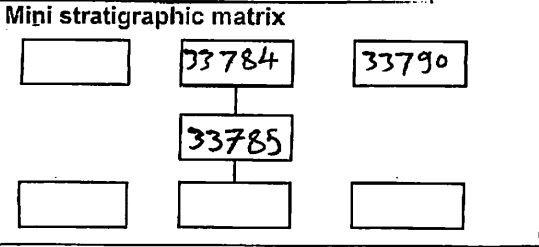


AREA: <b>KKT-N</b>	GRID SQUARE (S): <b>201D11</b> <b>201E11</b>	GRID CO-ORDINATES: <b>E</b> <b>N</b>	INITIALS & DATE: <b>HAHA AFAM</b> <b>22 ii 2012</b>	FEATURE No.: <b>33785</b>
-----------------------	--	--	---	------------------------------

FEATURE TYPE (For example wall, staircase, bench, foundation structure, platform etc.): <b>wall</b>	Full extent visible in plan: <b>(YES)</b> / NO
--	---

1. Dimensions (in metres)	Length: <b>6.20M</b>	Width: <b>0.70M</b>	Height: <b>0.10M</b>
2. Type of material(s) used	<b>Mud brick</b>		
3. Coursing (form of construction)	<b>Two courses</b>		
4. Orientation	<b>S-N</b>		
5. Associated collapse	---		
6. Cut & fill feature #'s	---		
7. Repaired?	---		
8. Associated floors	---		
9. Surface treatments? E.g. plaster, paint, mouldings	<b>(33798)</b>		
10. Size of one component	<b>0.40M Long by 0.20M width</b>		
11. Bonding material	<b>sandy silt</b>		
12. Excavated	Yes/No <b>Not Excavated</b>		



Abuts: **<33797> <33784>** Same as:

Abutted by: \_\_\_\_\_ Associated features: \_\_\_\_\_

Bonded into: \_\_\_\_\_

Contiguous with: \_\_\_\_\_

Discussion and interpretation:

wall <33785> is made of mud brick. it is orientated from N to S  
 This wall is Coated by plaster (33786). the wall is abuted by two walls  
 <33784> and <33790>. This wall is the eastern wall to space  
 (11323) and the western wall to space (11322) it consists of 2 courses  
 the eastern side is frecher and the western side is header.

Remember: do not just draw the architectural feature in isolation. Show how it relates to surrounding features and include details of surface treatments, repairs/modifications/damage, bonding material(s), and associated cuts. Annotate all aspects of the feature or use a Drawing Key. Measurements must be included for all aspects of the feature and surrounding features.

**Sketch Plan** - Include grid co-ordinates, North arrow, and elevations.

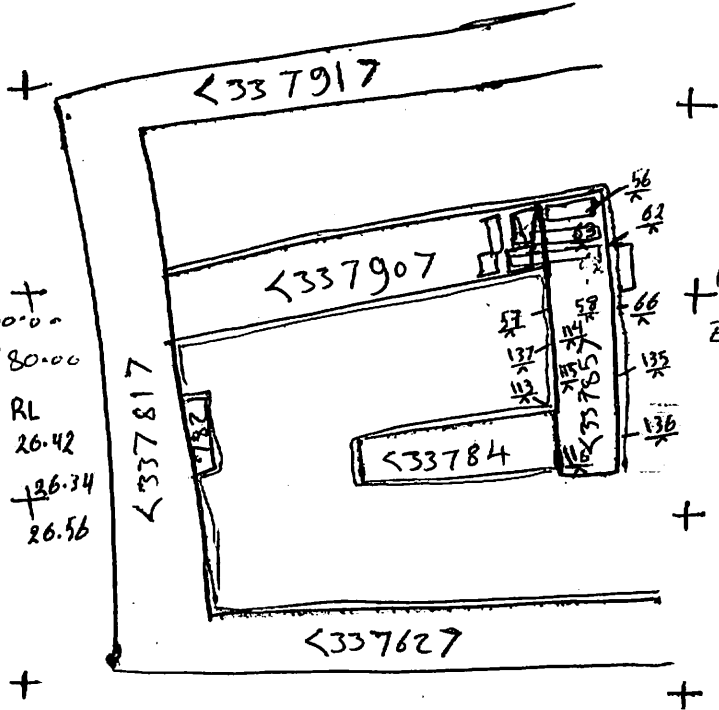


TBM: 26.47

B.S: 1.92

Loc: 28.39

	F.S	RL	
56	1.83	26.56	N: 93360.00
57	1.84	26.55	E: 500180.00
58	1.88	26.51	F.S RL
59	1.89	26.50	135 2.47 26.42
60	1.84	26.55	136 2.55 26.34
66	1.95	26.44	137 2.33 26.56
114	2.32	26.57	
115	2.51	26.38	
116	2.53	26.36	



N: 93360.00  
E: 500180.00

**Profile Sketch** - State direction the elevation of the feature being drawn is facing e.g. 'West Facing Elevation of Feature .... If feature was drawn in section then include the grid co-ordinates and elevations.

Drawing No.'s: 2012-4

Photo No.'s: 513110-513111-513114

Space No.: 11323

Structure No.: House A

Matrix Group:

Matrix Phase: 4b

Samples taken: