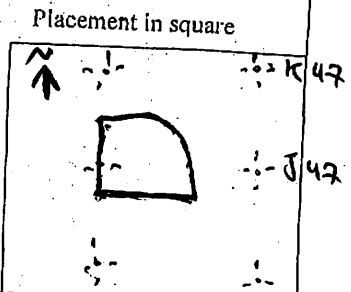


GIZA PLATEAU MAPPING PROJECT

Grid Square(s) S, K 47	Area kkt-E+	Context Type Deposit	Central Coords	Context 33847
DEPOSIT 1. Compaction 2. Colour 3. Composition/Particle Size (Over 10%) 4. Inclusions (Under 10%) occa / mod / freq 5. Thickness and extent 6. Top and bottom boundaries 7. Other comments 8. Method and conditions		1- Loose 2- Yellowish brown Yellowish 3- silty sand (40% silty, 60% sand) 4- very occa Pottery, charcoal, bone 5- (2.36)m NIS, (3.82m) EFW (0.10 m) thick 6- clear 7- — 8- Trowel - cloudy		CUT 1. Shape in plan 2. Corners 3. Dimension/Depth 4. Break of slope-top 5. Sides 6. Break of slope-base 7. Base 8. Orientation 9. Inclination of axis 10. Truncated (if known) 11. Fill #s 12. Other comments Draw profile overleaf
Type of feature:				
Stratigraphic Matrix				
This context is 33847				
33848				
Your interpretation:	Internal	External	Structural	Other (specify)
Your discussion: silty sand deposit mixed with eroded Limestone				
Context same as:			See contexts:	
Site Book Refs:			Matrix phase:	Initials and date AKOA 29/2/2012
Checked Interpretation:				
Provisional period		Group/Phase		Initials and date



Context Number 33847

GPMP 2012
kct - et

Ceramics 2012
(1663-1672)

Bag Numbers
Objects

Environmental Samples & Type 2012
W-5 (1669, 1670)

Exotics
Granit stone (7KG)

Charcoal 2012
(1671)

Bones 2012
(1668)

Other

Lithics

Photographs
2012 (104228, 104229)

Drawings

Plans
2012 (33847)

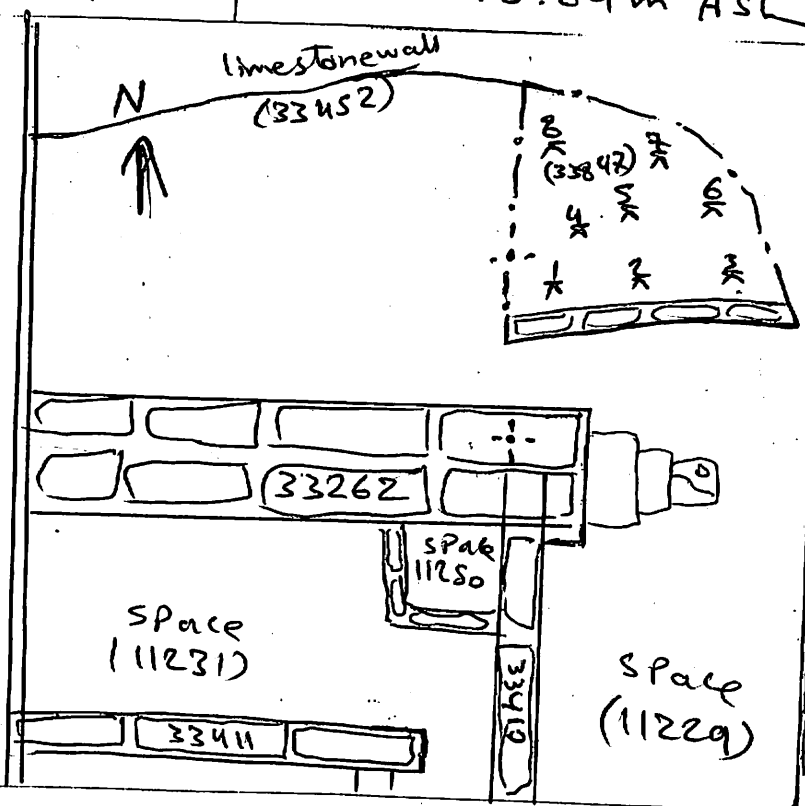
Sections

Top Elevation
16.02 m ASL

Bottom Elevations
15.84 m ASL

Sketch Plan

TBm	16.69
B.S	1.13
1.0.0	17.82
F.S	R.L
*	1.96 15.86
2	1.98 15.84
3	1.92 15.90
4	1.96 15.86
5	1.89 15.93
6	1.90 15.92
7	1.86 15.96
8	1.80 16.02



33847

3342

33262