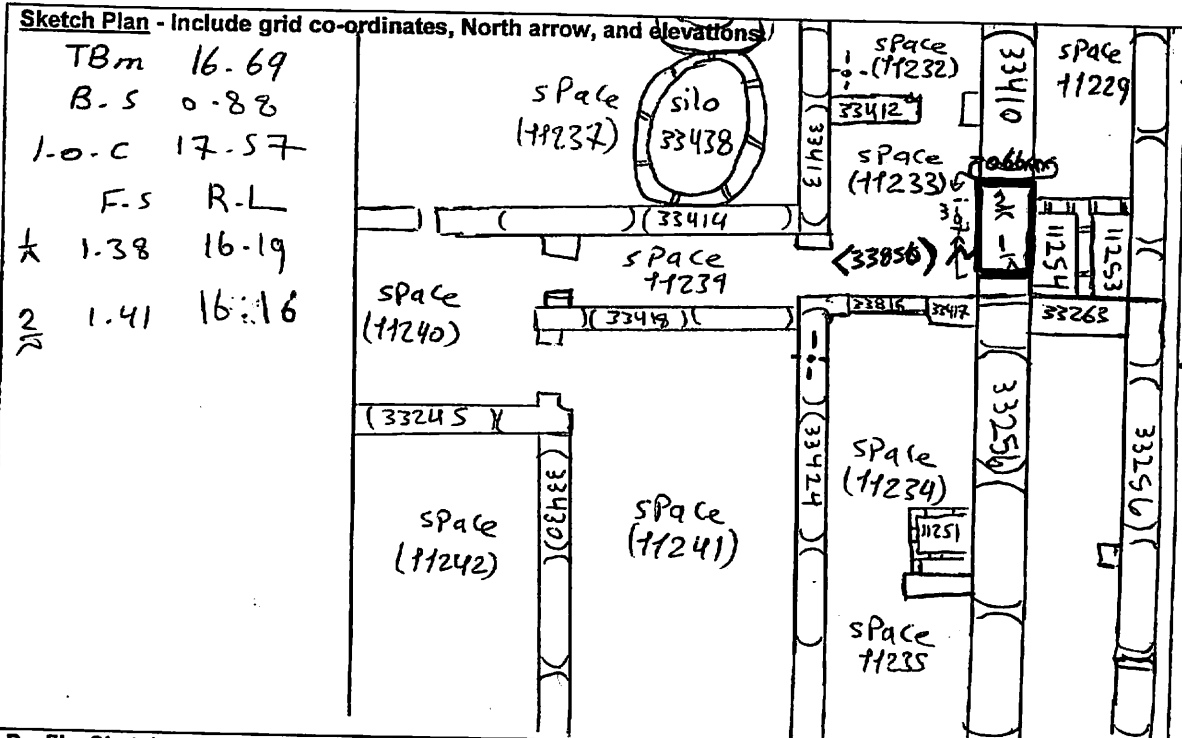


AREA: 144-E+	GRID SQUARE (S): H 47	GRID CO-ORDINATES: E N	INITIALS & DATE: AKOA 9 March 2012	FEATURE No.: 33856									
FEATURE TYPE (For example wall, staircase, bench, foundation structure, platform etc.):			Full extent visible in plan: YES / NO										
1. Dimensions (in metres)		Length: 1.07m	Width: 0.66m	Height: 0.59m									
2. Type of material(s) used													
3. Coursing (form of construction)													
4. Orientation north - south													
5. Associated collapse													
6. Cut & fill feature #'s													
7. Repaired?													
8. Associated floors													
9. Surface treatments? E.g. plaster, paint, mouldings													
10. Size of one component													
11. Bonding material													
12. Excavated		Yes/No											
Mini stratigraphic matrix <table border="1" style="width: 100%; text-align: center;"> <tr> <td style="width: 30%; height: 20px;"></td> <td style="width: 30%; height: 20px;">34018</td> <td style="width: 30%; height: 20px;"></td> </tr> <tr> <td></td> <td style="border-top: 1px solid black;">33856</td> <td></td> </tr> <tr> <td style="height: 20px;"></td> <td style="border-top: 1px solid black;">34041</td> <td style="border-top: 1px solid black;">33256</td> </tr> </table>				34018			33856			34041	33256	Abuts: Same as: Abutted by: Associated features: Bonded into: Contiguous with:	
	34018												
	33856												
	34041	33256											
Discussion and interpretation: north-south maml brick wall (33856), may be blocked the eastern entrance of space (11233), also it forms the western limit of space (11254)													

Remember: do not just draw the architectural feature in isolation. Show how it relates to surrounding features and include details of surface treatments, repairs/modifications/damage, bonding material(s), and associated cuts. Annotate all aspects of the feature or use a Drawing Key. Measurements must be included for all aspects of the feature and surrounding features.



Profile Sketch - State direction the elevation of the feature being drawn is facing e.g. 'West Facing Elevation of Feature If feature was drawn in section then include the grid co-ordinates and elevations.

Drawing No.'s:	Photo No.'s:
Space No.: 11253, 11254	Structure No.:
Matrix Group:	Matrix Phase:
Samples taken:	