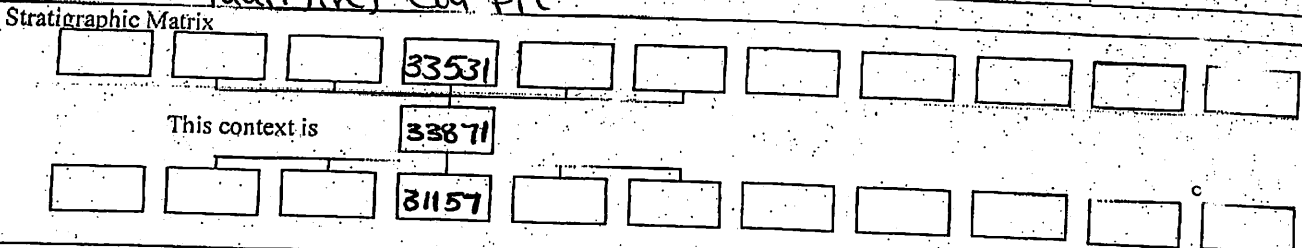


# GIZA PLATEAU MAPPING PROJECT

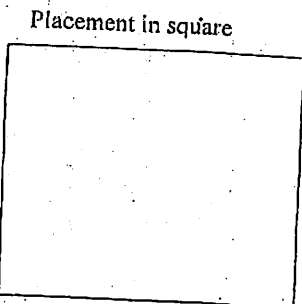
Grid Square(s) <b>201 B13, C13</b>	Area <b>KKT-N</b>	Context Type <b>Cut</b>	Central Coords	Context <b>33871</b>
DEPOSIT				
<ol style="list-style-type: none"> <li>1. Compaction</li> <li>2. Colour</li> <li>3. Composition/Particle Size (Over 10%)</li> <li>4. Inclusions (Under 10%) occa / mod / freq</li> <li>5. Thickness and extent</li> <li>6. Top and bottom boundaries</li> <li>7. Other comments</li> <li>8. Method and conditions</li> </ol>	1- Irregular			<ol style="list-style-type: none"> <li>1. Shape in plan</li> <li>2. Corners</li> <li>3. Dimension/Depth</li> <li>4. Break of slope-top</li> <li>5. Sides</li> <li>6. Break of slope-base</li> <li>7. Base</li> <li>8. Orientation</li> <li>9. Inclination of axis</li> <li>10. Truncated (if known)</li> <li>11. Fill #s</li> <li>12. Other comments Draw profile overleaf</li> </ol>
	2- Round			
	3- 0.65m NE/SW by 0.5m NW/SE by 2m			
	4- sharp to gradual			
	5- vertical to gradual			
	6- sharp to gradual			
	7- Flat			
	8- NE/SW			
	9- vertical			
	10- 31157			
	11- —			
	12- —			

Type of feature: **quarrying cut pit**



Your interpretation:      Internal      External      Structural      Other (specify)

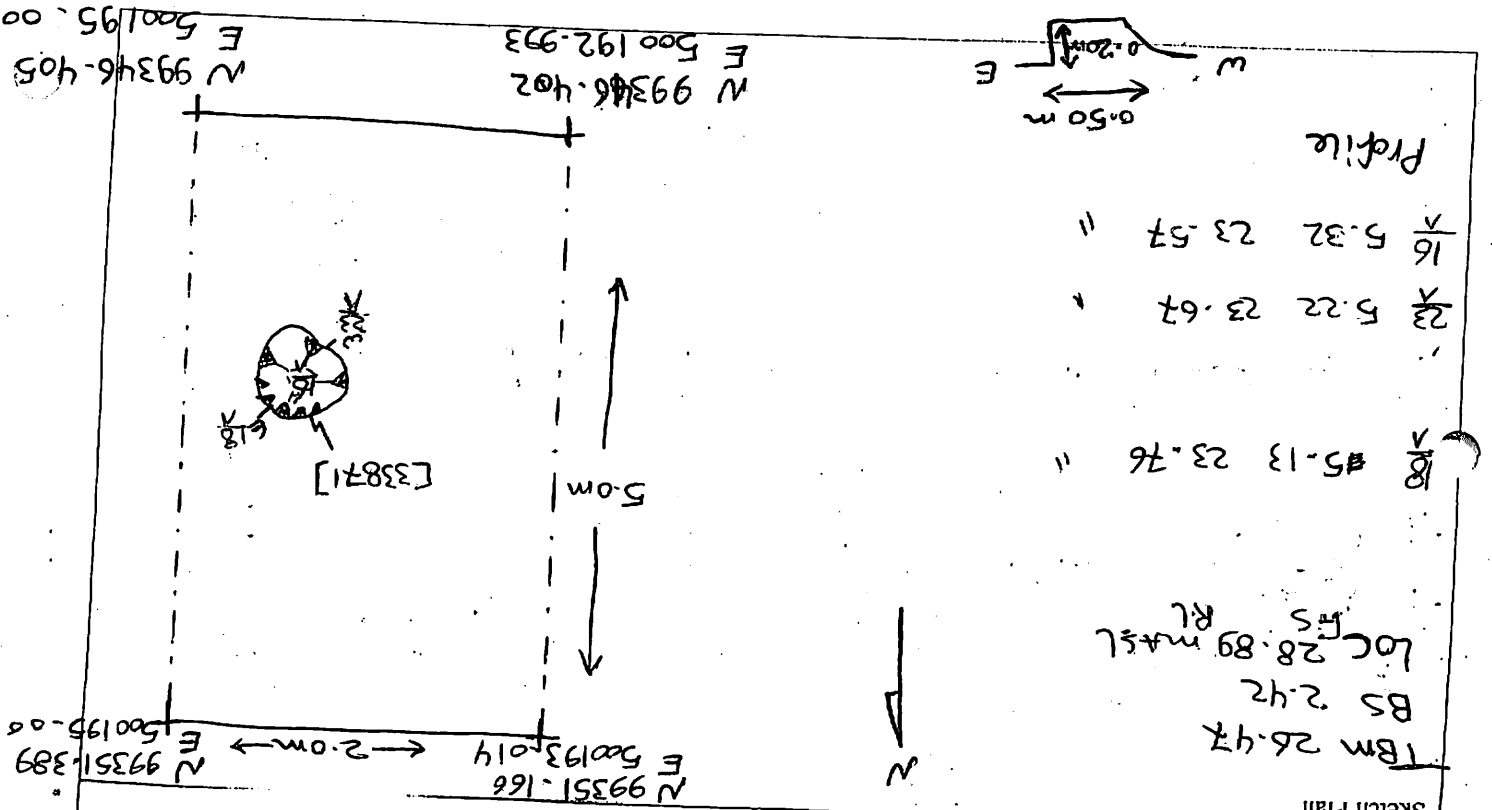
Your discussion:  
**quarrying cut during the earlier phase of quarrying**



Context same as:	See contexts:
Site Book Refs:	Matrix phase: <b>2</b>
Initials and date <b>EMS 3<sup>rd</sup> 2012</b>	

Checked Interpretation:

Provisional period	Group/Phase	Initials and date
--------------------	-------------	-------------------



Profile

1/16	5.32	23.57	"
2/23	5.22	23.67	"
3/18	5.13	23.76	"

BM 26.47  
 BS 2.42  
 Loc 28.89 mASL  
 RL

Context Number		33871
GPM 2012		
Bag Numbers		
Ceramics		
Objects		
Exotics		
Charcoal		
Bones		
Lithics		
Photographs	513193-513194-513196	
Plans		33871
Drawings		
Sections		
Top Elevation	23.76 mASL	
Bottom Elevations	23.57 mASL	
Sketch Plan		