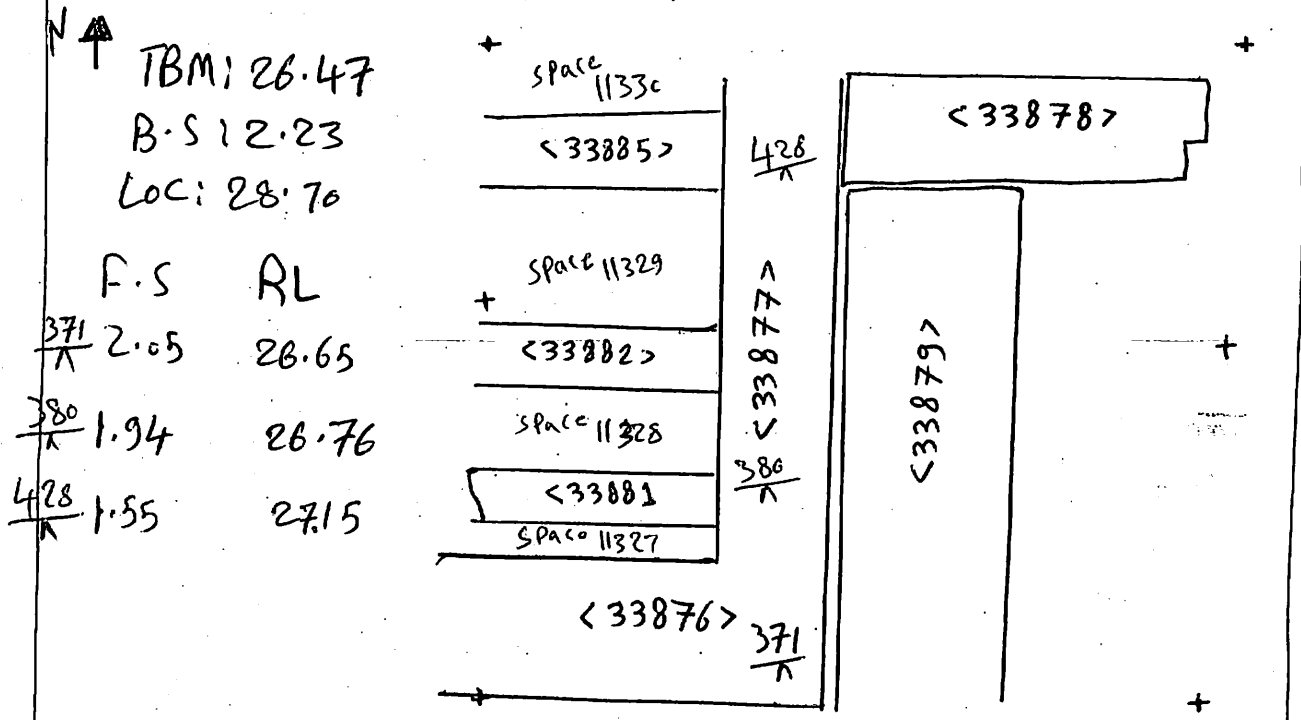


AREA: <b>KKT-N</b>	GRID SQUARE (S): 20 C10 20 D10 20 E10	GRID CO-ORDINATES: E N	INITIALS & DATE: <b>AFAM</b> <b>5 iii 2012</b>	FEATURE No.: <b>33877</b>
FEATURE TYPE (For example wall, staircase, bench, foundation structure, platform etc.): <b>wall</b>			Full extent visible in plan: <u>YES</u> / NO	
1. Dimensions (in metres)	Length: <b>14.60 m</b>	Width: <b>1.20 m</b>	Height: <b>0.05 m</b>	
2. Type of material(s) used	<b>mudbrick</b>			
3. Coursing (form of construction)	<b>3 courses</b>			
4. Orientation	<b>N-S</b>			
5. Associated collapse	—			
6. Cut & fill feature #'s	—			
7. Repaired?	—			
8. Associated floors	—			
9. Surface treatments? E.g. plaster, paint, mouldings	—			
10. Size of one component	<b>0.40 m x 0.18 m</b>			
11. Bonding material	<b>sandy silt</b>			
12. Excavated	Yes/No			
Mini stratigraphic matrix		Abuts: Same as:		
<div style="display: flex; justify-content: space-around; align-items: center;"> <div style="border: 1px solid black; padding: 2px; margin: 2px;">&lt;33885&gt;</div> <div style="border: 1px solid black; padding: 2px; margin: 2px;">&lt;33882&gt;</div> <div style="border: 1px solid black; padding: 2px; margin: 2px;">&lt;33881&gt;</div> <div style="border: 1px solid black; padding: 2px; margin: 2px;">&lt;33878&gt;</div> </div> <div style="display: flex; justify-content: center; align-items: center; margin: 5px 0;"> <div style="border: 1px solid black; padding: 2px; margin: 0 5px;">&lt;33877&gt;</div> </div> <div style="display: flex; justify-content: space-around; align-items: center; margin-top: 5px;"> <div style="border: 1px solid black; width: 40px; height: 20px; margin: 2px;"></div> <div style="border: 1px solid black; width: 40px; height: 20px; margin: 2px;"></div> <div style="border: 1px solid black; width: 40px; height: 20px; margin: 2px;"></div> </div>		Abutted by: <33885> <33882> <33881> <33878> Associated features:  Bonded into: <33876>  Contiguous with:		
Discussion and interpretation:				
<p>wall &lt;33877&gt; is North to south mud brick wall. The top of this wall consists of 3 courses the eastern side is header in the middle side is stretcher the western side is stretcher too. This wall is abuted by <del>the</del> Four walls, &lt;33885&gt;, &lt;33882&gt;, &lt;33881&gt; and &lt;33878&gt;. and bonded into &lt;33876&gt;</p>				

Remember: do not just draw the architectural feature in isolation. Show how it relates to surrounding features and include details of surface treatments, repairs/modifications/damage, bonding material(s), and associated cuts. Annotate all aspects of the feature or use a Drawing Key. Measurements must be included for all aspects of the feature and surrounding features.

Sketch Plan - Include grid co-ordinates, North arrow, and elevations.



Profile Sketch - State direction the elevation of the feature being drawn is facing e.g. 'West Facing Elevation of Feature .... If feature was drawn in section then include the grid co-ordinates and elevations.

Drawing No.'s: 2012-18

Photo No.'s: 513205

Space No.: 11326-11327-11328-11329-11330

Structure No.: magazines

Matrix Group:

Matrix Phase: 4B

Samples taken: