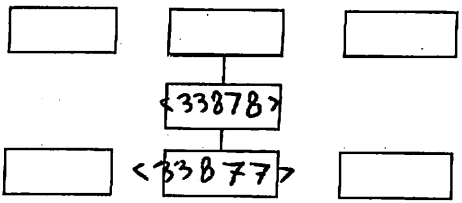
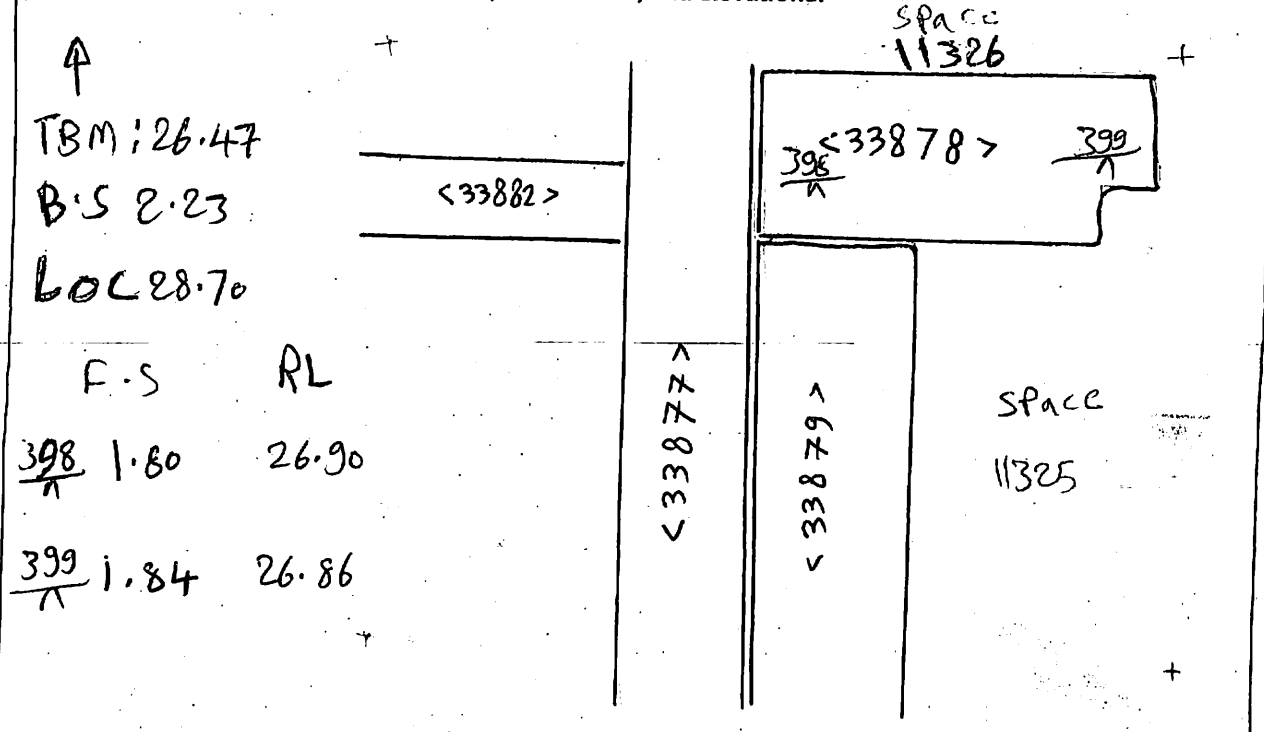


AREA: KKT.N	GRID SQUARE (S): E01 C10 E01 D10	GRID CO-ORDINATES: E N	INITIALS & DATE: AFAM 5 illi 2012	FEATURE No.: 33878
FEATURE TYPE (For example wall, staircase, bench, foundation structure, platform etc.): wall			Full extent visible in plan: <u>YES</u> / NO	
1. Dimensions (in metres)		Length: 1.34m	Width: 0.90 m	Height: 0.6m
2. Type of material(s) used		mudbrick		
3. Coursing (form of construction)		2 courses		
4. Orientation		E-W		
5. Associated collapse		-		
6. Cut & fill feature #'s		-		
7. Repaired?		-		
8. Associated floors		-		
9. Surface treatments? E.g. <u>plaster</u> , paint, mouldings		(33889)		
10. Size of one component		0.38m x 0.19m		
11. Bonding material		sandy silt		
12. Excavated		<u>Yes/No</u>		
Mini stratigraphic matrix 		Abuts: <33877> Same as: Abutted by: Associated features: Bonded into: Contiguous with:		
Discussion and interpretation: <p><33878> is mud brick wall. East to west orientated. The top of this wall consists of 2 courses the northern side is header the southern side is header too. this wall is abuts wall <33877>.</p>				

Remember: do not just draw the architectural feature in isolation. Show how it relates to surrounding features and include details of surface treatments, repairs/modifications/damage, bonding material(s), and associated cuts. Annotate all aspects of the feature or use a Drawing Key. Measurements must be included for all aspects of the feature and surrounding features.

Sketch Plan - Include grid co-ordinates, North arrow, and elevations.



Profile Sketch - State direction the elevation of the feature being drawn is facing e.g. 'West Facing Elevation of Feature If feature was drawn in section then include the grid co-ordinates and elevations.

Drawing No.'s: 2012-18	Photo No.'s: 513218-513219
Space No.: 11325-11326	Structure No.: magazines
Matrix Group:	Matrix Phase: 4B
Samples taken:	