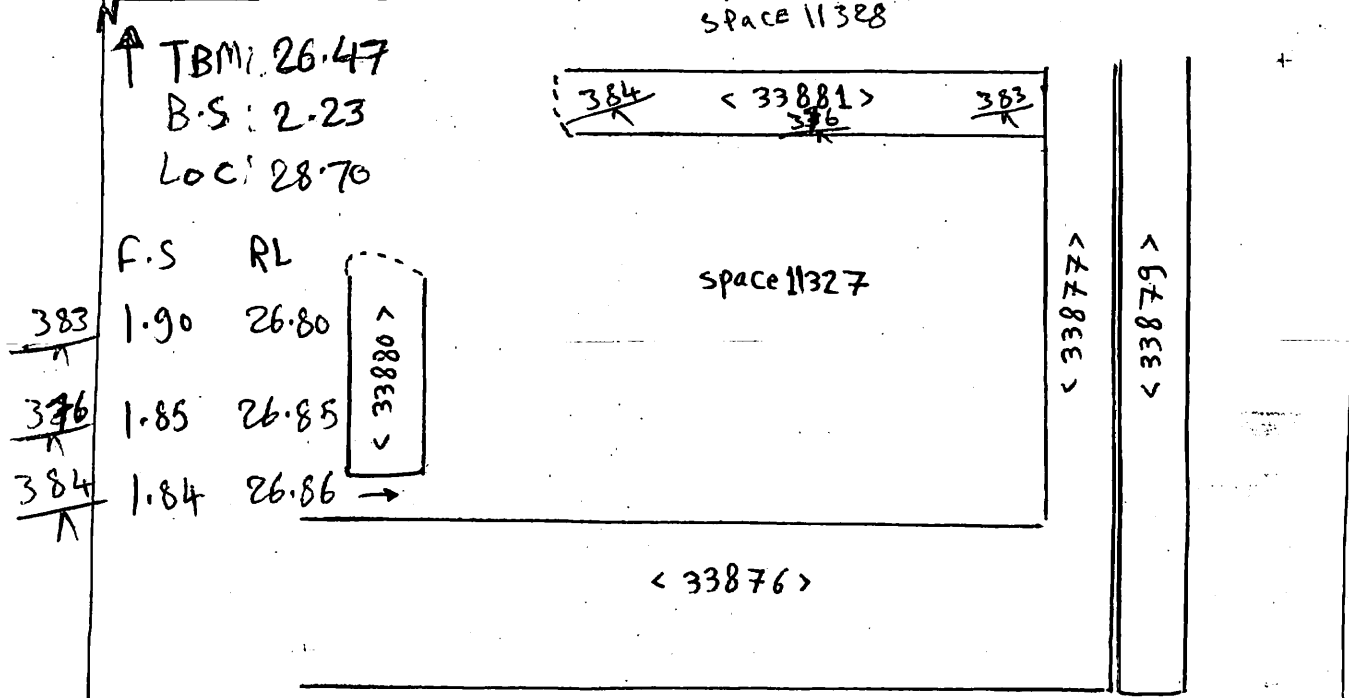


AREA: KKT.N	GRID SQUARE (S): 201C10	GRID CO-ORDINATES: E N	INITIALS & DATE: AFAM 5 iii 2012	FEATURE No.: 33881
FEATURE TYPE (For example wall, staircase, bench, foundation structure, platform etc.): wall			Full extent visible in plan: YES / NO	
1. Dimensions (in metres)	Length: 1.90 m	Width: 0.90 m	Height: 0.03	
2. Type of material(s) used	mudbrick			
3. Coursing (form of construction)	2 courses			
4. Orientation	E-W			
5. Associated collapse	-			
6. Cut & fill feature #'s	-			
7. Repaired?	-			
8. Associated floors	-			
9. Surface treatments? E.g. plaster, paint, mouldings	-			
10. Size of one component	0.40 m x 0.19 m			
11. Bonding material	sandy silt			
12. Excavated	Yes/No			
Mini stratigraphic matrix		Abuts: <33877>      Same as:		
<pre> graph TD     A[ ] --- B[33881]     B --- C[33877]     B --- D[ ]     B --- E[ ]     B --- F[ ]     </pre>		Abutted by:      Associated features:		
		Bonded into:		
		Contiguous with:		
Discussion and interpretation:				
<p>wall &lt;33881&gt; is E to W mudbrick wall. The top of this wall consists of two courses. The northern and the southern side is header. The wall abuts wall &lt;33877&gt;.</p>				

Remember: do not just draw the architectural feature in isolation. Show how it relates to surrounding features and include details of surface treatments, repairs/modifications/damage, bonding material(s), and associated cuts. Annotate all aspects of the feature or use a Drawing Key. Measurements must be included for all aspects of the feature and surrounding features.

Sketch Plan - Include grid co-ordinates, North arrow, and elevations.



Profile Sketch - State direction the elevation of the feature being drawn is facing e.g. 'West Facing Elevation of Feature .... If feature was drawn in section then include the grid co-ordinates and elevations.

Drawing No.'s: 2012-18	Photo No.'s: 513209 - 513210
Space No.: 11327 - 11328	Structure No.: magazines
Matrix Group:	Matrix Phase: 4B
Samples taken:	