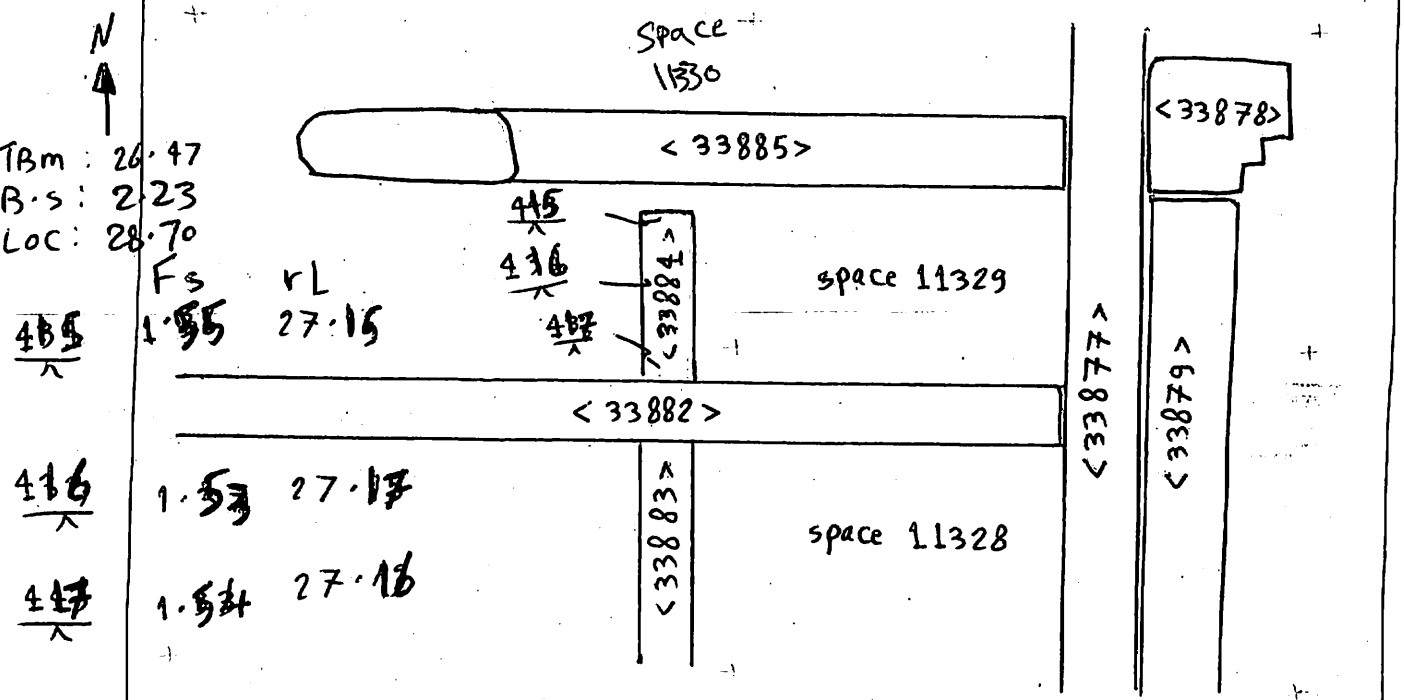


AREA: KKT-N	GRID SQUARE (S): 201 D9 204 E9	GRID CO-ORDINATES: E N	INITIALS & DATE: AFAM 4 iii 2012	FEATURE No.: 33884
FEATURE TYPE (For example wall, staircase, bench, foundation structure, platform etc.): wall			Full extent visible in plan: YES / NO	
1. Dimensions (in metres)	Length: 2.78 m	Width: 0.80 m	Height:	
2. Type of material(s) used	mud brick			
3. Coursing (form of construction)	2 courses			
4. Orientation	N-S			
5. Associated collapse	-			
6. Cut & fill feature #'s	-			
7. Repaired?	-			
8. Associated floors	-			
9. Surface treatments? E.g. plaster, paint, mouldings	-			
10. Size of one component	0.38 m x 0.20 m			
11. Bonding material	sandy silt			
12. Excavated	Yes/No			
Mini stratigraphic matrix 		Abuts: <33882> Same as: Abutted by: Associated features: Bonded into: Contiguous with:		
Discussion and interpretation: wall <33884> is North to south orientated made of mud brick. The Top of this wall consists of 2 courses The eastern side strecher the western side is header. This wall abuts wall <33882> . and this wall is the western wall to space 11329 .				

Remember: do not just draw the architectural feature in isolation. Show how it relates to surrounding features and include details of surface treatments, repairs/modifications/damage, bonding material(s), and associated cuts. Annotate all aspects of the feature or use a Drawing Key. Measurements must be included for all aspects of the feature and surrounding features.

Sketch Plan - Include grid co-ordinates, North arrow, and elevations.



Profile Sketch - State direction the elevation of the feature being drawn is facing e.g. 'West Facing Elevation of Feature If feature was drawn in section then include the grid co-ordinates and elevations.

Drawing No.'s: 2012-18	Photo No.'s: 513220 - 513221
Space No.: 11329	Structure No.: magazines
Matrix Group:	Matrix Phase: 4b
Samples taken:	