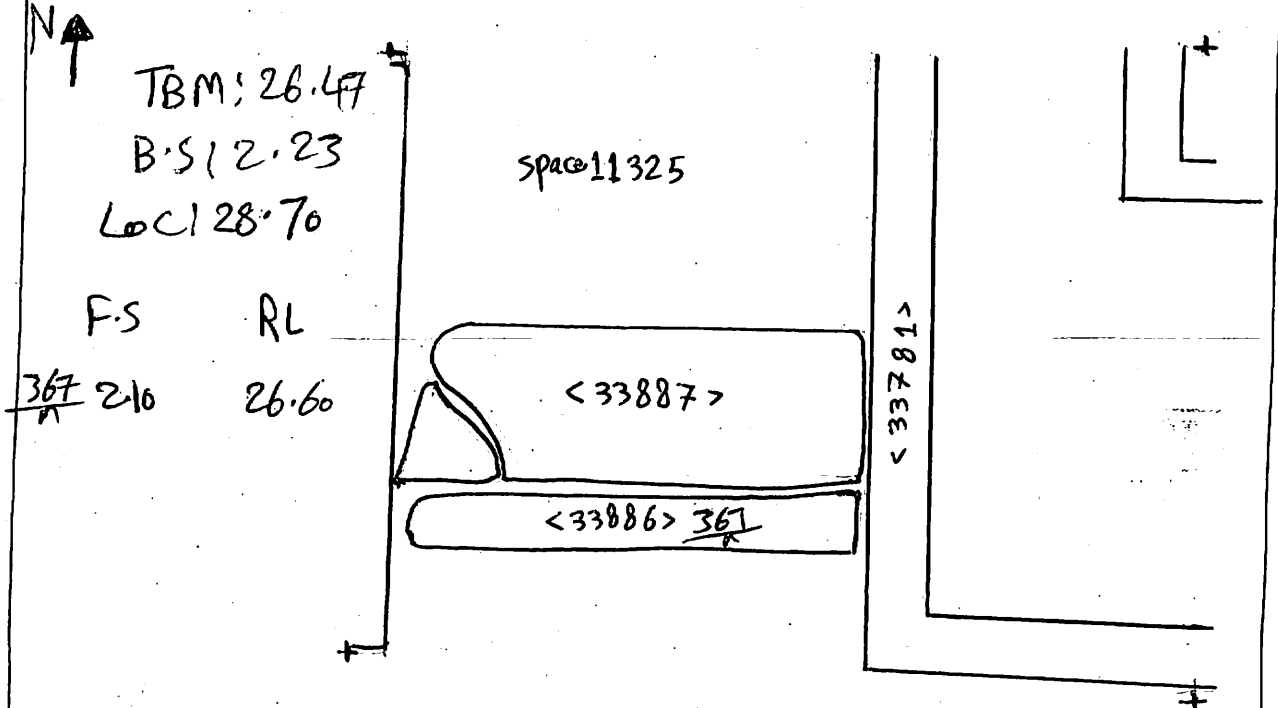


AREA: KKT-N	GRID SQUARE (S): 201C11	GRID CO-ORDINATES: E N	INITIALS & DATE: AFAM 5 iii 2012	FEATURE No.: 33886
FEATURE TYPE (For example wall, staircase, bench, foundation structure, platform etc.): Threshold			Full extent visible in plan: <u>YES</u> / NO	
1. Dimensions (in metres)	Length: 1.23	Width: 0.22	Height: 0.25	
2. Type of material(s) used	Limestone			
3. Coursing (form of construction)	-			
4. Orientation	E to W			
5. Associated collapse	-			
6. Cut & fill feature #'s	-			
7. Repaired?	-			
8. Associated floors	-			
9. Surface treatments? E.g. plaster, paint, mouldings	-			
10. Size of one component	-			
11. Bonding material	-			
12. Excavated	<u>Yes/No</u>			
Mini stratigraphic matrix		Abuts: Same as:		
<pre> graph TD A[] --- B[] A --- C[] B --- D[<33886>] C --- D D --- E[] D --- F[] </pre>		Abutted by: Associated features:		
		Bonded into:		
		Contiguous with:		
Discussion and interpretation:				
<p><33886> a threshold to space .11325 . it is East to west orientated This Threshold not in its original place .</p>				

Remember: do not just draw the architectural feature in isolation. Show how it relates to surrounding features and include details of surface treatments, repairs/modifications/damage, bonding material(s), and associated cuts. Annotate all aspects of the feature or use a Drawing Key. Measurements must be included for all aspects of the feature and surrounding features.

Sketch Plan - Include grid co-ordinates, North arrow, and elevations.



Profile Sketch - State direction the elevation of the feature being drawn is facing e.g. 'West Facing Elevation of Feature If feature was drawn in section then include the grid co-ordinates and elevations.

Drawing No.'s: 2012-18	Photo No.'s: 513203- 513225
Space No.: 11325	Structure No.: magazines
Matrix Group:	Matrix Phase: 1st
Samples taken:	