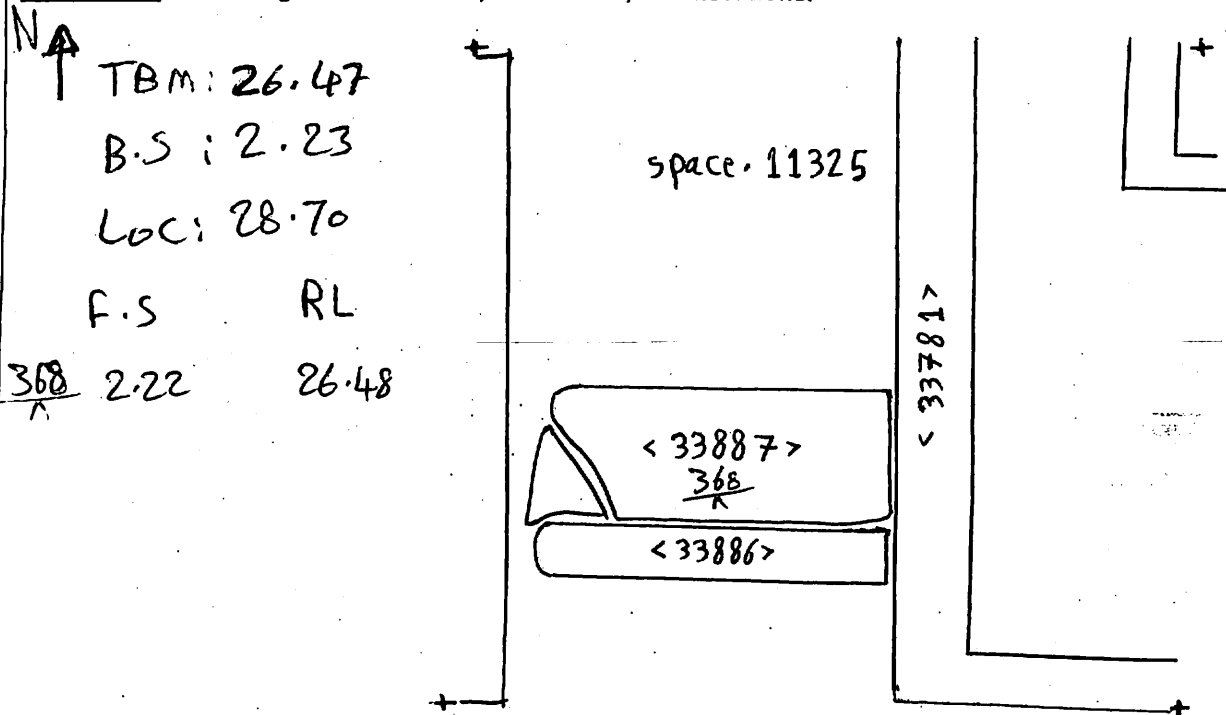


AREA: KKT-N	GRID SQUARE (S): 20C11	GRID CO-ORDINATES: E N	INITIALS & DATE: AFAM 5 iii 2012	FEATURE No.: 33887
FEATURE TYPE (For example wall, staircase, bench, foundation structure, platform etc.): threshold			Full extent visible in plan: <u>YES</u> / NO	
1. Dimensions (in metres)	Length: 1.45 m	Width: 0.70 m	Height: 0.10 m	
2. Type of material(s) used	Lime stone			
3. Coursing (form of construction)				
4. Orientation	E - W			
5. Associated collapse				
6. Cut & fill feature #'s				
7. Repaired?				
8. Associated floors				
9. Surface treatments? E.g. plaster, paint, mouldings				
10. Size of one component				
11. Bonding material				
12. Excavated	<u>Yes/No</u>			
Mini stratigraphic matrix 		Abuts: <u>Same as:</u> Abutted by: <u>Associated features:</u> Bonded into: Contiguous with:		
Discussion and interpretation: <p><33887> is a lime stone treshold, East to west orientated This treshold lead us to space 11325 it measures 1.45m lenght and 0.70m width.</p>				

Remember: do not just draw the architectural feature in isolation. Show how it relates to surrounding features and include details of surface treatments, repairs/modifications/damage, bonding material(s), and associated cuts. Annotate all aspects of the feature or use a Drawing Key. Measurements must be included for all aspects of the feature and surrounding features.

Sketch Plan - Include grid co-ordinates, North arrow, and elevations.



Profile Sketch - State direction the elevation of the feature being drawn is facing e.g. 'West Facing Elevation of Feature If feature was drawn in section then include the grid co-ordinates and elevations.

Drawing No.'s: 2012-18	Photo No.'s: 513203 - 513225
Space No.: 11325 - 11377	Structure No.: Maggazin
Matrix Group:	Matrix Phase: 6
Samples taken:	