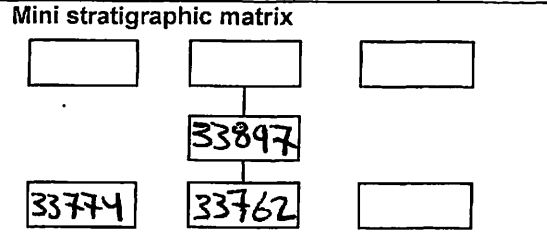


AREA: KRT-W	GRID SQUARE (S): 201 C12	GRID CO-ORDINATES: E N	INITIALS & DATE: SAER 5 III 2012	FEATURE No.: 33897
-----------------------	------------------------------------	------------------------------	--	------------------------------

FEATURE TYPE (For example wall, staircase, <u>bench</u> foundation structure, platform etc.): possible bench	Full extent visible in plan: <input checked="" type="radio"/> YES / NO
--	---

1. Dimensions (in metres)	Length: 0.58 m	Width: 0.27 m	Height: 0.10 m
2. Type of material(s) used	mud brick		
3. Coursing (form of construction)	two courses		
4. Orientation	E-W		
5. Associated collapse	-		
6. Cut & fill feature #'s	-		
7. Repaired?	-		
8. Associated floors	-		
9. Surface treatments? E.g. plaster, paint, mouldings	-		
10. Size of one component	0.42m X 0.12m		
11. Bonding material	sandy silt		
12. Excavated	Yes <input checked="" type="radio"/> No <input type="radio"/> Not excavated		



Abuts: **<33762> <33774>** Same as:

Abutted by: Associated features:

Bonded into:

Contiguous with:

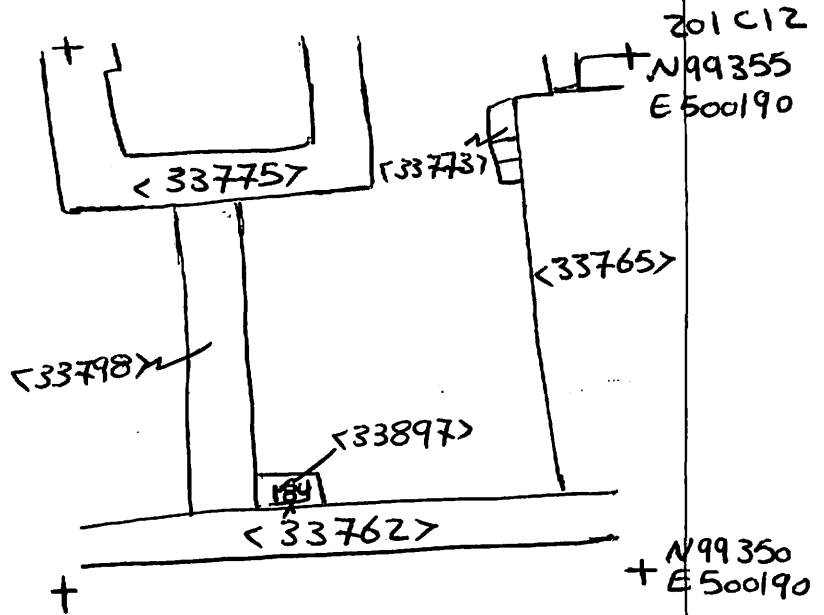
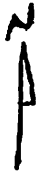
Discussion and interpretation:

E-W mud brick bench located in space 11318. it consists of two courses one stretcher and one header in plan.

Remember: do not just draw the architectural feature in isolation. Show how it relates to surrounding features and include details of surface treatments, repairs/modifications/damage, bonding material(s), and associated cuts. Annotate all aspects of the feature or use a Drawing Key. Measurements must be included for all aspects of the feature and surrounding features.

Sketch Plan - Include grid co-ordinates, North arrow, and elevations.

TBm 26.47 mASL
 BS 1.92
 LOC 28.39 mASL
 * Fs RL
 184 2.49 25.90 mASL



Profile Sketch - State direction the elevation of the feature being drawn is facing e.g. 'West Facing Elevation of Feature If feature was drawn in section then include the grid co-ordinates and elevations.

Drawing No.'s: 2012-4	Photo No.'s: 513116 - 513111
Space No.: 11318	Structure No.: house(A)
Matrix Group:	Matrix Phase: 4b
Samples taken:	