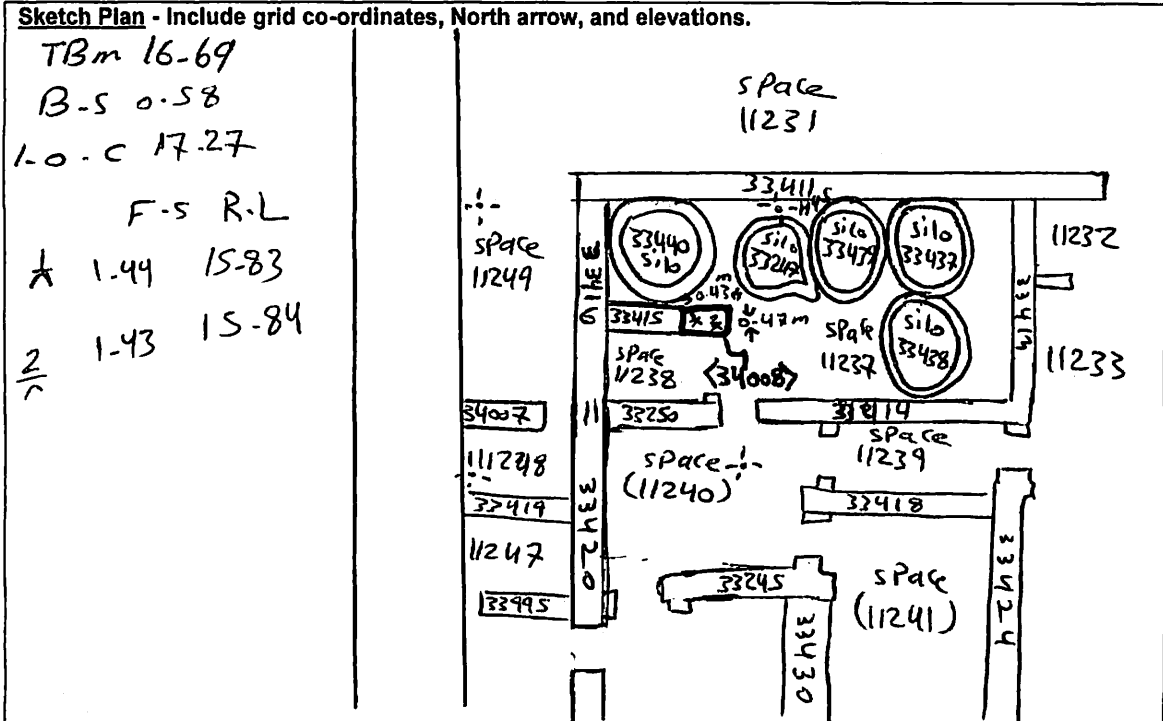


AREA: kdt-ε+	GRID SQUARE (S): H45	GRID CO-ORDINATES: E N	INITIALS & DATE: AKOA 10 March 2012	FEATURE No.: 34008									
FEATURE TYPE (For example (wal) staircase, bench, foundation structure, platform etc.):			Full extent visible in plan: YES / NO										
1. Dimensions (in metres)	Length: 0.47 m	Width: 0.43 m	Height: 0.15 m										
2. Type of material(s) used													
3. Coursing (form of construction)													
4. Orientation	North-South												
5. Associated collapse													
6. Cut & fill feature #'s													
7. Repaired?													
8. Associated floors													
9. Surface treatments? E.g. plaster, paint, mouldings													
10. Size of one component													
11. Bonding material													
12. Excavated	Yes/No												
Mini stratigraphic matrix <table border="0" style="width: 100%;"> <tr> <td style="border: 1px solid black; width: 20px; height: 20px;"></td> <td style="border: 1px solid black; width: 40px; height: 20px; text-align: center;">33458</td> <td style="border: 1px solid black; width: 20px; height: 20px;"></td> </tr> <tr> <td></td> <td style="border: 1px solid black; width: 40px; height: 20px; text-align: center;">34008</td> <td></td> </tr> <tr> <td style="border: 1px solid black; width: 20px; height: 20px;"></td> <td style="border: 1px solid black; width: 40px; height: 20px; text-align: center;">NFE</td> <td style="border: 1px solid black; width: 20px; height: 20px;"></td> </tr> </table>			33458			34008			NFE		Abuts: 33458 Same as: Abutted by: Associated features: Bonded into: Contiguous with:		
	33458												
	34008												
	NFE												
Discussion and interpretation: small sub-squared Marl brick wall (34008), may be it was higher when it was using with the southern silo (33440).													

Remember: do not just draw the architectural feature in isolation. Show how it relates to surrounding features and include details of surface treatments, repairs/modifications/damage, bonding material(s), and associated cuts. Annotate all aspects of the feature or use a Drawing Key. Measurements must be included for all aspects of the feature and surrounding features.



Profile Sketch - State direction the elevation of the feature being drawn is facing e.g. 'West Facing Elevation of Feature If feature was drawn in section then include the grid co-ordinates and elevations.

Drawing No.'s:	Photo No.'s:
Space No.: (11237), (11238)	Structure No.:
Matrix Group:	Matrix Phase:
Samples taken:	