

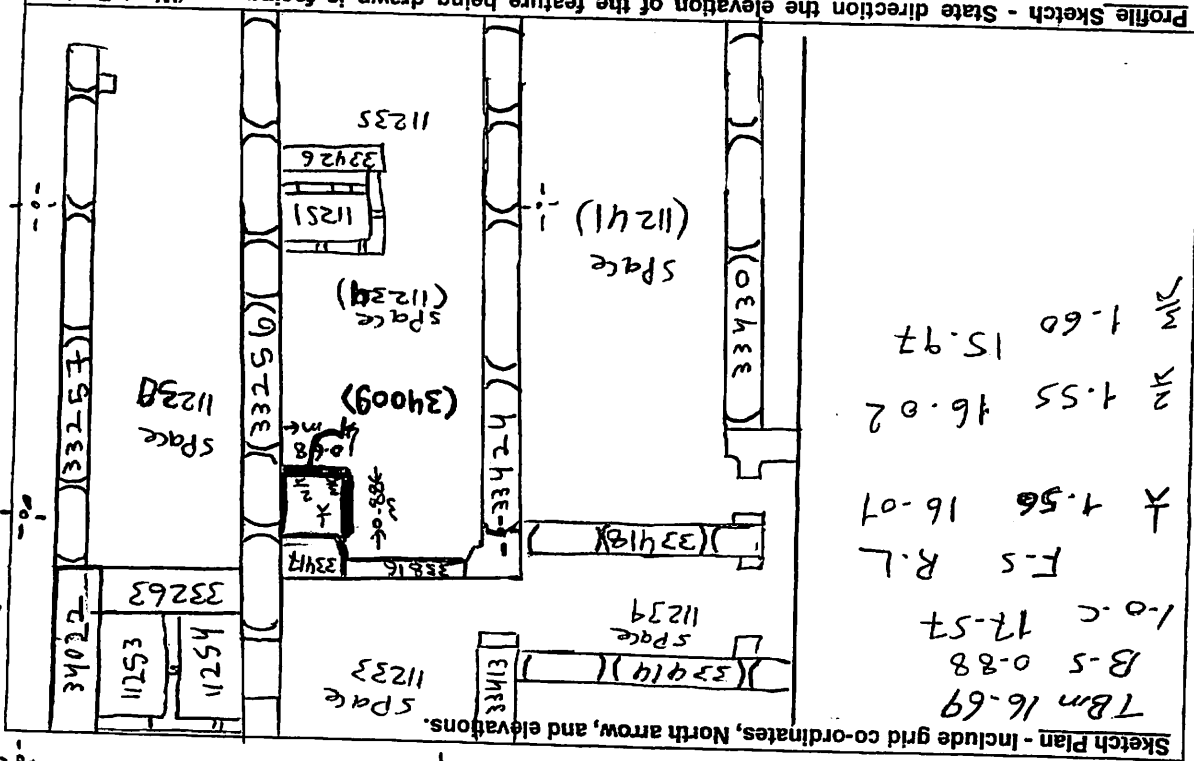
AREA: KKT-E+	GRID SQUARE (S): G1/M4Z	GRID CO-ORDINATES: E N	INITIALS & DATE: AKOA 10 March 2012	FEATURE No.: 34009
FEATURE TYPE (For example wall, staircase, bench, foundation structure (platform) etc.):			Full extent visible in plan: YES / NO	
1. Dimensions (in metres)	Length: 0.88m	Width: 0.68m	Height: 0.20m	
2. Type of material(s) used				
3. Coursing (form of construction)				
4. Orientation	North - South			
5. Associated collapse				
6. Cut & fill feature #'s				
7. Repaired?				
8. Associated floors				
9. Surface treatments? E.g. plaster, paint, mouldings				
10. Size of one component				
11. Bonding material				
12. Excavated	Yes/No			
Mini stratigraphic matrix		Abuts (33256) (33417) Same as:		
<input type="checkbox"/>	33260	<input type="checkbox"/>	Abutted by: Associated features:	
	34009		Bonded into:	
<input type="checkbox"/>	33417	33256	Contiguous with:	
Discussion and interpretation:				
<p>rectangular mark brick platform (34009), in the eastern north of space (11234), may be used for keeping something, also may be after this space (11234) blocked with mark brick wall (34017) used as step forming the new entrance of that space (11234)</p>				

ARCHITECTURE RECORDING FORM

GPMP 2012

Remember: do not just draw the architectural feature in isolation. Show how it relates to surrounding features and include details of surface treatments, repairs/modifications/damage, bonding material(s), and associated cuts. Annotate all aspects of the feature or use a Drawing Key. Measurements must be included for all aspects of the feature and surrounding features.

447



Profile Sketch - State direction the elevation of the feature being drawn is facing e.g. 'West Facing Elevation of Feature If feature was drawn in section then include the grid co-ordinates and elevations.

Drawing No.'s:	Photo No.'s:
Space No.: 11234	Structure No.:
Matrix Group:	Matrix Phase:
Samples taken:	