

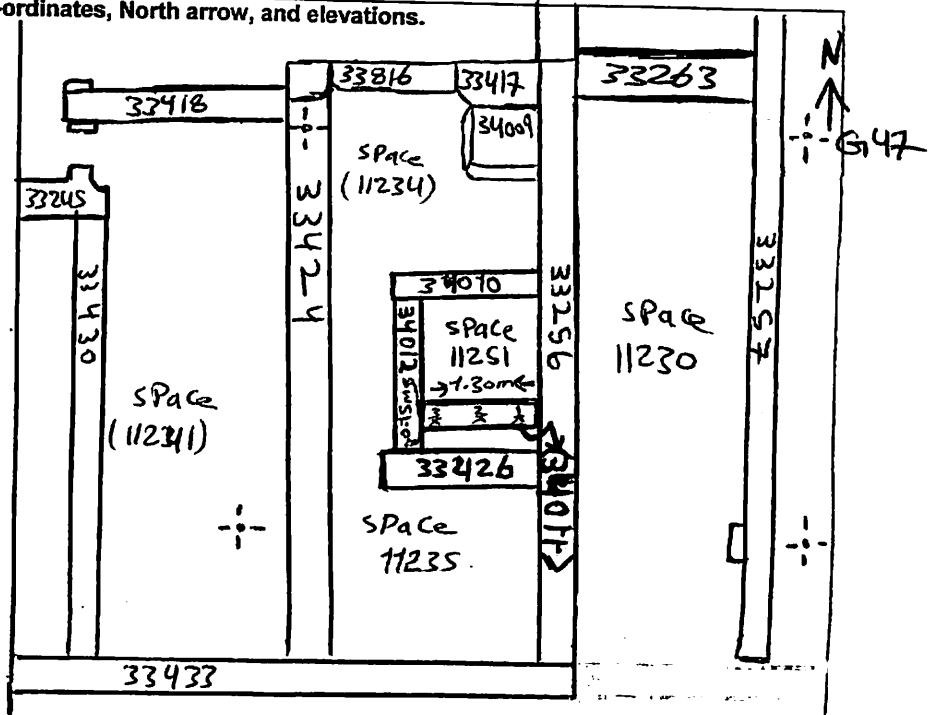
AREA: 14d E+	GRID SQUARE (S): G147	GRID CO-ORDINATES: E N	INITIALS & DATE: AKOA 10 March 2012	FEATURE No.: 34011									
FEATURE TYPE (For example wall, staircase, bench, foundation structure, platform etc.):			Full extent visible in plan: YES / NO										
1. Dimensions (in metres)	Length: 1.30m	Width: 0.15m	Height: 0.19m										
2. Type of material(s) used													
3. Coursing (form of construction)													
4. Orientation	East-west												
5. Associated collapse													
6. Cut & fill feature #'s													
7. Repaired?													
8. Associated floors													
9. Surface treatments? E.g. plaster, paint, mouldings													
10. Size of one component													
11. Bonding material													
12. Excavated	Yes/No												
Mini stratigraphic matrix <table border="1" style="width: 100%; text-align: center;"> <tr> <td style="width: 20%; height: 20px;"></td> <td style="width: 20%; height: 20px;">34024</td> <td style="width: 20%; height: 20px;"></td> </tr> <tr> <td></td> <td style="border-top: 1px solid black; height: 20px;">34011</td> <td></td> </tr> <tr> <td style="border-top: 1px solid black; height: 20px;"></td> <td style="border-top: 1px solid black; height: 20px;">33426</td> <td style="border-top: 1px solid black; height: 20px;">33256</td> </tr> </table>			34024			34011			33426	33256	Abuts: 33256-34012      Same as: Abutted by:                      Associated features: Bonded into: Contiguous with:		
	34024												
	34011												
	33426	33256											
Discussion and interpretation:  East-west tiny mark brick wall (34011). forms the southern limit of (11250)													

Remember: do not just draw the architectural feature in isolation. Show how it relates to surrounding features and include details of surface treatments, repairs/modifications/damage, bonding material(s), and associated cuts. Annotate all aspects of the feature or use a Drawing Key. Measurements must be included for all aspects of the feature and surrounding features.

**Sketch Plan** - Include grid co-ordinates, North arrow, and elevations.

TBM 16-69  
 B.S 0-82  
 I.O.C 17.51

	F.S	R.L
1	1.69	15-82
2	1.68	15-83
3	1.68	15-83



**Profile Sketch** - State direction the elevation of the feature being drawn is facing e.g. 'West Facing Elevation of Feature .... If feature was drawn in section then include the grid co-ordinates and elevations.

Drawing No.'s:	Photo No.'s:
Space No.: 11251	Structure No.:
Matrix Group:	Matrix Phase:
Samples taken:	