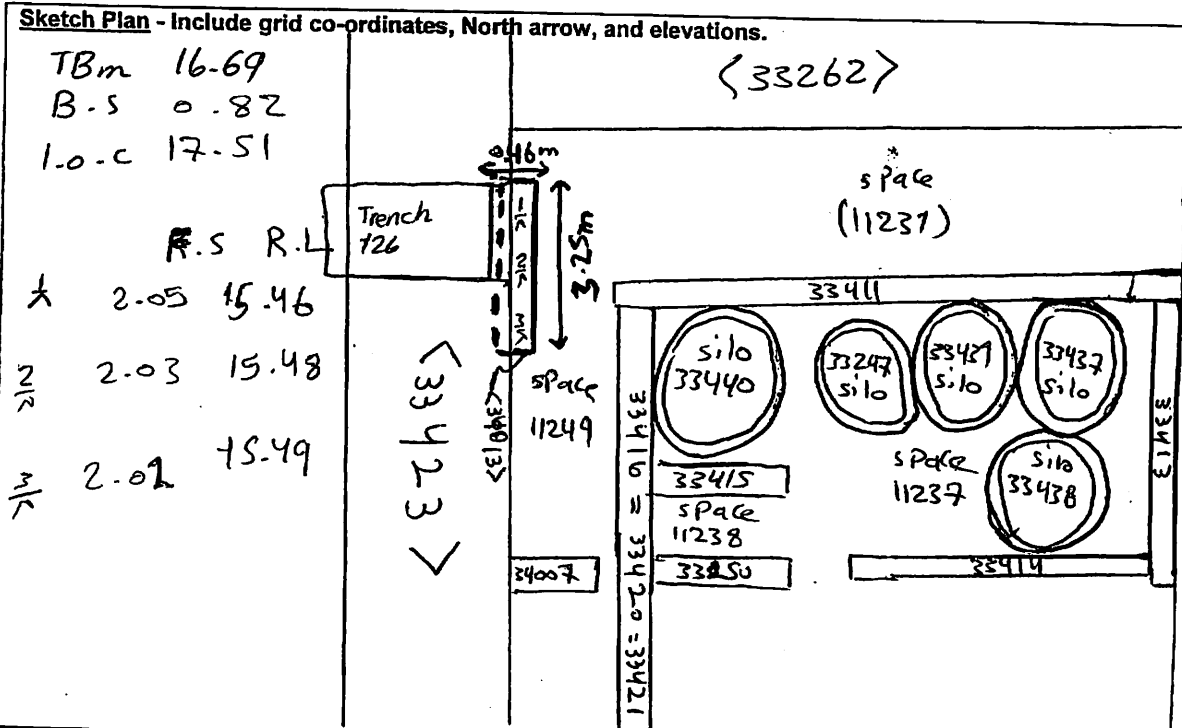


AREA: <i>ckt-ct</i>	GRID SQUARE (S): <i>E 44</i>	GRID CO-ORDINATES: E N	INITIALS & DATE: <i>AkoA</i> <i>11 March 2012</i>	FEATURE No.: <i>34013</i>
FEATURE TYPE (For example wall, staircase, bench, foundation structure, platform etc.):			Full extent visible in plan: YES / NO	
1. Dimensions (in metres)	Length: <i>3.25 m</i>	Width: <i>0.46 m</i>	Height: <i>0.78 m</i>	
2. Type of material(s) used				
3. Coursing (form of construction)				
4. Orientation	<i>North - South</i>			
5. Associated collapse				
6. Cut & fill feature #'s				
7. Repaired?				
8. Associated floors				
9. Surface treatments? E.g. plaster, paint, mouldings				
10. Size of one component				
11. Bonding material				
12. Excavated	Yes/No			
Mini stratigraphic matrix		Abuts: Same as:		
<input type="checkbox"/>	<input type="checkbox"/> <i>33423</i> <input type="checkbox"/>	Abutted by: Associated features:		
	<input type="checkbox"/> <i>34013</i> <input type="checkbox"/>	Bonded into:		
<input type="checkbox"/>	<input type="checkbox"/> <i>NFE</i> <input type="checkbox"/>	Contiguous with:		
Discussion and interpretation:				
<i>North - South main brick wall (34013), may be oldest wall until now</i>				

Remember: do not just draw the architectural feature in isolation. Show how it relates to surrounding features and include details of surface treatments, repairs/modifications/damage, bonding material(s), and associated cuts. Annotate all aspects of the feature or use a Drawing Key. Measurements must be included for all aspects of the feature and surrounding features.



**Profile Sketch** - State direction the elevation of the feature being drawn is facing e.g. 'West Facing Elevation of Feature .... If feature was drawn in section then include the grid co-ordinates and elevations.

Drawing No.'s:	Photo No.'s:
Space No.: 11231, 11249	Structure No.:
Matrix Group:	Matrix Phase:
Samples taken:	