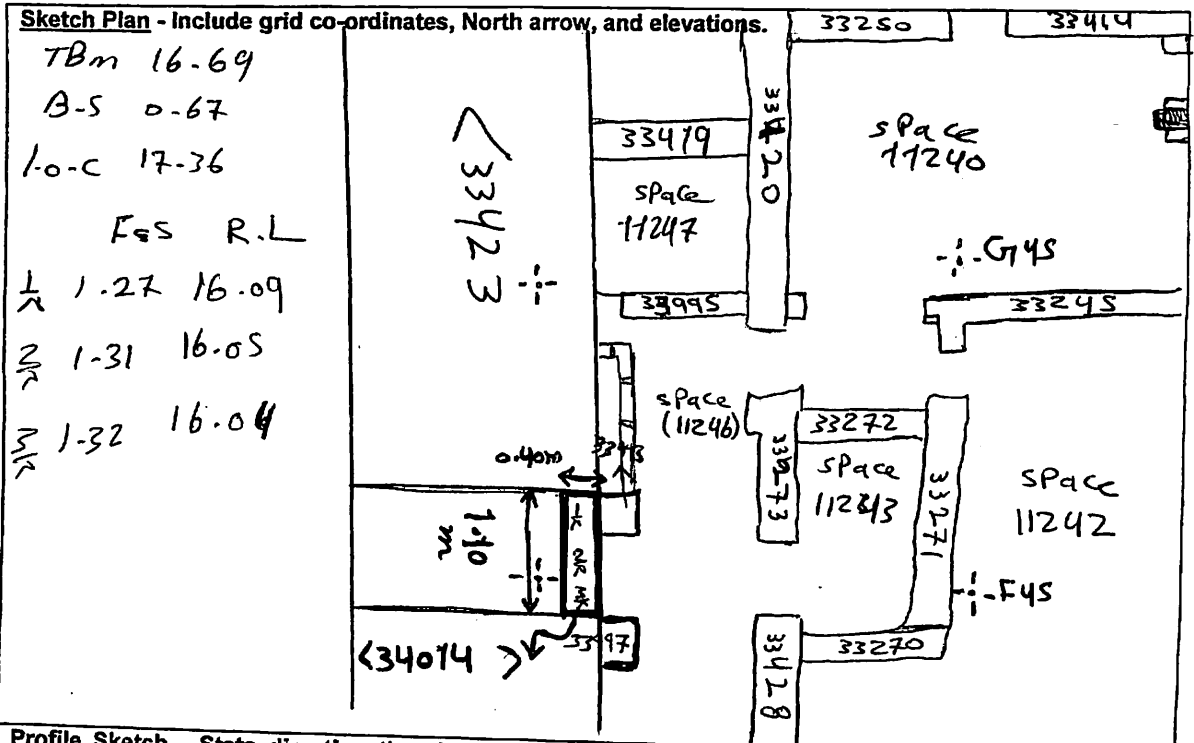


AREA: <i>WCT-67</i>	GRID SQUARE (S): <i>F/G 45</i>	GRID CO-ORDINATES: E N	INITIALS & DATE: <i>AKOA</i> <i>11 March 2012</i>	FEATURE No.: <i>34014</i>									
FEATURE TYPE (For example wall, staircase, bench, foundation structure, platform etc.):			Full extent visible in plan:  YES / NO										
1. Dimensions (in metres)	Length: <i>1.70m</i>	Width: <i>0.40m</i>	Height: <i>0.25m</i>										
2. Type of material(s) used													
3. Coursing (form of construction)													
4. Orientation	<i>North - South</i>												
5. Associated collapse													
6. Cut & fill feature #'s													
7. Repaired?													
8. Associated floors													
9. Surface treatments? E.g. plaster, paint, mouldings													
10. Size of one component													
11. Bonding material													
12. Excavated	Yes/No												
Mini stratigraphic matrix		Abuts: <i>Same as:</i>											
<table border="1" style="width: 100%; text-align: center;"> <tr> <td style="width: 20%; height: 20px;"></td> <td style="width: 20%;"><i>33423</i></td> <td style="width: 20%; height: 20px;"></td> </tr> <tr> <td></td> <td style="border: 1px solid black;"><i>34014</i></td> <td></td> </tr> <tr> <td style="width: 20%; height: 20px;"></td> <td style="width: 20%;"><del><i>33423</i></del> <i>34001</i></td> <td style="width: 20%; height: 20px;"></td> </tr> </table>			<i>33423</i>			<i>34014</i>			<del><i>33423</i></del> <i>34001</i>		Abutted by: <i>Associated features:</i>		
	<i>33423</i>												
	<i>34014</i>												
	<del><i>33423</i></del> <i>34001</i>												
		Bonded into:											
		Contiguous with:											
Discussion and interpretation:													
<p><i>North - south marl brick wall &lt;34014&gt;, may be blocked rectangular entrant in wall &lt;33423&gt;</i></p>													

Remember: do not just draw the architectural feature in isolation. Show how it relates to surrounding features and include details of surface treatments, repairs/modifications/damage, bonding material(s), and associated cuts. Annotate all aspects of the feature or use a Drawing Key. Measurements must be included for all aspects of the feature and surrounding features.



**Profile Sketch** - State direction the elevation of the feature being drawn is facing e.g. 'West Facing Elevation of Feature .... If feature was drawn in section then include the grid co-ordinates and elevations.

Drawing No.'s:	Photo No.'s:
Space No.: 11246	Structure No.:
Matrix Group:	Matrix Phase:
Samples taken:	