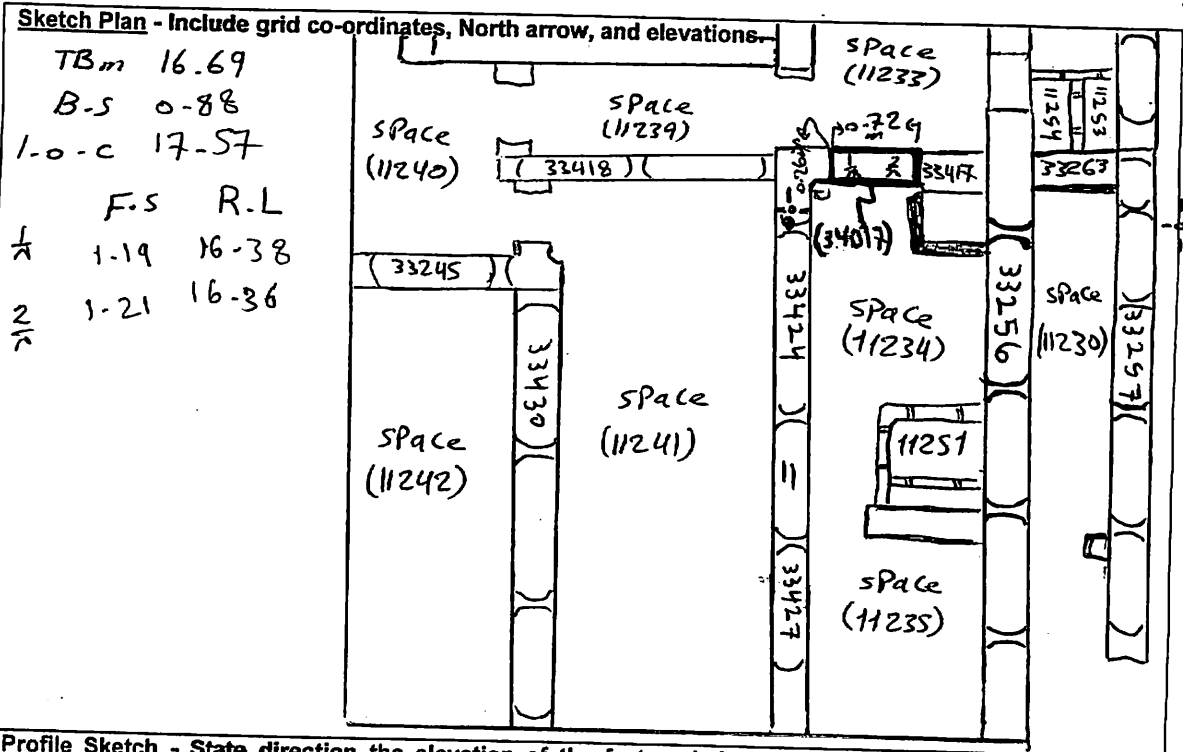


AREA: KK-E+	GRID SQUARE (S): H 47	GRID CO-ORDINATES: E N	INITIALS & DATE: AKOA 9 March 2012	FEATURE No.: 34017									
FEATURE TYPE (For example wall, staircase, bench, foundation structure, platform etc.):			Full extent visible in plan: YES / NO										
1. Dimensions (in metres)	Length: 0.72m	Width: 0.26m	Height: 0.75m										
2. Type of material(s) used													
3. Coursing (form of construction)													
4. Orientation	East-west												
5. Associated collapse													
6. Cut & fill feature #'s													
7. Repaired?													
8. Associated floors													
9. Surface treatments? E.g. plaster, paint, mouldings													
10. Size of one component													
11. Bonding material													
12. Excavated	Yes/No												
Mini stratigraphic matrix <table border="1" style="width: 100%; text-align: center;"> <tr> <td style="width: 30px; height: 30px;"></td> <td style="width: 30px; height: 30px;">33859</td> <td style="width: 30px; height: 30px;"></td> </tr> <tr> <td></td> <td style="border-top: 1px solid black;">34017</td> <td></td> </tr> <tr> <td style="width: 30px; height: 30px;"></td> <td style="width: 30px; height: 30px;">33857</td> <td style="width: 30px; height: 30px;"></td> </tr> </table>			33859			34017			33857		Abuts: Same as: Abutted by: Associated features: Bonded into: Contiguous with:		
	33859												
	34017												
	33857												
Discussion and interpretation:  east-west mull brick wall (34017), may be blocked the northern entrance of space (11234), it forms the southern limit of space (11235)													

Remember: do not just draw the architectural feature in isolation. Show how it relates to surrounding features and include details of surface treatments, repairs/modifications/damage, bonding material(s), and associated cuts. Annotate all aspects of the feature or use a Drawing Key. Measurements must be included for all aspects of the feature and surrounding features.



**Profile Sketch - State direction the elevation of the feature being drawn is facing e.g. 'West Facing Elevation of Feature .... If feature was drawn in section then include the grid co-ordinates and elevations.**

Drawing No.'s:	Photo No.'s:
Space No.: 11233, 11234	Structure No.:
Matrix Group:	Matrix Phase:
Samples taken:	