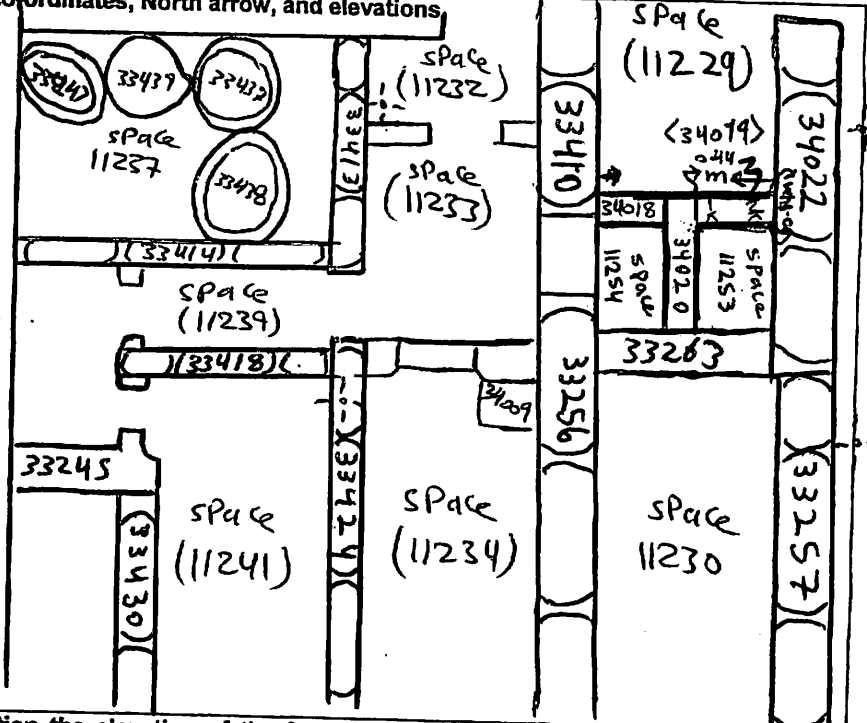


AREA: <i>kkt €7</i>	GRID SQUARE (S): <i>H 47</i>	GRID CO-ORDINATES: <i>E</i> <i>N</i>	INITIALS & DATE: <i>AKOA</i> <i>10 March 2012</i>	FEATURE No.: <i>34019</i>									
FEATURE TYPE (For example wall, staircase, bench, foundation structure, platform etc.):			Full extent visible in plan: <b>YES / NO</b>										
1. Dimensions (in metres)	Length: <i>0.44m</i>	Width: <i>0.14m</i>	Height: <i>0.36</i>										
2. Type of material(s) used													
3. Coursing (form of construction)													
4. Orientation	<i>East - west</i>												
5. Associated collapse													
6. Cut & fill feature #'s													
7. Repaired?													
8. Associated floors													
9. Surface treatments? E.g. plaster, paint, mouldings													
10. Size of one component													
11. Bonding material													
12. Excavated	Yes/No												
<b>Mini stratigraphic matrix</b> <table border="1" style="width: 100%; text-align: center;"> <tr> <td style="width: 30%; height: 20px;"></td> <td style="width: 30%; height: 20px;"><i>34018</i></td> <td style="width: 30%; height: 20px;"></td> </tr> <tr> <td></td> <td style="border-top: 1px solid black; height: 20px;"><i>34019</i></td> <td></td> </tr> <tr> <td style="border-top: 1px solid black; height: 20px;"><i>34020</i></td> <td style="border-top: 1px solid black; height: 20px;"><i>34040</i></td> <td style="border-top: 1px solid black; height: 20px;"></td> </tr> </table>			<i>34018</i>			<i>34019</i>		<i>34020</i>	<i>34040</i>		Abuts: <i>34022-34020</i> Same as: Abutted by:      Associated features: Bonded into: Contiguous with:		
	<i>34018</i>												
	<i>34019</i>												
<i>34020</i>	<i>34040</i>												
<b>Discussion and interpretation:</b> <p><i>East-west tiny marl brick wall (34019)</i>  <i>r forms the south limit of space (11229), also</i>  <i>the north limit of space (11253)</i></p>													

Remember: do not just draw the architectural feature in isolation. Show how it relates to surrounding features and include details of surface treatments, repairs/modifications/damage, bonding material(s), and associated cuts. Annotate all aspects of the feature or use a Drawing Key. Measurements must be included for all aspects of the feature and surrounding features.

Sketch Plan - Include grid co-ordinates, North arrow, and elevations

TBm 16.69  
 B.S 0.88  
 I.O.C 17.57  
 F.S R.L  
 1 7.59 15.98  
 2 1.60 15.97



Profile Sketch - State direction the elevation of the feature being drawn is facing e.g. 'West Facing Elevation of Feature .... If feature was drawn in section then include the grid co-ordinates and elevations.

Drawing No.'s:	Photo No.'s:
Space No.: (11229), (11253)	Structure No.:
Matrix Group:	Matrix Phase:
Samples taken:	