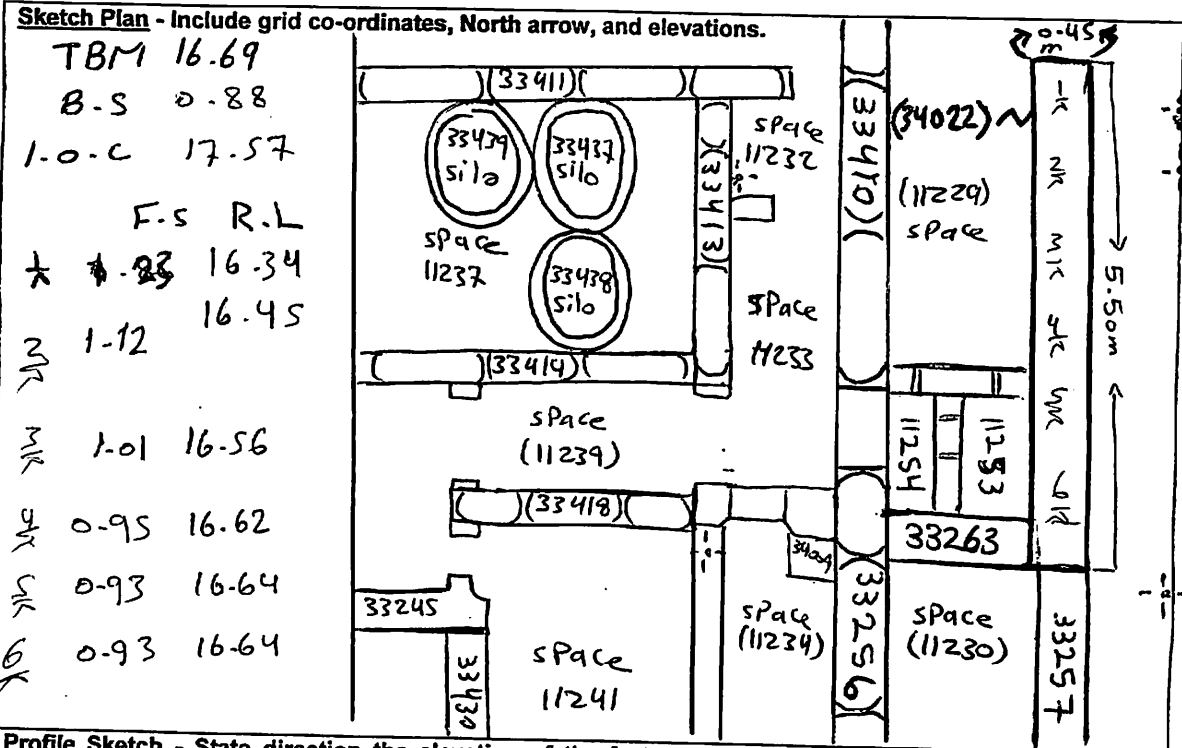


AREA: <i>kkj-ct</i>	GRID SQUARE (S): <i>H, I 47</i>	GRID CO-ORDINATES: E N	INITIALS & DATE: <i>AkOA</i> <i>10 March 2012</i>	FEATURE No.: <i>34022</i>									
FEATURE TYPE (For example wall, staircase, bench, foundation structure, platform etc.):			Full extent visible in plan: YES / NO										
1. Dimensions (in metres)	Length: <i>5.50m</i>	Width: <i>0.45m</i>	Height: <i>0.87m</i>										
2. Type of material(s) used													
3. Coursing (form of construction)													
4. Orientation	<i>North - South</i>												
5. Associated collapse													
6. Cut & fill feature #'s													
7. Repaired?													
8. Associated floors													
9. Surface treatments? E.g. plaster, paint, mouldings													
10. Size of one component													
11. Bonding material													
12. Excavated	Yes/No												
Mini stratigraphic matrix		Abuts: Same as:											
<table border="1"> <tr> <td></td> <td><i>3425</i></td> <td></td> </tr> <tr> <td></td> <td><i>34022</i></td> <td></td> </tr> <tr> <td></td> <td><i>33256</i></td> <td></td> </tr> </table>			<i>3425</i>			<i>34022</i>			<i>33256</i>		Abutted by: <i>34020-33263</i> Associated features: Bonded into: Contiguous with:		
	<i>3425</i>												
	<i>34022</i>												
	<i>33256</i>												
Discussion and interpretation:													
<p><i>North - south masonry brick wall (34022), forms the eastern limit of spaces (11229) (11253).</i></p>													

Remember: do not just draw the architectural feature in isolation. Show how it relates to surrounding features and include details of surface treatments, repairs/modifications/damage, bonding material(s), and associated cuts. Annotate all aspects of the feature or use a Drawing Key. Measurements must be included for all aspects of the feature and surrounding features.



Profile Sketch - State direction the elevation of the feature being drawn is facing e.g. 'West Facing'. Elevation of Feature If feature was drawn in section then include the grid co-ordinates and elevations.

Drawing No.'s:	Photo No.'s:
Space No.: (11229), (11253)	Structure No.:
Matrix Group:	Matrix Phase:
Samples taken:	