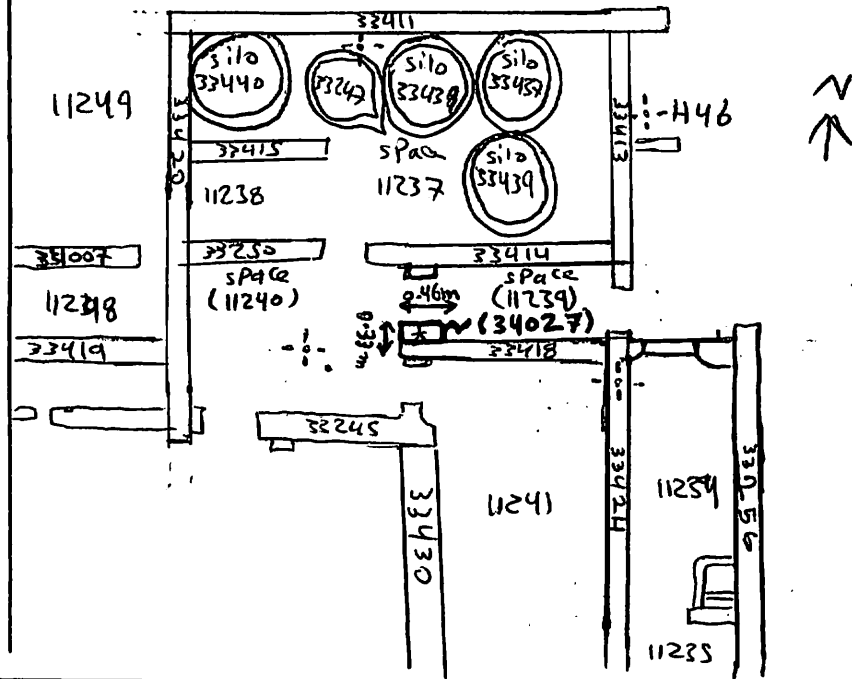


AREA: <i>kkt-ε+</i>	GRID SQUARE (S): <i>146</i>	GRID CO-ORDINATES: E N	INITIALS & DATE: <i>ALCOA</i> <i>11 March 2012</i>	FEATURE No.: <i>34027</i>
FEATURE TYPE (For example wall, staircase, bench, foundation structure, platform etc.):			Full extent visible in plan: YES / NO	
1. Dimensions (in metres)	Length: <i>0.46m</i>	Width: <i>0.33m</i>	Height: <i>0.485m</i>	
2. Type of material(s) used				
3. Coursing (form of construction)				
4. Orientation	<i>east-west</i>			
5. Associated collapse				
6. Cut & fill feature #'s				
7. Repaired?				
8. Associated floors				
9. Surface treatments? E.g. plaster, paint, mouldings				
10. Size of one component				
11. Bonding material				
12. Excavated	Yes/No			
Mini stratigraphic matrix		Abuts: <i>33418</i>	Same as:	
<input type="checkbox"/>	<i>34004</i>	<input type="checkbox"/>	Abutted by:	
			Associated features:	
	<i>34027</i>		Bonded into:	
<input type="checkbox"/>	<i>33418</i>	<input type="checkbox"/>	Contiguous with:	
Discussion and interpretation:				
<p><i>sub-rectangular wall brick door jamb (34027)</i> <i>from the western limit of space (11239)</i></p>				

Remember: do not just draw the architectural feature in isolation. Show how it relates to surrounding features and include details of surface treatments, repairs/modifications/damage, bonding material(s), and associated cuts. Annotate all aspects of the feature or use a Drawing Key. Measurements must be included for all aspects of the feature and surrounding features.

Sketch Plan - Include grid co-ordinates, North arrow, and elevations.

TBm 16-69
 B-S 0-67
 L.O.C 17-36
 F-s R.L
 * 1-18 16-18



Profile Sketch - State direction the elevation of the feature being drawn is facing e.g. 'West Facing Elevation of Feature If feature was drawn in section then include the grid co-ordinates and elevations.

Drawing No.'s:	Photo No.'s:
Space No.: 11239, 11240	Structure No.:
Matrix Group:	Matrix Phase:
Samples taken:	