

GPMP GIZA

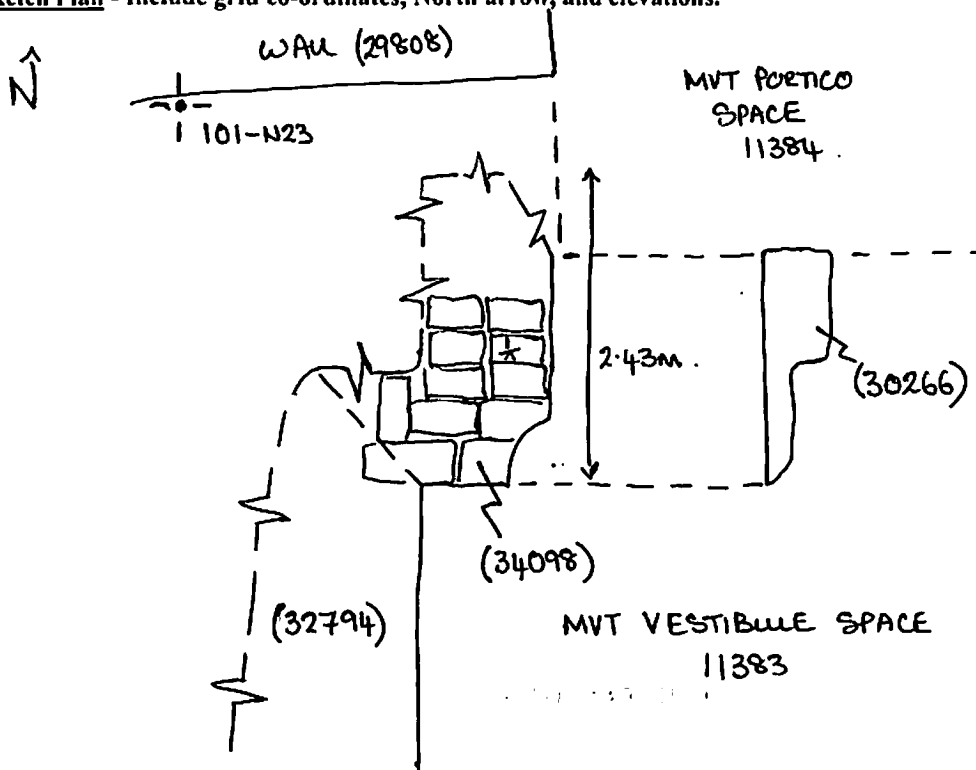
Site: SAPS 2/1/774 Area: VKA-A1 MVT-E.	GRID SQUARE(S) 101-N23	ARCHITECTURE	FEATURE 34098
1. Material	1) MUDBRICK.		
2. Size of materials	2) UNKNOWN		
3. Finish	3) REGULAR COURSE		
4. Coursing/bond	4) TWO ROWS OF HEADERS		
5. Form	5) WALL		
6. Direction of faces	6) SOUTH.		
7. Orientation	7) E/W		
8. Dimensions	8) 2.43m (L) x 1.46m (W) HEIGHT UNKNOWN		
9. Associated collapse	9) UNKNOWN		
10. Founds, cuts & fills	10) "		
11. Repaired	11) "		
12. Associated floors	12) "		
13. Plastered	13) "		
14. Wall core	14) "		
15. Types of brick (%)	15) 100% MUDBRICK TYPE UNKNOWN		
16. Composition of bricks	16) UNKNOWN		
17. Dimensions of bricks (sample of three)	17) "		
Stratigraphic Matrix		Abuts	Above
		Abutted by	Below
		Bonded into	(32794)
		Contiguous with	(30266)
INTERPRETATION		Enclosing	Internal
Reason for decay	NOT EXCAVATED		
Indications of original dimensions	FEATURE NUMBER ASSIGNED DURING AERA		
Indications of original functions	DATA CURATION PROJECT. PREVIOUSLY LUMPED TOGETHER WITH WALL (32794).		
REMAINS OF WALL THAT FORMED THE WESTERN SIDE OF THE ENTRANCE TO MVT VESTIBULE SPACE 11383.			
Associated contexts: (32794)			
Context Same As: (30266)			
Drawing Nos: 2011-81			
Photographs (feature in plan, elevation, materials used, surface treatment e.g. plaster, paint etc.)		Finds	
Description		Description	Artefact no.
Photograph No.	Description	Samples (flotation, wet sieve, materials used e.g. bricks, stone, wood, bonding material etc.)	
		Sample No.	Description
		Phase:	Checked
			Initials DCJ . Date 07 DEC 2012

(34098)

Sketch Drawings (in plan and in profile)

Remember: do not just draw the architectural feature in isolation. Show how it relates to surrounding features and include details of surface treatments, repairs/modifications/damage, bonding material(s), and associated cuts. Annotate all aspects of the feature or use a Drawing Key. Measurements must be included for all aspects of the feature and surrounding features.

Sketch Plan - Include grid co-ordinates, North arrow, and elevations.



Profile Sketch

- State direction the elevation of the feature being drawn is facing e.g. 'West Facing Elevation of Feature
- If feature was drawn in section then include the grid co-ordinates and elevations.

TBM: 19.57

BS: 1.73

IH: 21.30

FS

RL

1/2 2.21

19.09