

GPMP GIZA

Site: SAPS 2 / LFAA Area: KKTAI / MVT-E	GRID SQUARE(S) 101-L24, 101-M24	ARCHITECTURE	FEATURE 34100
1. Material	1) MUDBRICK		
2. Size of materials	2) UNKNOWN		
3. Finish	3) POSSIBLY REGULAR COURSING? ONLY 7 BRICKS WERE		
4. Coursing/bond	4) UNKNOWN } DRAWN		
5. Form	5) WALL		
6. Direction of faces	6) NORTH, WEST, SOUTH		
7. Orientation	7) E/W		
9. Associated collapse	8) 4.56m (L) x 2.33m (W) x 1.14m HEIGHT.		
10. Finds, cuts & fills	9) (29979) (29993)		
11. Repaired	10) UNKNOWN		
12. Associated floors	11) "		
13. Plastered	12) (30025) (30251)		
14. Wall core	13) (30273) (30250)		
15. Types of brick (%)	14) UNKNOWN		
16. Composition of bricks	15) 100% MUDBRICK TYPE UNKNOWN		
17. Dimensions of bricks (sample of three)	16) UNKNOWN		
	17) "		

Stratigraphic Matrix	Abuts <input checked="" type="checkbox"/> Above
	Abutted by (30026)(30024) Below
	Bonded into (30249)(33144)
	Contiguous with

INTERPRETATION	<u>Enclosing</u>	<u>Internal</u>	External
Reason for decay	NOT EXCAVATED		
Indications of original dimensions	FEATURE NUMBER ASSIGNED DURING AERA		
Indications of original functions	DATA CURATION PROJECT. PREVIOUSLY LUMPED		

TOGETHER WITH (30249).

SOUTHEASTERN E/W WALL OF MVT VESTIBULE SPACE #8 11383.
RELATIONSHIP TO WALL (32785) UNKNOWN

Associated contexts: (30252)(30253)(30254) LIMESTONE PAVING SLABS

Context Same As: (30249)(33144)

Drawing Nos: 2008-70, 2011-82

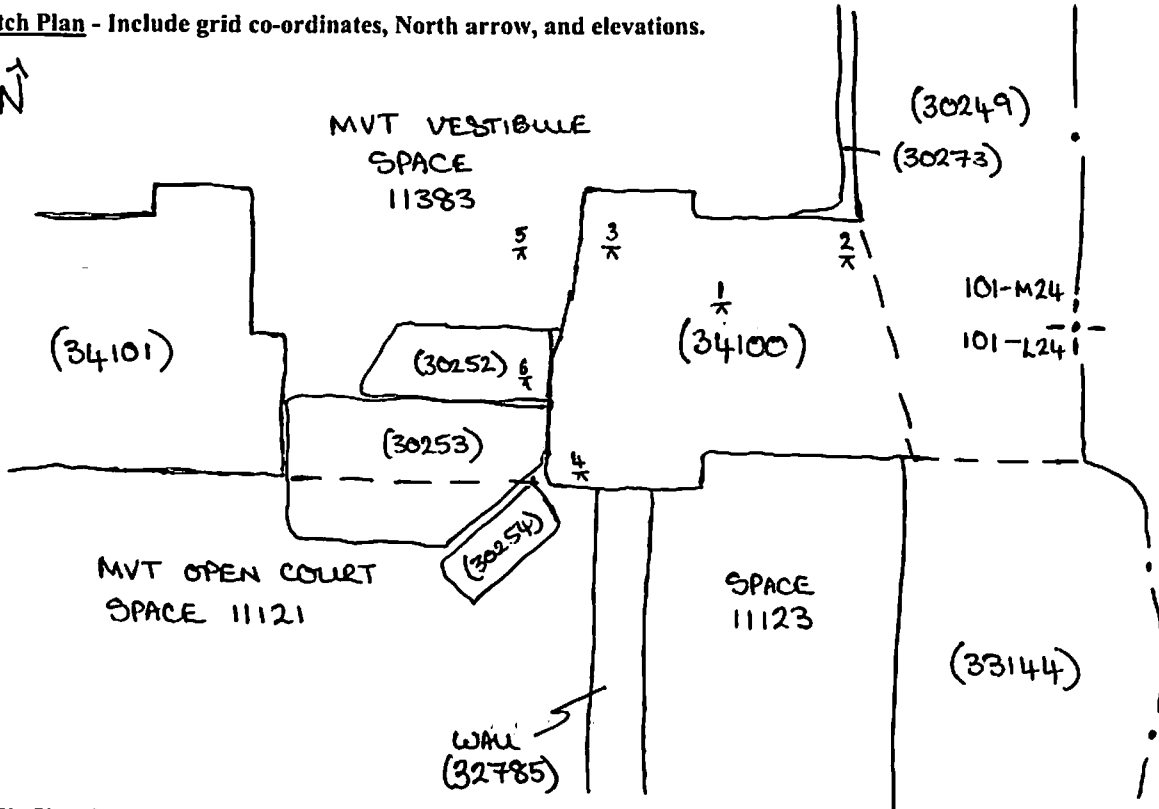
Photographs (feature in plan, elevation, materials used, surface treatment e.g. plaster, paint etc.)		Finds		Samples (flotation, wet sieve, materials used e.g. bricks, stone, wood, bonding material etc.)	
Photograph No.	Description	Description	Artefact no.	Sample No.	Description
		Phase:		Checked	Initials DCJ Date 07 DEC 2012

(34100)

Sketch Drawings (in plan and in profile)

Remember: do not just draw the architectural feature in isolation. Show how it relates to surrounding features and include details of surface treatments, repairs/modifications/damage, bonding material(s), and associated cuts. Annotate all aspects of the feature or use a Drawing Key. Measurements must be included for all aspects of the feature and surrounding features.

Sketch Plan - Include grid co-ordinates, North arrow, and elevations.



Profile Sketch

- State direction the elevation of the feature being drawn is facing e.g. 'West Facing Elevation of Feature ...
- If feature was drawn in section then include the grid co-ordinates and elevations.

TBM: 18.54
BS: 1.81
IH: 20.35

TBM: 19.57
BS: 1.63
IH: 21.20

	FS	RL
$\frac{1}{\pi}$	1.66	18.69
$\frac{2}{\pi}$	1.35	19.00
$\frac{3}{\pi}$	2.35	18.00
$\frac{5}{\pi}$	2.49	17.86

	FS	RL
$\frac{4}{\pi}$	3.11	18.09
$\frac{6}{\pi}$	3.33	17.87