

GPMP GIZA

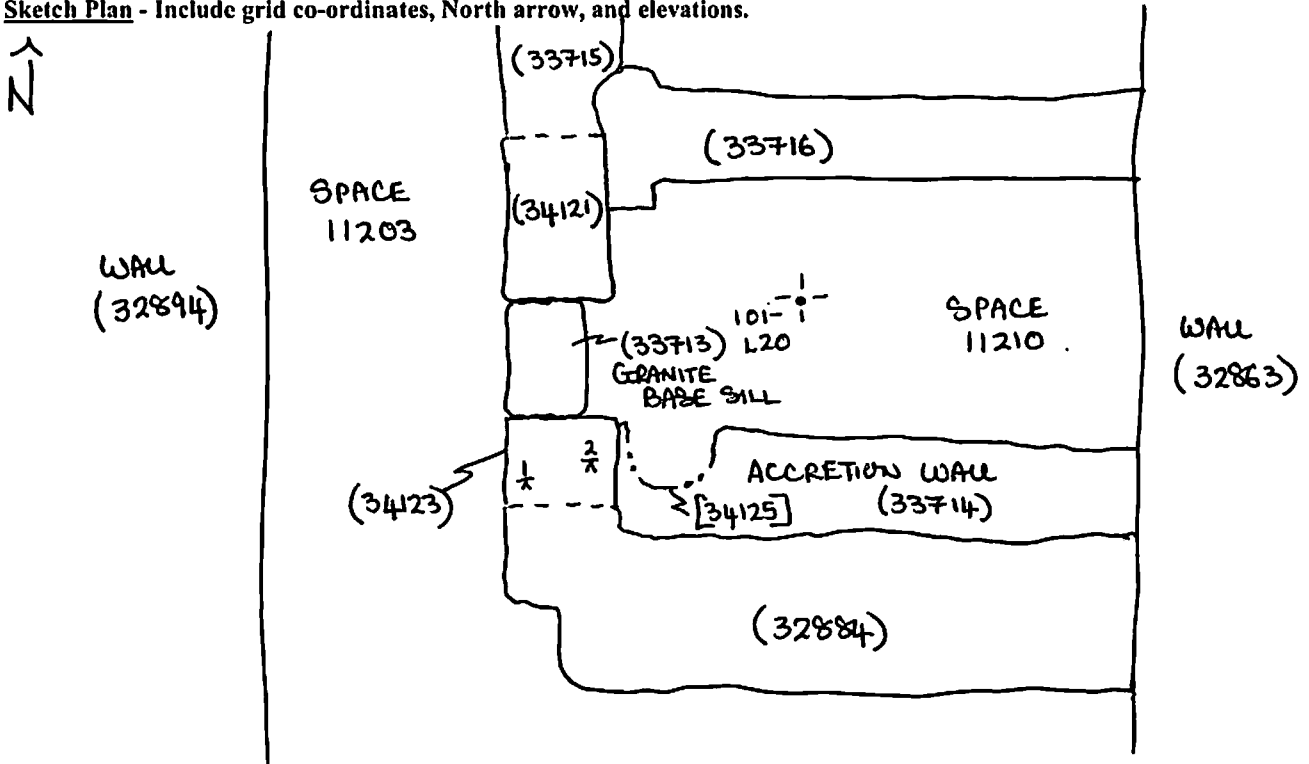
Site: <b>SAPS 2/LTM</b> Area: <b>MVT-E</b>	GRID SQUARE(S) <b>101-L20</b>	ARCHITECTURE	FEATURE <b>34123</b>
1. Material	1) <b>MUD BRICK</b>		
2. Size of materials	2) <b>UNKNOWN</b>		
3. Finish	3) <b>PROBABLY REGULAR COURSING</b>		
4. Coursing/bond	4) <b>COMBINATION OF HEADERS &amp; STRETCHERS</b>		
5. Form	5) <b>WALL</b>		
6. Direction of faces	6) <b>NORTH, EAST &amp; WEST</b>		
7. Orientation	7) <b>N/S</b>		
8. Dimensions	8) <b>1.04m (L) X 0.79m (W) HEIGHT UNKNOWN</b>		
9. Associated collapse	9) <b>(32884) (32832) (32791)</b>		
10. Finds, cuts & fills	10) <b>UNKNOWN</b>		
11. Repaired	11) <b>"</b>		
12. Associated floors	12) <b>POSSIBLY (33717) IN SPACE 11210</b>		
13. Plastered	13) <b>UNKNOWN</b>		
14. Wall core	14) <b>"</b>		
15. Types of brick (%)	15) <b>"</b>		
16. Composition of bricks	16) <b>"</b>		
17. Dimensions of bricks (sample of three)	17) <b>"</b>		
Stratigraphic Matrix			Abuts Above Abutted by (33714) Below Bonded into (32884) Contiguous with (33713) (34121)
INTERPRETATION	Enclosing Internal External		
Reason for decay	NOT EXCAVATED		
Indications of original dimensions	FEATURE NUMBER ASSIGNED DURING AERA DATA		
Indications of original functions	CURATION PROJECT. PREVIOUSLY LUMPED TOGETHER WITH (32884).		
ONE OF THE WESTERN WALLS OF SPACE 11210 & A BOUNDING WALL OF CORRIDOR SPACE 11203. NORTHERN LIMIT FORMS THE SOUTHERN SIDE OF THE ACCESS POINT TO SPACE 11210.			
Associated contexts: (33713) (34121)			
Context Same As: ✓			
Drawing Nos: 2012-89			
<del>Photographs (feature in plan, elevation, materials used, surface treatment e.g. plaster, paint etc.)</del>		<del>Finds</del>	
<del>Photograph No. Description</del>		<del>Description Artefact no.</del>	
<del>Sample No. Description</del>		<del>Sample No. Description</del>	
		Phase:	
		Checked	
		Initials <b>DCJ</b> Date <b>10 JAN 2013</b>	

(34123)

Sketch Drawings (in plan and in profile)

Remember: do not just draw the architectural feature in isolation. Show how it relates to surrounding features and include details of surface treatments, repairs/modifications/damage, bonding material(s), and associated cuts. Annotate all aspects of the feature or use a Drawing Key. Measurements must be included for all aspects of the feature and surrounding features.

Sketch Plan - Include grid co-ordinates, North arrow, and elevations.



Profile Sketch

- State direction the elevation of the feature being drawn is facing e.g. 'West Facing Elevation of Feature ....
- If feature was drawn in section then include the grid co-ordinates and elevations.

TBM: 19.75

BB: 0.96

IH: 20.71

FS      RL

1/x 1.98      18.73

2/x 2.15      18.56