

GPMP GIZA

Site: <b>SAPS2/LFM</b> Area: <b>KKT-F</b>		GRID SQUARE(S) <b>101-V31</b>	ARCHITECTURE	FEATURE <b>34220</b>
1. Material 2. Size of materials 3. Finish 4. Coursing/bond 5. Form 6. Direction of faces 7. Orientation 8. Dimensions 9. Associated collapse 10. Finds, cuts & fills 11. Repaired 12. Associated floors 13. Plastered 14. Wall core 15. Types of brick (%) 16. Composition of bricks 17. Dimensions of bricks (sample of three)		1) <b>MUD BRICK</b> 2) <b>UNKNOWN</b> 3) <b>"</b> 4) <b>UNKNOWN</b> 5) <b>REMAINS OF WALL, OR DOORJAMB.</b> 6) <b>NORTH, EAST, WEST.</b> 7) <b>NE/SW</b> 8) <b>0.75m (L) X 0.19m (W).</b> 9) <b>POSSIBLY (300G7)</b> 10) <b>UNKNOWN</b> 11) <b>"</b> 12) <b>"</b> 13) <b>"</b> 14) <b>"</b> 15) <b>"</b> 16) <b>"</b> 17) <b>"</b>		
Stratigraphic Matrix <div style="display: flex; justify-content: space-around;"> <div style="border: 1px solid black; width: 50px; height: 50px; margin: 5px;"></div> <div style="border: 1px solid black; width: 50px; height: 50px; margin: 5px; text-align: center;">34220</div> <div style="border: 1px solid black; width: 50px; height: 50px; margin: 5px;"></div> </div>		Abuts <b>(21885)</b> . Above Abutted by Below Bonded into Contiguous with		
INTERPRETATION      Enclosing <u>Internal</u> External				
Reason for decay		<b>NOT EXCAVATED - NUMBER ASSIGNED DURING</b>		
Indications of original dimensions		<b>DATA CURATION PROJECT.</b>		
Indications of original functions				
<b>REMAINS OF EITHER A DOORJAMB, OR THE SOUTHERN LIMIT OF WALL (21915).</b>				
Associated contexts:				
Context Same As:				
Drawing Nos: <b>2008-142</b>				
<b>Photographs</b> (feature in plan, elevation, materials used, surface treatment e.g. plaster, paint etc.)		<b>Finds</b>		<b>Samples</b> (notation, wet sieve, materials used e.g. bricks, stone, wood, bonding material etc.)
Description	Description	Artefact no.	Sample No.	Description
Photograph No.	Description			
		Phase:	Checked	Initials <b>DCJ</b> Date <b>29 JAN 2013</b>

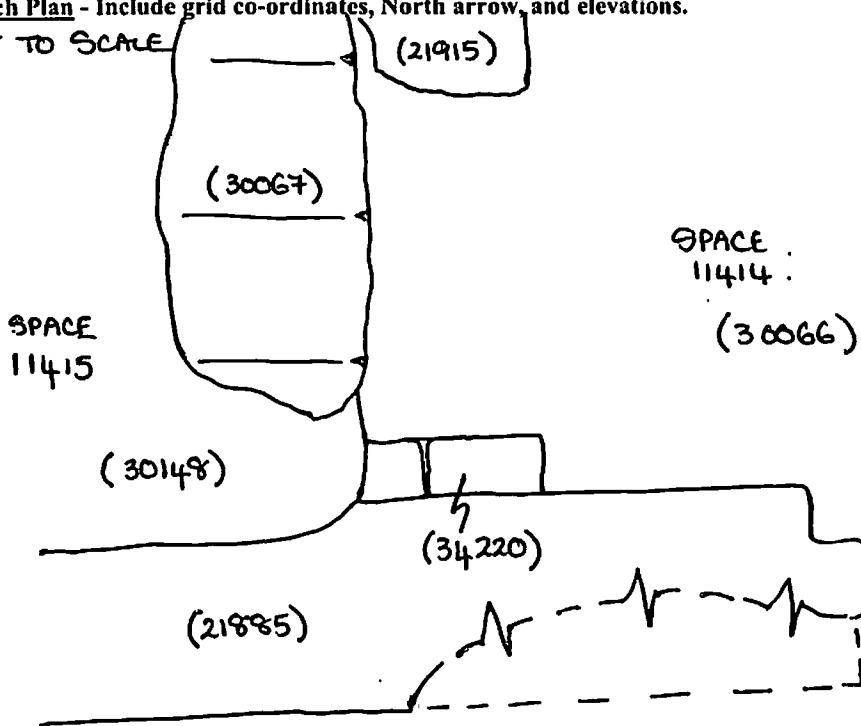
(34220)

**Sketch Drawings (in plan and in profile)**

Remember: do not just draw the architectural feature in isolation. Show how it relates to surrounding features and include details of surface treatments, repairs/modifications/damage, bonding material(s), and associated cuts. Annotate all aspects of the feature or use a Drawing Key. Measurements must be included for all aspects of the feature and surrounding features.

**Sketch Plan** - Include grid co-ordinates, North arrow, and elevations.

NOT TO SCALE



**Profile Sketch**

- State direction the elevation of the feature being drawn is facing e.g. 'West Facing Elevation of Feature ....
- If feature was drawn in section then include the grid co-ordinates and elevations.