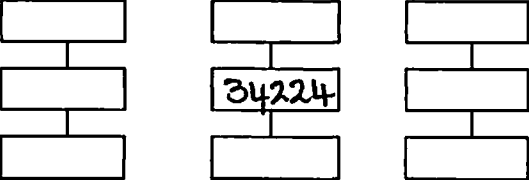


GPMG GAZA

Site: SAFS2 / LTM	GRID SQUARE(S) 101-W29, 101-X29	ARCHITECTURE	FEATURE 34224
Area: KKT-F			
1. Material	1) LIMESTONE		
2. Size of materials	2) SEE #8		
3. Finish	3) PRETTY MUCH SQUARED OFF		
4. Coursing/bond	4) N/A		
5. Form	5) THRESHOLD BASE SILL?		
6. Direction of faces	6) NORTH, SOUTH, EAST & WEST		
7. Orientation	7) /		
8. Dimensions	8) 0.79m N/S, 0.96m E/W		
9. Associated collapse	9) UNKNOWN		
10. Finds, cuts & fills	10) "		
11. Repaired	11) "		
12. Associated floors	12) "		
13. Plastered	13) "		
14. Wall core	14) N/A		
15. Types of brick (%)	15) N/A		
16. Composition of bricks	16) N/A		
17. Dimensions of bricks (sample of three)	17) N/A		
Stratigraphic Matrix	Abuts		Above
	Abutted by		Below
	Bonded into		
	Contiguous with (34225) (34223)		
<b>INTERPRETATION</b>	Enclosing	Internal	External
Reason for decay	NOT EXCAVATED - NUMBER ASSIGNED DURING DATA CURATION PROJECT.		
Indications of original dimensions			
Indications of original functions			
POSSIBLE REMAINS OF THE LIMESTONE THRESHOLD BASE SILL SELIM HASSAN MENTIONS IN HIS 1943 PUBLICATION (PAGE 40) WAS AT THE ENTRANCE TO ROOM 166.			
Associated contexts:			
Context Same As:			
Drawing Nos: 2005-284			
<b>Photographs</b> (feature in plan, elevation, materials used, surface treatment e.g. plaster, paint etc.)	<b>Finds</b>		<b>Samples</b> (flotation, wet sieve, materials used e.g. bricks, stone, wood, bonding material etc.)
Photograph No.	Description	Artefact no.	Sample No. Description
		Phase:	Checked
			Initials DCS Date 31 JAN 2013

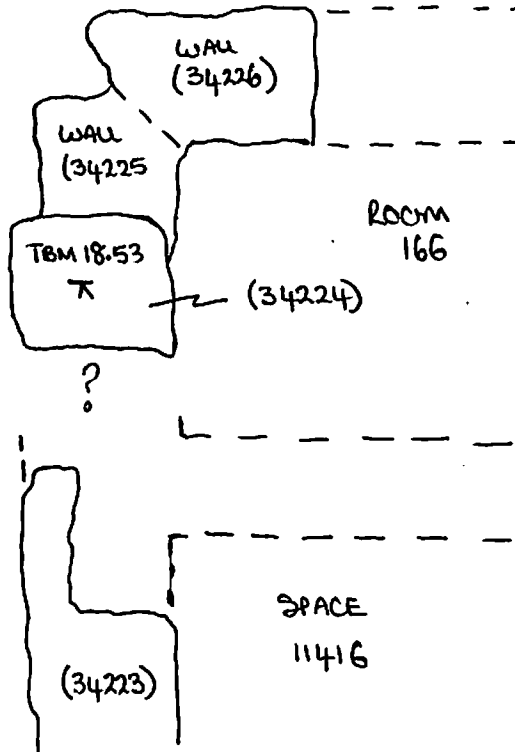
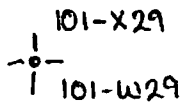
(34224)

**Sketch Drawings (in plan and in profile)**

Remember: do not just draw the architectural feature in isolation. Show how it relates to surrounding features and include details of surface treatments, repairs/modifications/damage, bonding material(s), and associated cuts. Annotate all aspects of the feature or use a Drawing Key. Measurements must be included for all aspects of the feature and surrounding features.

**Sketch Plan** - Include grid co-ordinates, North arrow, and elevations.

NOT TO SCALE



**Profile Sketch**

- State direction the elevation of the feature being drawn is facing e.g. 'West Facing Elevation of Feature ....
- If feature was drawn in section then include the grid co-ordinates and elevations.