

GPMP GIZA

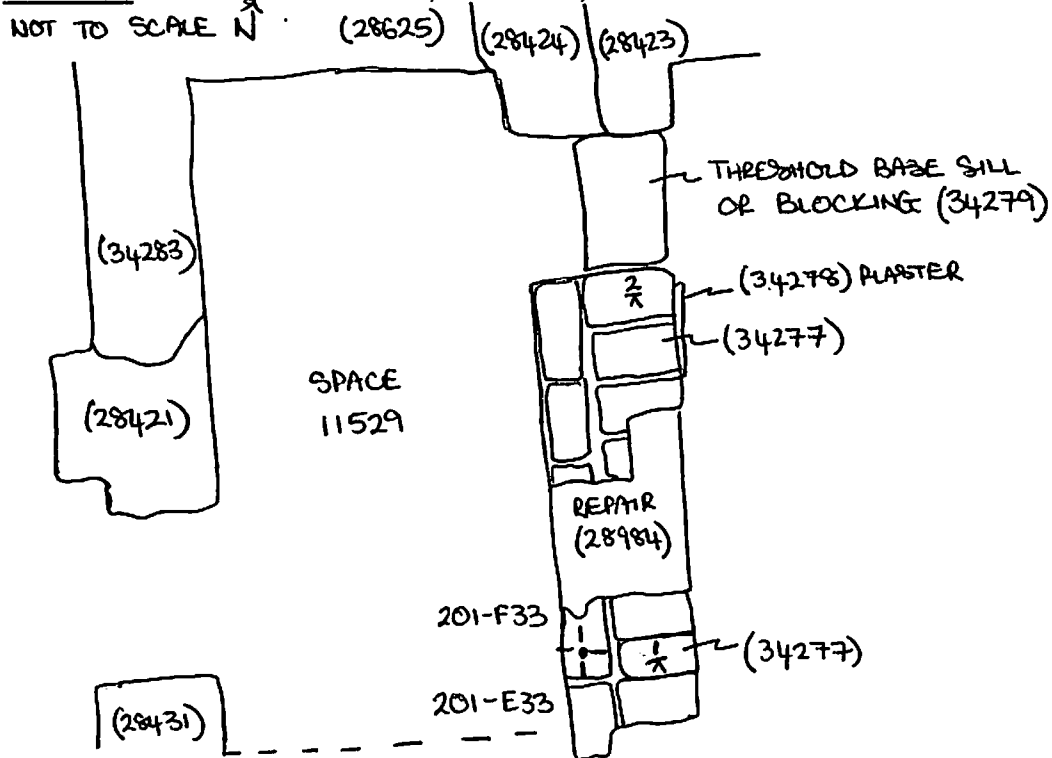
Site: SAPS 2 / LTM Area: KKT-N	GRID SQUARE(S) 201- E33, E34, F33, F34	ARCHITECTURE	FEATURE 34277
1. Material	1) MUDBRICK		
2. Size of materials	2) 0.43m (L) X 0.21m (W)		
3. Finish	3) REGULAR		
4. Coursing/bond	4) 2 ROWS OF BRICKS - WESTERN SIDE STRETCHERS		
5. Form	5) EASTERN SIDE HEADERS		
6. Direction of faces	6) WALL		
7. Orientation	7) E/W		
8. Dimensions	8) N/S/E		
9. Associated collapse	9) 1.90m (L) X 0.71m (W)		
10. Founds, cuts & fills	10) UNKNOWN		
11. Repaired	11) UNKNOWN		
12. Associated floors	12) REPAIRED WITH (28984)		
13. Plastered	13) UNKNOWN		
14. Wall core	14) (34278)		
15. Types of brick (%)	15) "		
16. Composition of bricks	16) "		
17. Dimensions of bricks (sample of three)	17) "		
Stratigraphic Matrix			Abuts Above Abutted by Below Bonded into Contiguous with (28431)(28424)(28421)
INTERPRETATION	Enclosing	Internal	External
Reason for decay	NOT EXCAVATED - NUMBER ASSIGNED DURING DATA		
Indications of original dimensions	CREATION PROJECT - PREVIOUSLY LUMPED TOGETHER		
Indications of original functions	WITH (28984)		
EASTERN BOUNDARY WALL OF SPACE 11529 IN STRUCTURE 15259.			
Associated contexts: (28431)(28424)(28421)(34278)			
Context Same As: <input checked="" type="checkbox"/>			
Drawing Nos: 2007-210, 2007-231, 2007-243			
Photographs (feature in plan, elevation, materials used, surface treatment e.g. plaster, paint etc.)		Finds	
Description		Artefact no.	
Photograph No. Description		Sample No. Description	
Phase:		Checked	
		Initials DCJ Date 30 MAR 2013	

(34277)

Sketch Drawings (in plan and in profile)

Remember: do not just draw the architectural feature in isolation. Show how it relates to surrounding features and include details of surface treatments, repairs/modifications/damage, bonding material(s), and associated cuts. Annotate all aspects of the feature or use a Drawing Key. Measurements must be included for all aspects of the feature and surrounding features.

Sketch Plan - Include grid co-ordinates, North arrow, and elevations.



Profile Sketch

- State direction the elevation of the feature being drawn is facing e.g. 'West Facing Elevation of Feature ...'
- If feature was drawn in section then include the grid co-ordinates and elevations.

TBM : 19.28
BB : 1.33
IH : 20.61

FS	RL
1/x 1.03	19.58
2/x 0.88	19.73