

GPMP GIZA

Site: SAES 2 / LTA 1 Area: KKT-N	GRID SQUARE(S) 201-F33, 201-G33	ARCHITECTURE	FEATURE 34285
1. Material 2. Size of materials 3. Finish 4. Coursing/bond 5. Form 6. Direction of faces 7. Orientation 8. Dimensions 9. Associated collapse 10. Founds, cuts & fills 11. Repaired 12. Associated floors 13. Plastered 14. Wall core 15. Types of brick (%) 16. Composition of bricks 17. Dimensions of bricks (sample of three)	1) MUDBRICK 2) 0.24m (L) X 0.09m (W) FROM PLAN. 3) REGULAR 4) TWO ROWS OF HEADERS. 5) WALL REPAIR 6) NE/SW 7) NW/SE. 8) 1.40m (L) X 0.67m (W) 9) UNKNOWN 10) " 11) " 12) " 13) " 14) POSSIBLY (34286) 15) UNKNOWN BUT POSSIBLY THE LITTLE BROWN BUENT BRICKS 16) UNKNOWN 17) SEE #2.		
Stratigraphic Matrix			Abuts Above Abutted by Below Bonded into Contiguous with (34282)
INTERPRETATION	Enclosing	Internal	External
Reason for decay	NOT EXCAVATED - NUMBER ASSIGNED DURING DATA		
Indications of original dimensions	CURATION PROJECT.		
Indications of original functions			
REMAINS OF A REPAIR TO WALL (34282). BOUNDARY WALL FOR SPACE 11528 & 11530 IN STRUCTURE 15259.			
Associated contexts:			
Context Same As:			
Drawing Nos: 2007-209, 2007-210			
Photographs (feature in plan, elevation, materials used, surface treatment e.g. plaster, paint etc.)	Finds		Samples (flotation, wet sieve, materials used e.g. bricks, stone, wood, bonding material etc.)
	Description	Artefact no	
Photograph No.	Description		Sample No.
			Description
		Phase:	Checked
			Initials DCJ Date 28 MARCH 2013.


(34285)

Sketch Drawings (in plan and in profile)

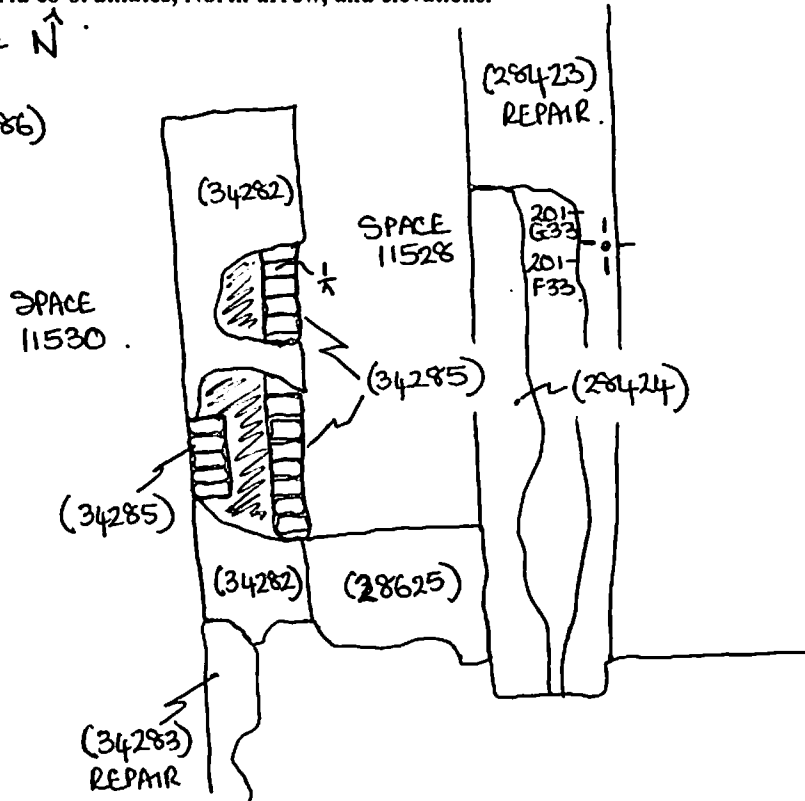
Remember: do not just draw the architectural feature in isolation. Show how it relates to surrounding features and include details of surface treatments, repairs/modifications/damage, bonding material(s), and associated cuts. Annotate all aspects of the feature or use a Drawing Key. Measurements must be included for all aspects of the feature and surrounding features.

Sketch Plan - Include grid co-ordinates, North arrow, and elevations.

NOT TO SCALE \uparrow N

KEY  CORE (34286)

TBM: 19.28
BS: 1.64
IH: 20.92
FS RL
+1.75 19.17.



Profile Sketch

- State direction the elevation of the feature being drawn is facing e.g. 'West Facing Elevation of Feature
- If feature was drawn in section then include the grid co-ordinates and elevations.