

GPMP GIZA

Site: <b>SAPS2/LFM</b> Area: <b>KKT-N</b>	GRID SQUARE(S) <b>201-E31</b>	ARCHITECTURE	FEATURE <b>34299</b>
1. Material	1) UNKNOWN		
2. Size of materials	2) 0.12m X 0.06m (W) FROM PLAN - BIGGEST PIECE		
3. Finish	3) IRREGULAR		
4. Coursing/bond	4) UNKNOWN		
5. Form	5) WALL CORE.		
6. Direction of faces	6) N/A		
7. Orientation	7) NE/SW		
8. Dimensions	8) 1.35m (L) X 0.34m (W) .		
9. Associated collapse	9) UNKNOWN		
10. Founds, cuts & fills	10) "		
11. Repaired	11) "		
12. Associated floors	12) "		
13. Plastered	13) N/A		
14. Wall core	14) "		
15. Types of brick (%)	15) "		
16. Composition of bricks	16) "		
17. Dimensions of bricks (sample of three)	17) SEE #2.		
Stratigraphic Matrix			Abuts Above Abutted by Below Bonded into Contiguous with (28372)(34298)
INTERPRETATION	Enclosing	(Internal)	External
Reason for decay	NOT EXCAVATED - NUMBER ASSIGNED DURING DATA		
Indications of original dimensions	CURATION PROJECT		
Indications of original functions			
REMAINS OF THE CORE OF EITHER REPAIR WALL (28372) OR ORIGINAL WALL (34298)			
SPACE 11535, 11536			
STRUCTURE 15258			
Associated contexts:			
Context Same As:			
Drawing Nos: 2007-186			
Photographs (feature in plan, elevation, materials used, surface treatment e.g. plaster, paint etc.)	Finds		Samples (flotation, wet sieve, materials used e.g. bricks, stone, wood, bonding material etc.)
	Description	Artefact no.	
Photograph No.	Description		Sample No. Description
		Phase:	Checked Initials DCJ Date 03 APRIL 2013 .

(34299)

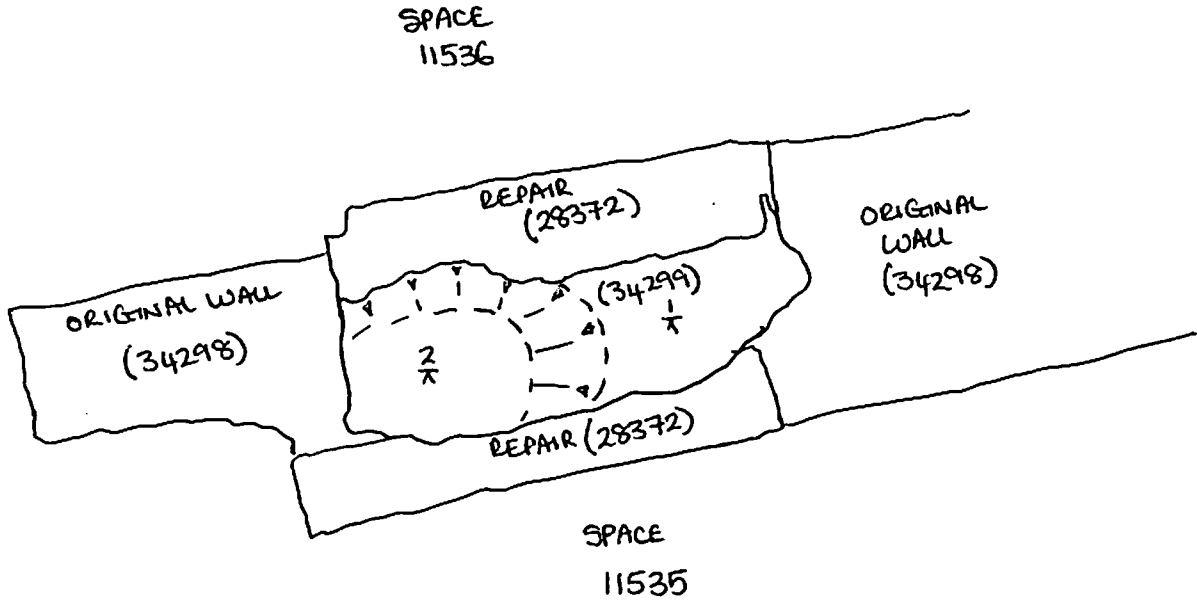
Sketch Drawings (in plan and in profile)

Remember: do not just draw the architectural feature in isolation. Show how it relates to surrounding features and include details of surface treatments, repairs/modifications/damage, bonding material(s), and associated cuts. Annotate all aspects of the feature or use a Drawing Key. Measurements must be included for all aspects of the feature and surrounding features.

Sketch Plan - Include grid co-ordinates, North arrow, and elevations.

201-E31 |

NOT TO SCALE  $\hat{N}$



Profile Sketch

- State direction the elevation of the feature being drawn is facing e.g. 'West Facing Elevation of Feature ....
- If feature was drawn in section then include the grid co-ordinates and elevations.

TBM: 21.38

BS: 1.24

IH: 22.62

FS      RL

$\frac{1}{x}$  2.64    19.98

$\frac{2}{x}$  2.63    19.99