

GPMP GIZA

Site: SAPS 2/ETAF Area: KKT-N	GRID SQUARE(S) 201-E30	ARCHITECTURE	FEATURE 34302
1. Material	1) MUDBRICK		
2. Size of materials	2) 0.49m (L) X 0.19m (W) . FROM PLAN		
3. Finish	3) REGULAR		
4. Coursing/bond	4) COMBINATION OF HEADERS & STRETCHERS		
5. Form	5) WALL		
6. Direction of faces	6) NE, SW, SE .		
7. Orientation	7) NW/SE		
8. Dimensions	8) 2.12m (L) X 0.60m (W)		
9. Associated collapse	9) UNKNOWN		
10. Founds, cuts & fills	10) "		
11. Repaired	11) WITH (27941) & (27942)		
12. Associated floors	12) UNKNOWN		
13. Plastered	13) (34303) (27947)		
14. Wall core	14) UNKNOWN		
15. Types of brick (%)	15) "		
16. Composition of bricks	16) "		
17. Dimensions of bricks (sample of three)	17) SEE #2 .		
Stratigraphic Matrix		Abuts	Above
		Abutted by	Below
		Bonded into	
		Contiguous with	
INTERPRETATION		Enclosing	(Internal) External
Reason for decay	NOT EXCAVATED - NUMBER ASSIGNED DURING		
Indications of original dimensions	DATA CREATION PROJECT.		
Indications of original functions			
REMAINS OF THE ORIGINAL BOUNDARY WALL FOR SPACE 11538, 11540 & 11541. STRUCTURE 15258.			
Associated contexts:			
Context Same As:			
Drawing Nos: 2007-178			
Photographs (feature in plan, elevation, materials used, surface treatment e.g. plaster, paint etc.)		Finds	
		Description	Artefact no.
		/	
		Samples (flotation, wet sieve, materials used e.g. bricks, stone, wood, bonding material etc.)	
Photograph No.	Description	Sample No.	Description
		Phase:	Checked
			Initials DCJ Date 03 APRIL 2013

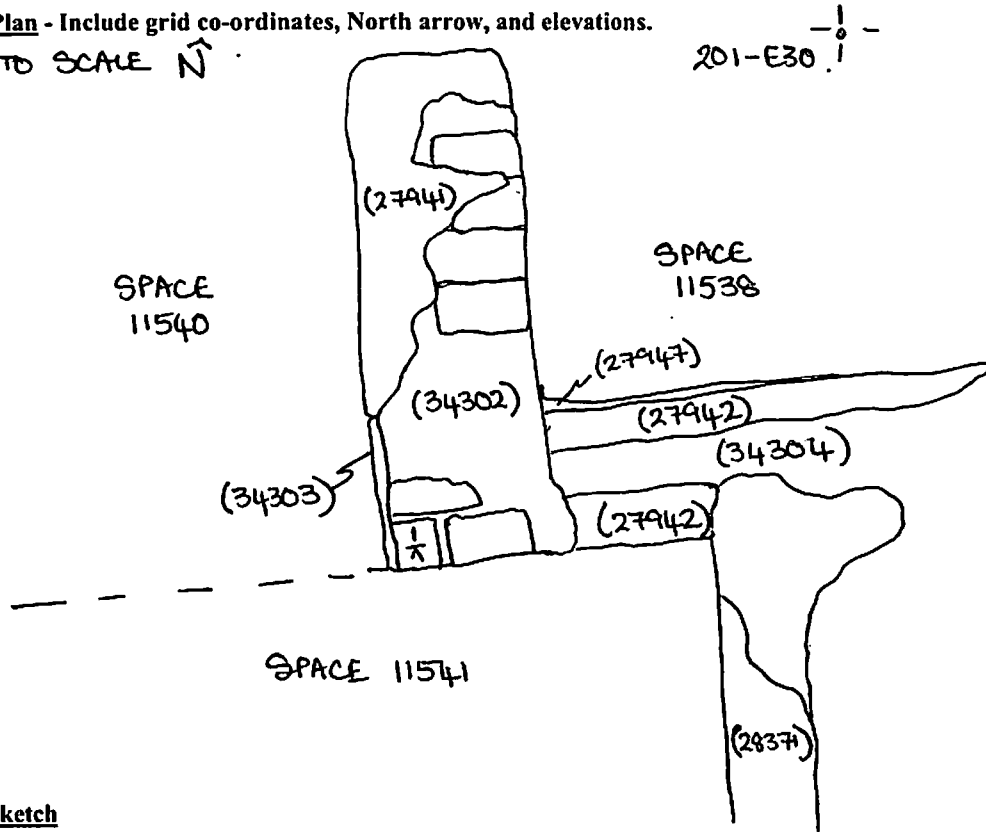
34302

Sketch Drawings (in plan and in profile)

Remember: do not just draw the architectural feature in isolation. Show how it relates to surrounding features and include details of surface treatments, repairs/modifications/damage, bonding material(s), and associated cuts. Annotate all aspects of the feature or use a Drawing Key. Measurements must be included for all aspects of the feature and surrounding features.

Sketch Plan - Include grid co-ordinates, North arrow, and elevations.

NOT TO SCALE \hat{N}



Profile Sketch

- State direction the elevation of the feature being drawn is facing e.g. 'West Facing Elevation of Feature ...'
- If feature was drawn in section then include the grid co-ordinates and elevations.

TBM: 21.38

Bs: 1.24

IH: 22.62

FS RL

$\frac{1}{1}$ 2.26 20.36