

GPMP G12A

Site: <b>SAPS 2 / E7M</b> Area: <b>KKT-N</b>	GRID SQUARE(S) <b>201-E30, 201-E31</b>	ARCHITECTURE	FEATURE <b>34304</b>
1. Material	1) UNKNOWN		
2. Size of materials	2) <b>0.13m (L) x 0.12m (W)</b> LARGEST PIECE ON PLAN -		
3. Finish	POTTERY, STONE?		
4. Coursing/bond	3) UNKNOWN		
5. Form	4) N/A		
6. Direction of faces	5) WALL CORE		
7. Orientation	6) N/A		
8. Dimensions	7) NE/SW & NW/SE.		
9. Associated collapse	8) <del>20</del> <b>2.05m (L) x 1.44m (L) x 0.33m (W)</b>		
10. Finds, cuts & fills	9) UNKNOWN		
11. Repaired	10) "		
12. Associated floors	11) "		
13. Plastered	12) "		
14. Wall core	13) NO.		
15. Types of brick (%)	14) N/A		
16. Composition of bricks	15) "		
17. Dimensions of bricks (sample of three)	16) " 17) SEE #2.		
Stratigraphic Matrix		Abuts	Above
		Abutted by	Below
		Bonded into	
		Contiguous with	
INTERPRETATION	Enclosing	<u>Internal</u>	External
Reason for decay	NOT EXCAVATED - NUMBER ASSIGNED DURING DATA		
Indications of original dimensions	CURATION PROJECT.		
Indications of original functions			
REMAINS OF WHAT APPEARS TO BE THE WALL CORE FOR EITHER REPAIRS (27942), (34300) & (28374) OR ORIGINAL WALLS (34298) (34306), (34302).			
STRUCTURE 15258.			
Associated contexts:			
Context Same As:			
Drawing Nos: <b>2007-178, 2007-186</b>			
<u>Photographs</u> (feature in plan, elevation, materials used, surface treatment e.g. plaster, paint etc.)		<u>Finds</u>	
		Description	Artefact no.
		<u>Samples</u> (flotation, wet sieve, materials used e.g. bricks, stone, wood, bonding material etc.)	
Photograph No.	Description	Sample No.	Description
		Phase:	Checked
			Initials <b>DCJ</b> Date <b>03 APRIL 2013</b>

34304

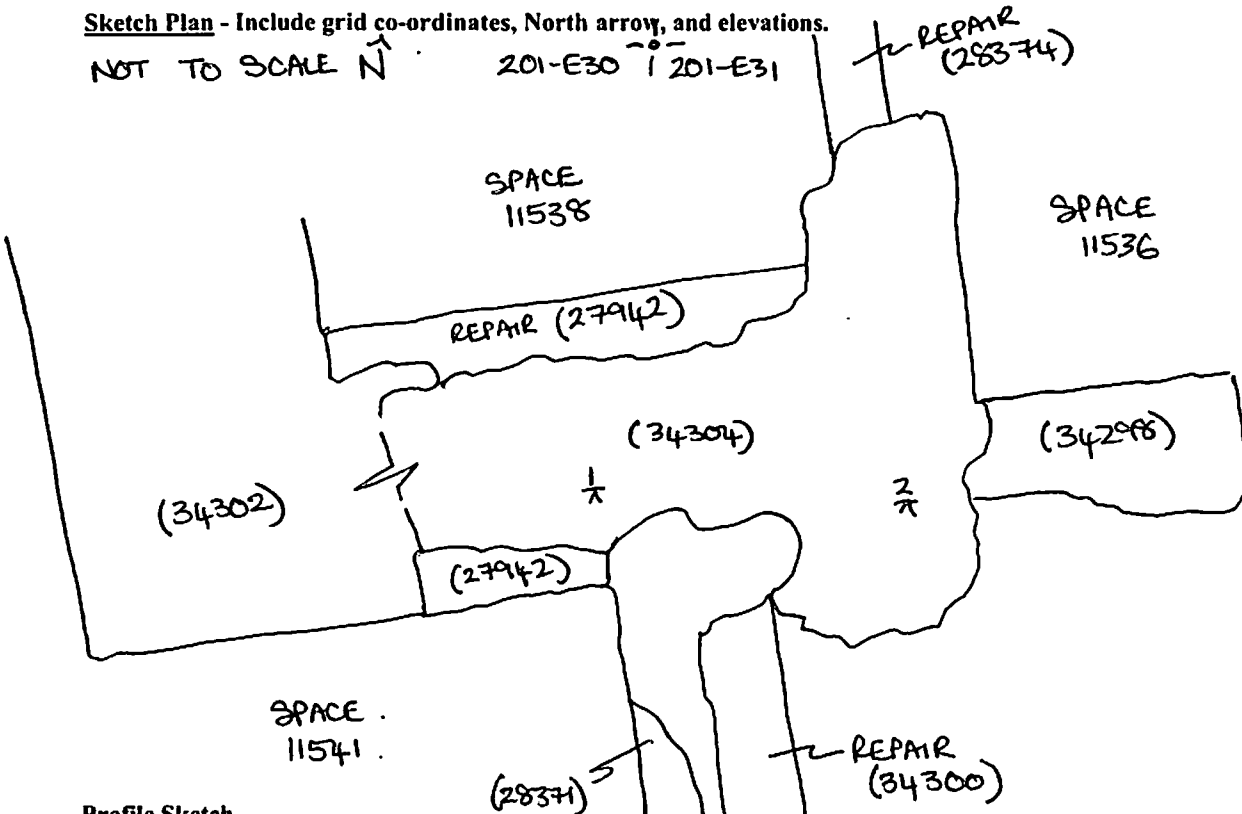
Sketch Drawings (in plan and in profile)

Remember: do not just draw the architectural feature in isolation. Show how it relates to surrounding features and include details of surface treatments, repairs/modifications/damage, bonding material(s), and associated cuts. Annotate all aspects of the feature or use a Drawing Key. Measurements must be included for all aspects of the feature and surrounding features.

Sketch Plan - Include grid co-ordinates, North arrow, and elevations.

NOT TO SCALE  $\hat{N}$

201-E30  $\hat{0}$  201-E31



Profile Sketch

- State direction the elevation of the feature being drawn is facing e.g. 'West Facing Elevation of Feature ...
- If feature was drawn in section then include the grid co-ordinates and elevations.

TBM: 21.38

BS: 1.24

IH: 22.62

FS	RL
$\frac{1}{\pi}$ 2.36	20.26
$\frac{2}{\pi}$ 2.43	20.18