

GPMAP GIZA

Site: SAPS 2 / LTM Area: KKT-N	GRID SQUARE(S) 201-E31	ARCHITECTURE	FEATURE 34305		
1. Material 2. Size of materials 3. Finish 4. Coursing/bond 5. Form 6. Direction of faces 7. Orientation 8. Dimensions 9. Associated collapse 10. Founds, cuts & fills 11. Repaired 12. Associated floors 13. Plastered 14. Wall core 15. Types of brick (%) 16. Composition of bricks 17. Dimensions of bricks (sample of three)	1) MUDBRICK 2) 0.23m (L) X 0.08m (W) FROM PLAN 3) REGULAR 4) 2 1/2 BRICKS IN HEADER FORMATION 5) WALL REPAIR 6) NE 7) NWISE 8) 0.29m (L) X 0.23m (W) 9) UNKNOWN 10) " 11) " 12) " 13) " 14) " 15) UNKNOWN 16) " BUT POSSIBLY THE LITTLE BROWN BURNT BRICKS 17) SEE #2.				
Stratigraphic Matrix <div style="display: flex; justify-content: space-around;"> <div style="border: 1px solid black; width: 40px; height: 40px; margin: 5px;"></div> <div style="border: 1px solid black; width: 40px; height: 40px; margin: 5px; text-align: center;">34305</div> <div style="border: 1px solid black; width: 40px; height: 40px; margin: 5px;"></div> </div>		Abuts Above Abutted by Below Bonded into Contiguous with (28374)			
INTERPRETATION Enclosing <u>Internal</u> External					
Reason for decay		NOT EXCAVATED - NUMBER ASSIGNED DURING DATA CURATION PROJECT.			
Indications of original dimensions					
Indications of original functions					
REMAINS OF A REPAIR TO WALL (34306) SPACE 11536 STRUCTURE 15258					
Associated contexts:					
Context Same As:					
Drawing Nos: 2007-186					
Photographs (feature in plan, elevation, materials used, surface treatment e.g. plaster, paint etc.)		Finds		Samples (flotation, wet sieve materials used e.g. bricks, stone, wood, bonding material etc.)	
Photograph No.	Description	Description	Artefact no.	Sample No.	Description
Phase:			Checked	Initials DCJ Date 08 APRIL 2013.	

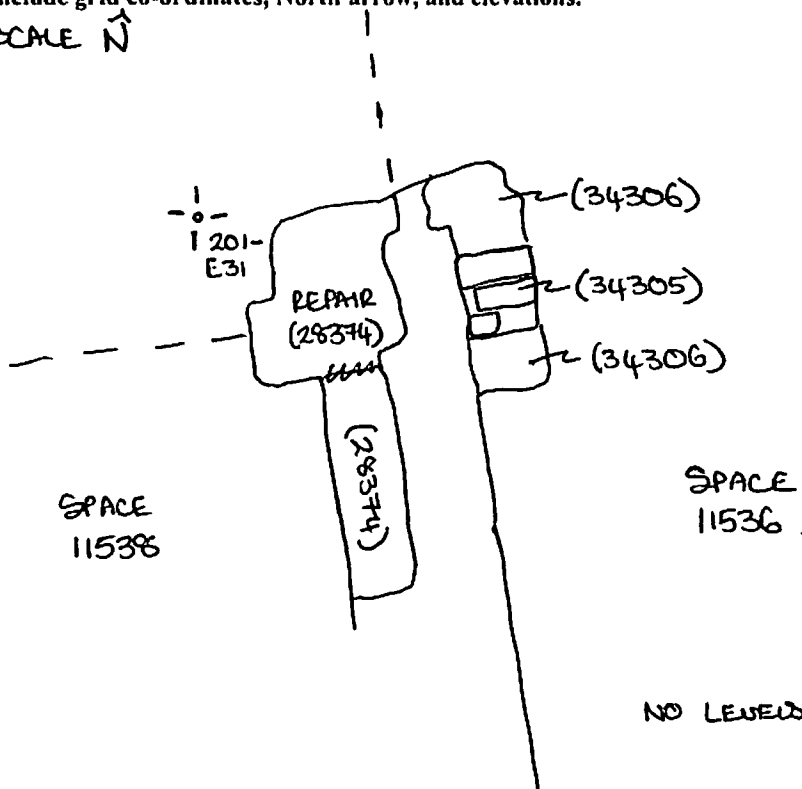
34305

Sketch Drawings (in plan and in profile)

Remember: do not just draw the architectural feature in isolation. Show how it relates to surrounding features and include details of surface treatments, repairs/modifications/damage, bonding material(s), and associated cuts. Annotate all aspects of the feature or use a Drawing Key. Measurements must be included for all aspects of the feature and surrounding features.

Sketch Plan - Include grid co-ordinates, North arrow, and elevations.

NOT TO SCALE N ↑



Profile Sketch

- State direction the elevation of the feature being drawn is facing e.g. 'West Facing Elevation of Feature
- If feature was drawn in section then include the grid co-ordinates and elevations.