

GPMP GIZA

Site: <b>SAPS 2/LFM</b> Area: <b>KKT-N</b>	GRID SQUARE(S) <b>201-E31, 201-F31</b>	ARCHITECTURE	FEATURE <b>34306</b>									
1. Material	<b>1) MUDBRICK</b>											
2. Size of materials	<b>2) 0.29m (L) X 0.16m (W) . FROM PLAN</b>											
3. Finish	<b>3) REGULAR</b>											
4. Coursing/bond	<b>4) 3 HEADERS USABLE .</b>											
5. Form	<b>5) WALL</b>											
6. Direction of faces	<b>6) NE, NW, SE .</b>											
7. Orientation	<b>7) NW/SE .</b>											
8. Dimensions	<b>8) 0.79m (L) X 0.29m (W) .</b>											
9. Associated collapse	<b>9) UNKNOWN</b>											
10. Founds, cuts & fills	<b>10) "</b>											
11. Repaired	<b>11) WITH (34305)</b>											
12. Associated floors	<b>12) UNKNOWN</b>											
13. Plastered	<b>13) "</b>											
14. Wall core	<b>14) "</b>											
15. Types of brick (%)	<b>15) "</b>											
16. Composition of bricks	<b>16) "</b>											
17. Dimensions of bricks (sample of three)	<b>17) "</b>											
Stratigraphic Matrix		Abuts	Above									
<table border="1" style="width:100%; height: 60px;"> <tr><td style="width:33%;"></td><td style="width:33%;"></td><td style="width:33%;"></td></tr> <tr><td style="width:33%;"></td><td style="width:33%; text-align:center;"><b>34306</b></td><td style="width:33%;"></td></tr> <tr><td style="width:33%;"></td><td style="width:33%;"></td><td style="width:33%;"></td></tr> </table>						<b>34306</b>					Abutted by	Below
	<b>34306</b>											
		Bonded into										
		Contiguous with	<b>(28374)(28392)</b>									
INTERPRETATION												
		Enclosing	<u>Internal</u>									
		External										
Reason for decay	<b>NOT EXCAVATED - NUMBER ASSIGNED DURING DATA</b>											
Indications of original dimensions	<b>CREATION PROJECT.</b>											
Indications of original functions												
<b>REMAINS OF THE ORIGINAL SW CORNER WALL OF SPACE 11536</b>												
<b>IN STRUCTURE 15258 .</b>												
Associated contexts:												
Context Same As:												
Drawing Nos: <b>2007-185, 2007-186</b>												
<b>Photographs</b> (feature in plan, elevation, materials used, surface treatment e.g. plaster, paint etc.)		<b>Finds</b>										
		Description	Artefact no.									
		<b>Samples</b> (flotation, wet sieve materials used e.g. bricks, stone, wood, bonding material etc.)										
Photograph No.	Description	Sample No.	Description									
		Phase:	Checked									
			Initials <b>DCJ</b> Date <b>03 APRIL 2013 .</b>									

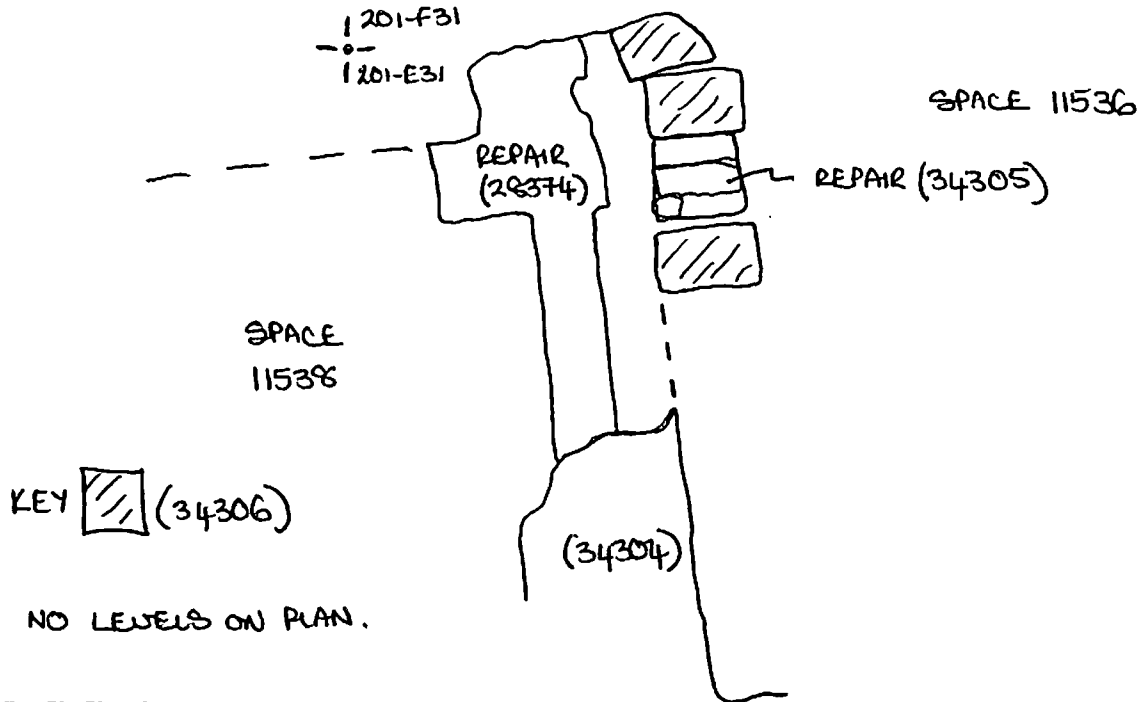
34306

**Sketch Drawings (in plan and in profile)**

Remember: do not just draw the architectural feature in isolation. Show how it relates to surrounding features and include details of surface treatments, repairs/modifications/damage, bonding material(s), and associated cuts. Annotate all aspects of the feature or use a Drawing Key. Measurements must be included for all aspects of the feature and surrounding features.

**Sketch Plan** - Include grid co-ordinates, North arrow, and elevations.

NOT TO SCALE 



**Profile Sketch**

- State direction the elevation of the feature being drawn is facing e.g. 'West Facing Elevation of Feature ....
- If feature was drawn in section then include the grid co-ordinates and elevations.