

GPMP GIZA

Site: <del>SATS 27/ L TM</del> Area: KKT-N	GRID SQUARE(S) 201-D28, 201-E28	ARCHITECTURE	FEATURE 34308
1. Material	1) MUDBRICK		
2. Size of materials	2) 0.36m (L) X 0.19m (W)		
3. Finish	3) REGULAR		
4. Coursing/bond	4) SINGLE ROW OF STRETCHERS		
5. Form	5) WALL		
6. Direction of faces	6) NE/SW		
7. Orientation	7) NW/SE		
8. Dimensions	8) 2.17m (L) X 0.19m (W)		
9. Associated collapse	9) UNKNOWN		
10. Founds, cuts & fills	10) "		
11. Repaired	11) "		
12. Associated floors	12) "		
13. Plastered	13) "		
14. Wall core	14) "		
15. Types of brick (%)	15) "		
16. Composition of bricks	16) "		
17. Dimensions of bricks (sample of three)	17) SEE #2.		
Stratigraphic Matrix			Abuts Above Abutted by Below Bonded into Contiguous with (27876)
INTERPRETATION	Enclosing	<u>Internal</u>	External
Reason for decay	NOT EXCAVATED - NUMBER ASSIGNED DURING		
Indications of original dimensions	DATA CURATION PROJECT. PREVIOUSLY LUMPED		
Indications of original functions	WITH WALL (27885) WHICH EXTENDS IN A DIFFERENT		
DIRECTION AND DUE TO THE SMALL SIZE OF BRICKS IS PROBABLY A REPAIR. REMAINS OF THE WESTERN WALL OF SPACE 11543 IN STRUCTURE 152587 THE BRICKS ARE SIMILAR SIZE TO THOSE OF (27876) AND I THINK THEY ARE ONE AND THE SAME BUILD.			
Associated contexts:			
Context Same As: (27876)			
Drawing Nos: 2007-46, 2007-47			
<del>Photographs (feature in plan, elevation, materials used, surface treatment e.g. plaster, paint etc.)</del>	<del>Finds</del>		<del>Samples (flotation, wet sieve, materials used e.g. bricks, stone, wood, bonding material etc.)</del>
<del>Photograph No. Description</del>	<del>Description</del>	<del>Artefact no.</del>	<del>Sample No. Description</del>
	Phase:	Checked	Initials DCJ Date 04 APRIL 2013.

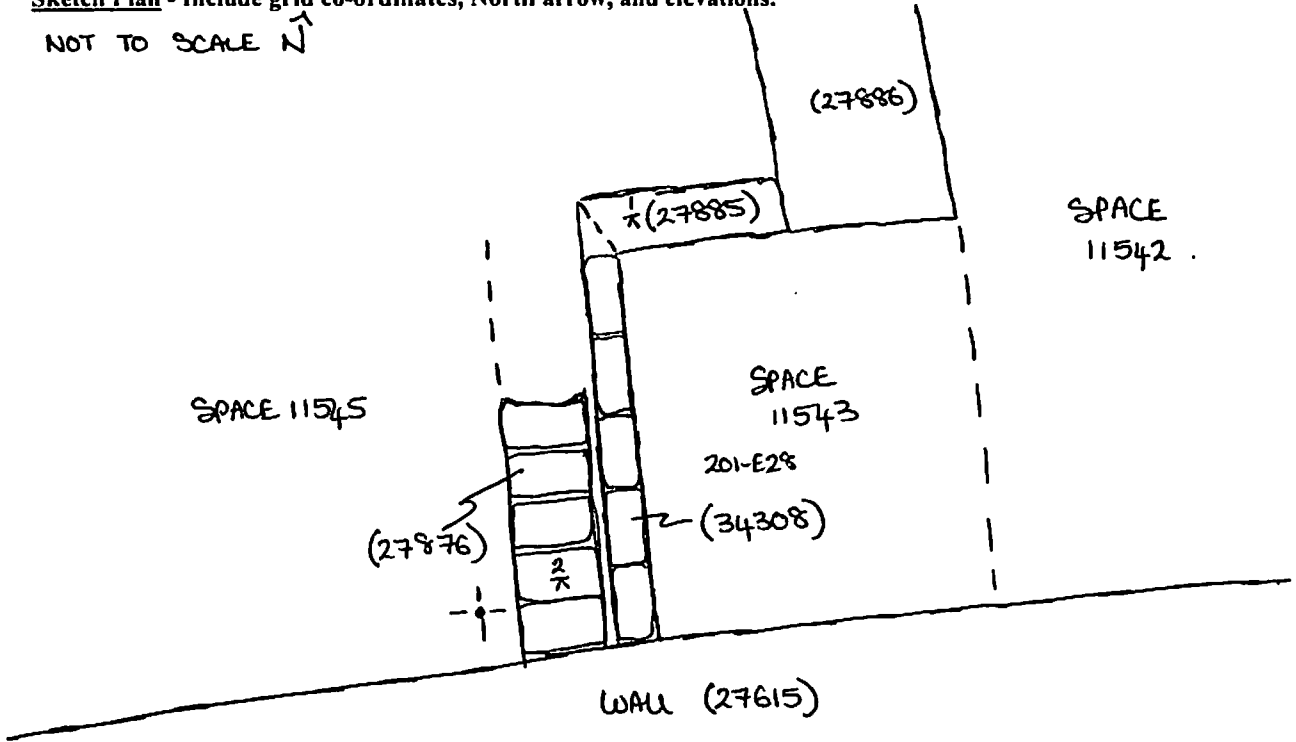
(34308)

**Sketch Drawings (in plan and in profile)**

Remember: do not just draw the architectural feature in isolation. Show how it relates to surrounding features and include details of surface treatments, repairs/modifications/damage, bonding material(s), and associated cuts. Annotate all aspects of the feature or use a Drawing Key. Measurements must be included for all aspects of the feature and surrounding features.

**Sketch Plan** - Include grid co-ordinates, North arrow, and elevations.

NOT TO SCALE  $\hat{N}$



**Profile Sketch**

- State direction the elevation of the feature being drawn is facing e.g. 'West Facing Elevation of Feature ....
- If feature was drawn in section then include the grid co-ordinates and elevations.

TBM: 21.38  
BB: 0.54  
IH: 21.92  
FS      RL  
1/0.90    21.02  
2/0.97    20.95.