

GPMP GIZA

Site: SAPS2/LTM Area: KKT-N.	GRID SQUARE(S) 201-E29	ARCHITECTURE	FEATURE 34316
1. Material 2. Size of materials 3. Finish 4. Coursing/bond 5. Form 6. Direction of faces 7. Orientation 8. Dimensions 9. Associated collapse 10. Founds, cuts & fills 11. Repaired 12. Associated floors 13. Plastered 14. Wall core 15. Types of brick (%) 16. Composition of bricks 17. Dimensions of bricks (sample of three)	<p>1</p> <p>7) NW/SE</p> <p>8) 0.70m (L) X 0.17m (W)</p>		
Stratigraphic Matrix			Abuts Above Abutted by Below Bonded into Contiguous with
INTERPRETATION	Enclosing	(Internal)	External
Reason for decay	NOT EXCAVATED - NUMBER ASSIGNED DURING DATA CREATION		
Indications of original dimensions	PROJECT, POSSIBLE WALL SEGMENT ASSOCIATED WITH		
Indications of original functions	(27896) AND OR (27902), CUT BY [34317] & [34318]		
SPACE 11542, STRUCTURE 15257.			
Associated contexts:			
Context Same As:			
Drawing Nos: 2007-50			
Photographs (feature in plan, elevation, materials used, surface treatment e.g. plaster, paint etc.) Photograph No. Description	Finds Description Artefact no.		Samples (flotation, wet sieve, materials used e.g. bricks, stone, wood, bonding material etc.) Sample No. Description
	Phase:		Checked
		Initials DCJ Date 09 APRIL 2013	

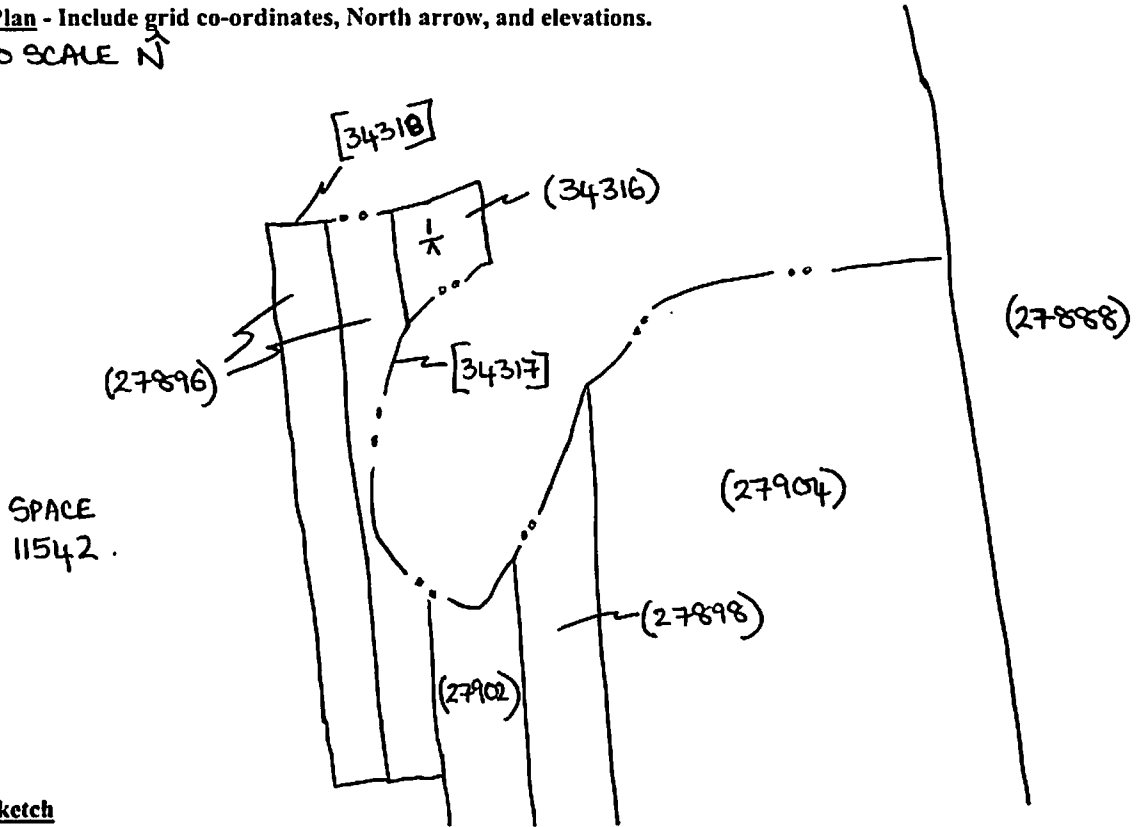
(34316)

Sketch Drawings (in plan and in profile)

Remember: do not just draw the architectural feature in isolation. Show how it relates to surrounding features and include details of surface treatments, repairs/modifications/damage, bonding material(s), and associated cuts. Annotate all aspects of the feature or use a Drawing Key. Measurements must be included for all aspects of the feature and surrounding features.

Sketch Plan - Include grid co-ordinates, North arrow, and elevations.

NOT TO SCALE \uparrow



Profile Sketch

- State direction the elevation of the feature being drawn is facing e.g. 'West Facing Elevation of Feature
- If feature was drawn in section then include the grid co-ordinates and elevations.

TBM: 21.38
BS: 0.52
IH: 21.90
FS RL
 $\frac{1}{x}$ 1.07 20.83 .

201-E29
-0-
|