

GPMP GIZA

Site: SAPS 2/L7A Area: KKT-N	GRID SQUARE(S) 201-E26	ARCHITECTURE	FEATURE 34337
1. Material	1) MUDBRICK		
2. Size of materials	2) 0.27m (L) X 0.08m (W) FROM PLAN		
3. Finish	3) REGULAR		
4. Coursing/bond	4) SINGLE ROW OF HEADERS		
5. Form	5) REPAIR TO (WALL)		
6. Direction of faces	6) NW & SW		
7. Orientation	7) NE SW & NW SE.		
8. Dimensions	8) 2.42m (L) X 0.27m (W)		
9. Associated collapse	9) UNKNOWN		
10. Founds, cuts & fills	10) "		
11. Repaired	11) "		
12. Associated floors	12) "		
13. Plastered	13) "		
14. Wall core	14) POSSIBLY (34338)		
15. Types of brick (%)	15) UNKNOWN BUT POSSIBLY THE LITTLE BROWN BUENT BRICKS		
16. Composition of bricks	16) "		
17. Dimensions of bricks (sample of three)	17) SEE #2.		
Stratigraphic Matrix			Abuts Above Abutted by Below Bonded into Contiguous with
INTERPRETATION	Enclosing	<u>Internal</u>	External
Reason for decay	NOT EXCAVATED - NUMBER ASSIGNED DURING DATA		
Indications of original dimensions	CREATION PROJECT.		
Indications of original functions			
PREVIOUSLY LUMPED TOGETHER WITH (27637) & (27638) BUT DUE TO THE SMALL BRICK SIZE THIS SEGMENT PROBABLY REPRESENTS A REPAIR TO THE TWO AFOREMENTIONED WALLS.			
SPACE: 11551			
STRUCTURE: 15256			
Associated contexts:			
Context Same As:			
Drawing Nos: 2007-37			
Photographs (feature in plan, elevation, materials used, surface treatment e.g. plaster, paint etc.) Photograph No. Description	Finds Description Artefact no.		Samples (notation, wet sieve, materials used e.g. bricks, stone, wood, bonding material etc.) Sample No. Description
	Phase:		Checked
		Initials DCS Date 13 APRIL 2013	

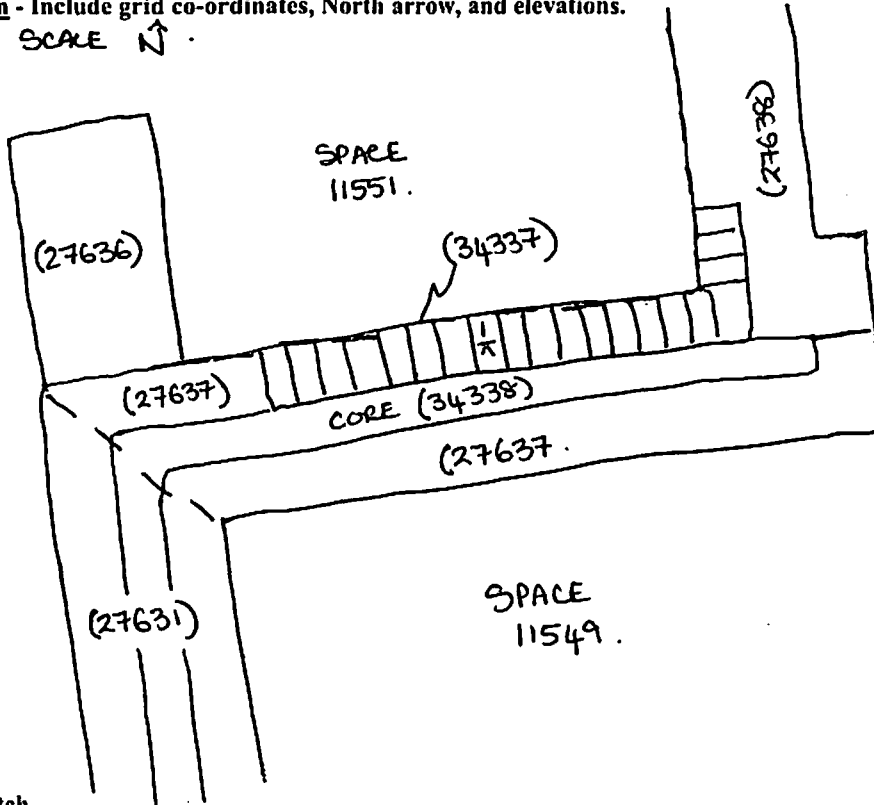
(34337)

Sketch Drawings (in plan and in profile)

Remember: do not just draw the architectural feature in isolation. Show how it relates to surrounding features and include details of surface treatments, repairs/modifications/damage, bonding material(s), and associated cuts. Annotate all aspects of the feature or use a Drawing Key. Measurements must be included for all aspects of the feature and surrounding features.

Sketch Plan - Include grid co-ordinates, North arrow, and elevations.

NOT TO SCALE \uparrow



T&M: 23.26
BS: 0.56
IH: 23.82
FS EL
1/4 2.12 21.70

201-E26 1
- 0 -

Profile Sketch

- State direction the elevation of the feature being drawn is facing e.g. 'West Facing Elevation of Feature ↓'.
- If feature was drawn in section then include the grid co-ordinates and elevations.