

GPMP GZA

Site: SATS 2 / LFM Area: KLT-N.		GRID SQUARE(S) 201-D26, 201-E26	ARCHITECTURE	FEATURE 34339									
1. Material	1) UNKNOWN												
2. Size of materials	2) "												
3. Finish	3) "												
4. Coursing/bond	4) N/A												
5. Form	5) WALL CORE												
6. Direction of faces	6) N/A												
7. Orientation	7) NW/SE												
8. Dimensions	8) 3.06m (L) X 0.15m (W)												
9. Associated collapse	9) UNKNOWN												
10. Founds, cuts & fills	10) "												
11. Repaired	11) N/A "												
12. Associated floors	12) "												
13. Plastered	13) N/A												
14. Wall core	14) "												
15. Types of brick (%)	15) UNKNOWN												
16. Composition of bricks	16) "												
17. Dimensions of bricks (sample of three)	17) "												
Stratigraphic Matrix		Abuts Above											
<table border="1"> <tr> <td></td> <td></td> <td></td> </tr> <tr> <td></td> <td>34339</td> <td></td> </tr> <tr> <td></td> <td></td> <td></td> </tr> </table>						34339					Abutted by Below		
	34339												
		Bonded into											
		Contiguous with											
INTERPRETATION		Enclosing <u>Internal</u> External											
Reason for decay		NOT EXCAVATED - NUMBER ASSIGNED DURING DATA											
Indications of original dimensions		CORRECTION PROJECT.											
Indications of original functions		DRAWN BUT NOT NUMBERED.											
CORE OF WALL (27631)													
SPACE: 11548, 11549, 11552													
STRUCTURE: 15256													
Associated contexts:													
Context Same As: (34338)													
Drawing Nos: 2007-37, 2007-38													
Photographs (feature in plan, elevation, materials used, surface treatment e.g. plaster, paint etc.)		Finds		Samples (Notation, wet sieve, materials used e.g. bricks, stone, wood, bonding material etc.)									
Photograph No.	Description	Description	Artefact no.	Sample No.									
				Description									
		Phase:	Checked	Initials DCJ Date 13 APRIL 2013									

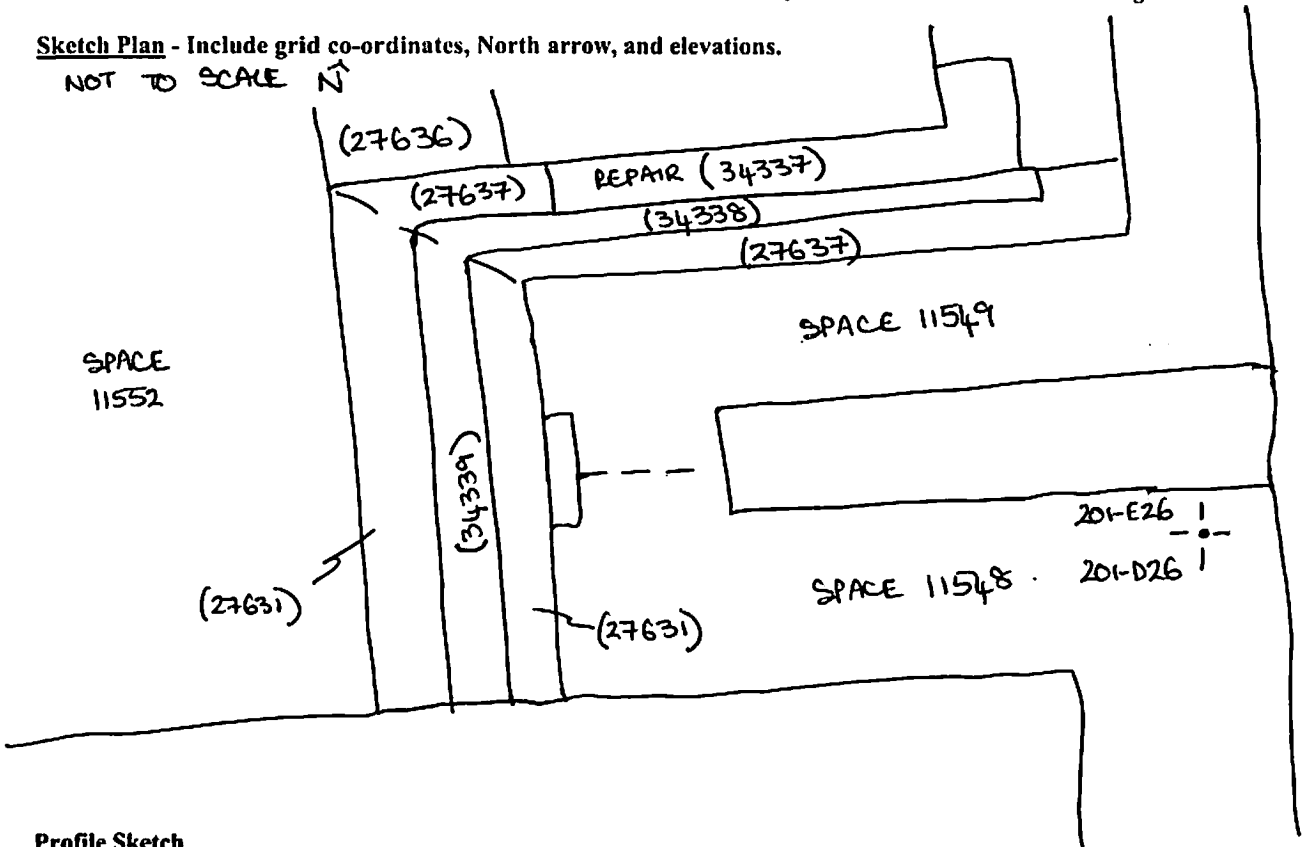
(34339)

Sketch Drawings (in plan and in profile)

Remember: do not just draw the architectural feature in isolation. Show how it relates to surrounding features and include details of surface treatments, repairs/modifications/damage, bonding material(s), and associated cuts. Annotate all aspects of the feature or use a Drawing Key. Measurements must be included for all aspects of the feature and surrounding features.

Sketch Plan - Include grid co-ordinates, North arrow, and elevations.

NOT TO SCALE N ↑



Profile Sketch

- State direction the elevation of the feature being drawn is facing e.g. 'West Facing Elevation of Feature ...
- If feature was drawn in section then include the grid co-ordinates and elevations.