



34351

Sketch Drawings (in plan and in profile)

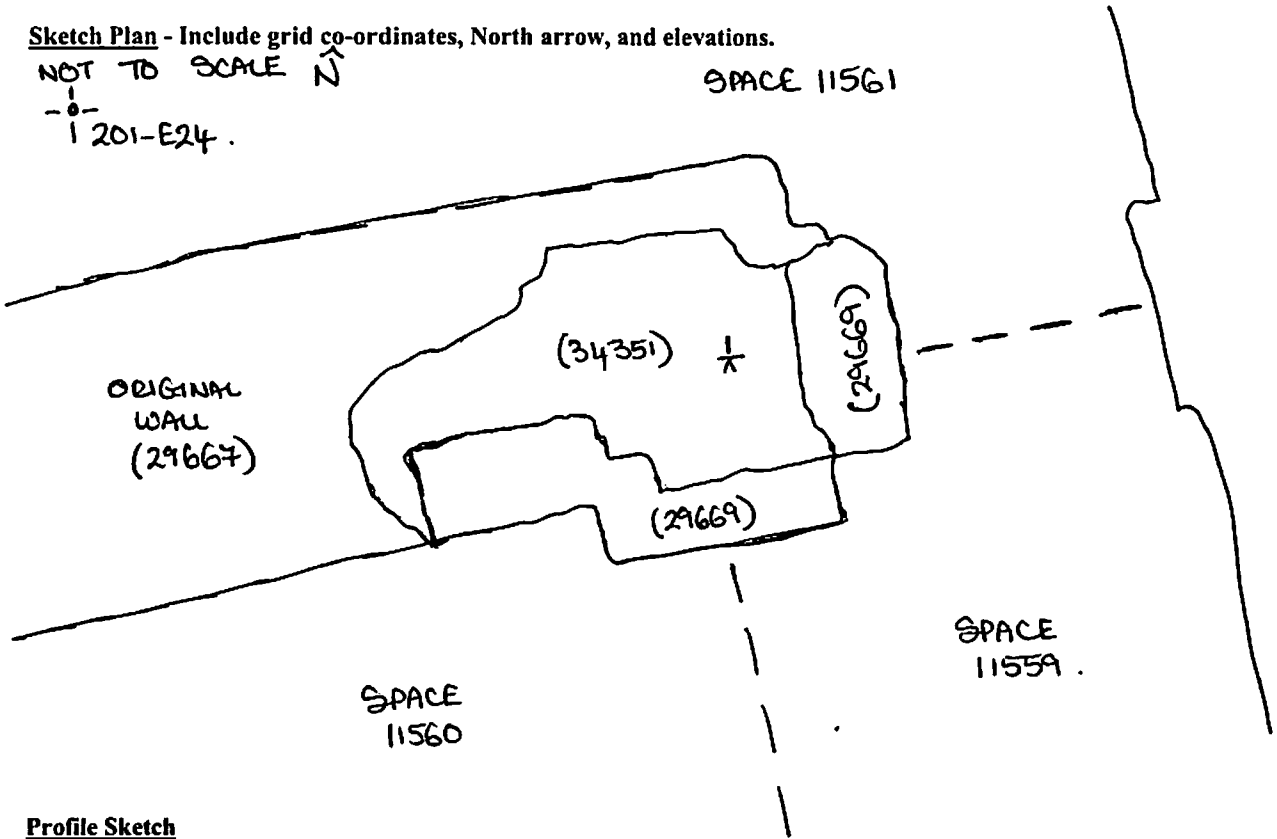
Remember: do not just draw the architectural feature in isolation. Show how it relates to surrounding features and include details of surface treatments, repairs/modifications/damage, bonding material(s), and associated cuts. Annotate all aspects of the feature or use a Drawing Key. Measurements must be included for all aspects of the feature and surrounding features.

Sketch Plan - Include grid co-ordinates, North arrow, and elevations.

NOT TO SCALE  $\hat{N}$

-0-  
| 201-E24 .

SPACE 11561



Profile Sketch

- State direction the elevation of the feature being drawn is facing e.g. 'West Facing Elevation of Feature ....
- If feature was drawn in section then include the grid co-ordinates and elevations.

ONLY REDUCED LEVEL WRITTEN ON PLAN .

$\frac{1}{8}$  RL  
22.80