

Locus L 18018	Dor 1974	Fld 6	Sq A131	Loc. type MUDBRICK FILL ON FLOOR		
Open 08/17/74	Date	High at 13.11	at SE	Low at 13.96	at N	Seals: _____
Close 13/17/74		High at 13.13	at SE	Low at 12.95	at C	Sealed by: _____
Floor: type CP		High at 13.11	at SE	Low at 12.95	at C	Loci L9966 L18002 _____
Length 1.2	Width 3.8	Vol _____				above _____
Value N	Remove 13/17/74	Drawn? YES				below _____
Photo #(1) 117305		Photo #(2) 117307				Loci L18025 _____
Written by: JCM		Checked by: JRZ				below _____

Unit _____	Phase _____	Stage _____	Stratum _____	PoM _____
------------	-------------	-------------	---------------	-----------

Summary _____

Opened: CAME DOWN ON FLOOR WHILE DIGGING U8002. CHANGED TO L18018 AS FLOOR MATRIX AND FILL BELOW. ALSO REACH LEVEL OF L9966 TO THE NORTH

Limits (N) L18009
 (S) W9715
 (E) BAULK
 (W) W9964

Closed: CAME DOWN ON A DIVING EXTENSION OF F18002. THE ORIGINAL PIECE OF FLOOR WAS RENUMBERED AS F18018. THE FLOOR MATRIX AND FILL ^{below} BECAME L18002

Matrix: DENSE DARK BROWN MUDBRICK DEBRIS. SAME SOIL AS L18002 ABOVE, AND L9966 AND L18009 TO THE NORTH

Relations: L18002 IS THE SAME DEPOSITIONAL UNIT AS L18018 BELOW L18018 IS MUDBRICK DEBRIS REACHING W9964 TO THE WEST, AND W9715 TO THE SOUTH. L18018 COMES DOWN ON F1808 WHICH COVERS BUT DOES NOT SEAL L18025.

F18002 was found at a higher level to the South than to the North. A portion of it was traced out to the South. L18002 was closed and L18018 opened below L18002 and L9966. Patches of F18002 were then found to the North in L18018. Since larger patches were found in L18018 than in L18002 the floor was renumbered as F18018. F18018 slopes up from North to South and seems to reach (or runs below?) the base of the last stone course of W9715; the floor may cover an earlier (lower) mudbrick phase of W9715, but this is uncertain.

Additional Observations/Value: MUDBRICK DEBRIS DOWN TO FLOOR. LOW VALUE.

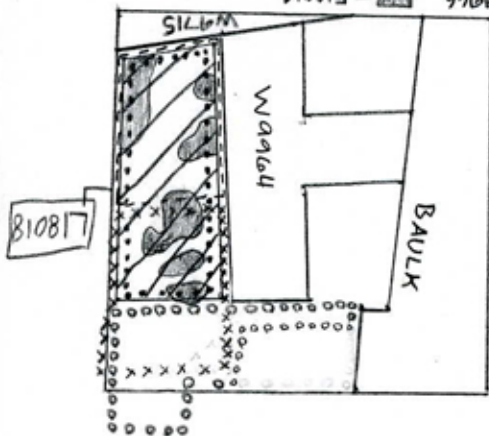
Locus

810817

Sketch plan

810817 - [diagonal lines]
000 - L18009
--- L18007
--- L18001
XXX - L9966

810817 - ...
--- L18005
--- L18018
XXX - L9966



Section



Section