

Locus L 18079	Dor 19 ₆	Fld 6 ₁	Sq A1333	Loc. type Floor Make-up and fill below
Open 01/08/94	Date	High at 13.514 S ₁	Low at 13.314 N _{1E}	Seals: _____
Close 02/08/94		13.317 N ₁	13.310 N _{1E}	Sealed by: 18063
Floor: type				Loci 18062 18063
Length 2.7	Width 2.7	Vol		above _____
Value S ₁	Remove / /	Drawn? N ₁₀₁		below _____
Photo #(1)	Photo #(2)			Loci _____
Written by: JRS	Checked by: JRS			below _____

Unit	Phase 8	Stage	Stratum	PoM
-------------	----------------	--------------	----------------	------------

Summary

Opened: Came down on F18063 in L18063, which continued below L18062, [L18079] opened to include make-up of F18063 and fill below.

Limits (N) Bounded by the unexcavated material below W9015, L9604 and W9510 to the N.

(S) Bounded by W9400 and the unexcavated material below W9066 to the South.

(E) Bounded by the unexcavated material below W914 to the East.

(W) Bounded by W9975 and the unexcavated material below W9147 and L9663 to the West.

Closed: End of season, not closed.

Matrix: Compact grey ashy material with charcoal flecks containing some pottery with little bone or shell in the western two-thirds of the locus, sandy brown mudbrick material with much pottery bone and shell. F18063 is a grey ashy surface with some charcoal flecks on it.

Relations: [L18079] is covered by L18062 and L18063. F18063, which extends below L18062, covers and seals all of [L18079]. [L18079] reaches W9400 to the South and W9975 to the West. The material of [L18079] continues into the unexcavated materials below W9066 to the South, W914 to the East, W9510, L9604 and W9510 to the North, and W9147 and L9663 to the West. W9975 may extend further North below W9147, in which case [L18079] would reach W9975 in this area also, but this relationship requires further excavation for clarification. [L18079] will need to be split into two new loci to account for the differences in matrix noted at the end of season if excavated in future seasons. [L18079] is of a similar matrix and level as L9922 and L9954 below L9922 in SAJ33 (excavated '93 season). Together these loci may represent some sort of pit cut by walls W914 and W9400, in which case Floors F18065 and F18063 may be merely surfaces in this pit. W9975 may also cut this large hypothetical Iron Age pit.

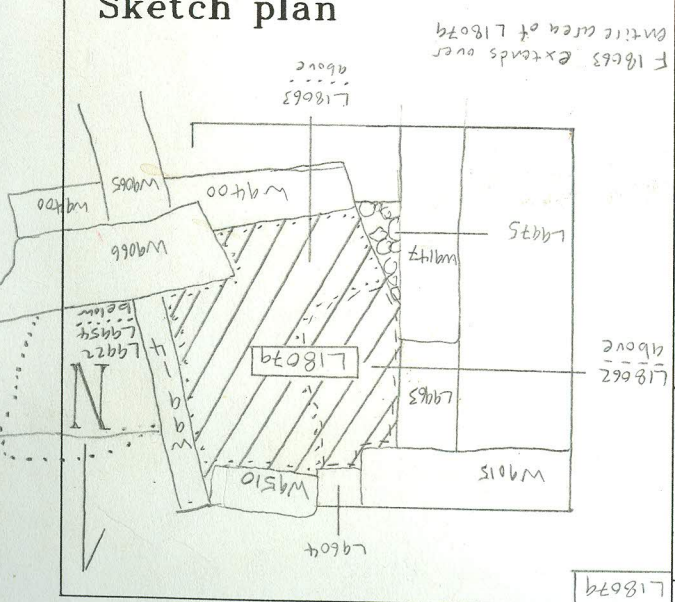
IS 08: beneath lowest phase 7 floor

Additional Observations/Value: Sealed deposit reaching Phase 7 wall.
Possible pit??? High Value.

Locus

L 18079

Sketch plan



Photo

Photo

Section

Section