

Locus L18082	Dor 1994	Fld 6	Sq A1132	Loc. type Basin INSTALLATION
Open Date 03/08/94	High at 12.09	IN	Low at 12.03	Seals: _____
Close Date 05/08/94	High at 12.04	S	Low at 12.02	Sealed by: _____
Floor: type Length 0.2	Width 0.6	Vol	Drawn? YES	Loci L18070 above _____
Value IS	Remove 05/08/94	Drawn? YES		Loci L18091 below _____
Photo #(1) 117936	Photo #(2) 117937			
Written by: JCM	Checked by: JRZ			

Unit _____	Phase _____	Stage _____	Stratum _____	PoM _____
------------	-------------	-------------	---------------	-----------

Summary _____

Opened: CAME DOWN ON LOWEST PART OF PLASTERED BASIN WHILE EXCAVATING L18070. SPLIT TO L18082, THE BASIN AND L18083, THE AREA TO THE WEST, THE EASTERN AREA CAME
 Limits (N) BAULK UNDER F9795 DOWN ON F18070 SOON AFTER
 (S) L18070
 (E) L18070
 (W) L18083

Closed: REMOVED BASIN [L18083] AND CAME DOWN ON F18070. COLLAPSED ENTIRE AREA TO L18091 AS FLOOR MATRIX AND FILL BELOW.

Matrix: WHITE PLASTER LAYER LINED ON THE EAST SIDE BY A ROW OF DOUBLE FIRST SIZED FIELD STONES. SIDE OF BASIN APPEARS IN THE WEST BAULK BESEDE W804 (12.32cm - 12.08cm)

Relations: [L18082] IS MOST LIKELY A PLASTER LINED BASIN CUT FROM F18051 (F18051 IS AT THE SAME LEVEL AS THE TOP OF THE SECTION OF BASIN IN THE BAULK). THUS [L18082] CUTS L18070 TO THE EAST AND SOUTH, AND THE FIRST OF FIVE SURFACING OF F18070. [L18083] TO THE EAST OF [L18082] IS BADLY DAMAGED MATERIAL OF F18070 (L18090). L18083 WAS PROBABLY DAMAGED BY THE CUTTING ACTION OF [L18082]. [L18082] THUS CUTS [L18083] AS WELL. [L18083] ALSO CUTS INTO L18091, THE FLOOR MAKEUP

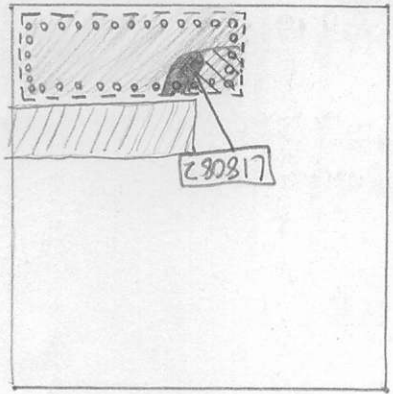
ADDITIONAL PHOTOS: 117938-117942
 Additional Observations/Value: PLASTER BASIN CUTTING PART OF A FLOOR. MEDIUM VALUE.

P1 P2 P3

Locus
L18082

Sketch plan

- L18081 - [diagonal lines]
- L18082 - [cross-hatch]
- L18083 - [diagonal lines]
- L18084 - [diagonal lines]
- L18085 - [diagonal lines]
- L18086 - [diagonal lines]
- L18087 - [diagonal lines]
- L18088 - [diagonal lines]
- L18089 - [diagonal lines]
- L18090 - [diagonal lines]
- L18091 - [diagonal lines]
- L18092 - [diagonal lines]
- L18093 - [diagonal lines]
- L18094 - [diagonal lines]
- L18095 - [diagonal lines]
- L18096 - [diagonal lines]
- L18097 - [diagonal lines]
- L18098 - [diagonal lines]
- L18099 - [diagonal lines]
- L18100 - [diagonal lines]

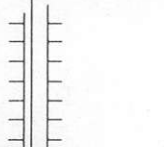


Photo

Photo

Section

Section



Locus LJ 18082 **Dor** 1918 **Fld** G1 **Sq** A1, B1 **Loc. type** INSTALLATION (CONTINUATION CARD)
Open 02/07/98 **Date** **High** at **Low** at
09/08/98 12.18 CL 12.04 WL
Floor: type **Width** **Remove** **Drawn?** YES
0.5 1.18 CL 12.04 WL
Length 0.5 **Vol** 18289
Value 1.5 **Remove** 1.1

Photo # (1) 175179 **Photo #** (2) 175180
Written by: KVA **Checked by:** JRZ
Unit **Phase** **Stage** **Stratum** **PoM**

Summary

Opened: START OF THE SEASON / WE'VE DISCOVERED NORTH PART OF [L18082] W/ISE REMAINS
OFF-SEASON DEBRIS

Limits (N) L 18289
(S) L 18289
(E) L 18289
(W) L 18289
Closed: NOT CLOSED, REMAINS IN BALK BETWEEN AF 30 - AF 31

Matrix: [L18082] CONSISTS OUT OF WHITE CLAY MATERIAL FORMED IN THE HALF OF A BOWL WITH A SLOPE OF APPROXIMATELY 30° WHICH IS LEANING AGAINST A 2' FISTIZED STAGE IN THE NORTH
FROM E-W
hard

Relations:
TO THE NORTH, SOUTH, WEST AND EAST: [L18082] SITS ON TOP OF F 18289, THOUGH SEPARATED BY A FEW CM
THE PART OF THE INSTALLATION [L18082] THAT WAS UNCOVERED THIS YEAR CONTAINS INTER OF ALL
FORMER UNCOVERED PARTS, SITUATED TO THE SOUTH (SEE PREVIOUS CARDS).
THIS RELATION HAS THE CONSEQUENCE THAT F 18289 EQUALS A FLOOR IN AF 31, TO ITS
MOST SOUTHERN EXTENSION (⇒ F 18289 EQUALS F 18070 ?)
 * WAS THIS A HEARTH TO HEAT CRUCIBLES? (THE SIZE MATCHES OTHER EXAMPLES)
(= VAN STEENHOUSE POT?)
(SEE ALSO CARD FOR L18313)

PoM

Stratum

Stage

Phase

Unit

Summary

Opened: START OF THE SEASON / WE'VE DISCOVERED MOST PART OF [L18289] WHITE REMAINS

OFF-SEASON DEBRIS

Limits (N) L 18289

(S) L 18289

(E) L 18289

(W) L 18289

Closed: NOT CLOSED, REMAINS IN TALK BETWEEN AT 30 - AT 31

Matrix: [L18289] CONSISTS OUT OF WHITE CLAY MATERIAL FORMED IN THE WALK OF A BOULDER, WITH A SLOPE OF APPROXIMATELY 30°, WHICH IS LEANING AGAINST A DISTURBED STRIKE IN THE NORTH

Relations:

TO THE NORTH, SOUTH, WEST AND EAST: [L18280] SITS ON TOP OF F18289, THOUGH SEPARATED BY A FEW CM. THE PART OF THE INSTALLATION [L18282] THAT WAS UNCOVERED THIS YEAR CONTAINS INTER-OF-FILL FORMER UNCOVERED PARTS, SITUATED TO THE SOUTH (SEE PREVIOUS CARDS). THIS RELATION HAS THE CONSEQUENCE THAT F18289 EQUALS A FLOOR, IN THE 31, TO ITS MOST SOUTHERN EXTENSION (⇒ F18289 EQUALS F18270?)

* WAS THIS A HEARTH TO HEAT CRUCIBLES? (THE SIZE MATCHES OTHER EXAMPLES) (= VANSTEENHOUSEPUT?) (SEE ALSO CARD FOR L18313)

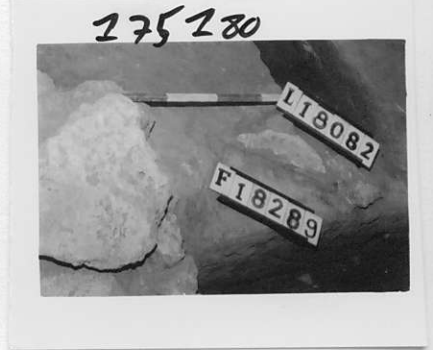
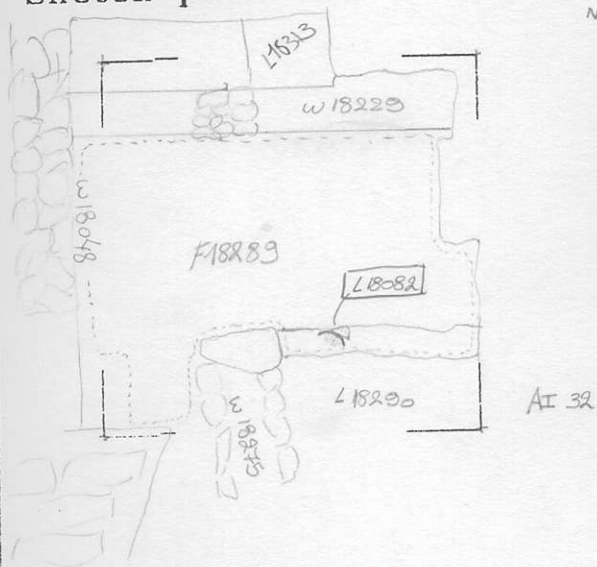
Additional Observations/Value: IMPORTANT VALUE (HEARTH FOR CRUCIBLE?)

Locus
L 18082

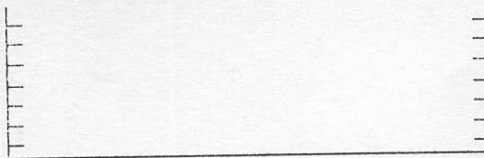
Sketch plan

1/100

↑
N



Section



Section

