

Locus L18087 Dor 1994 Fld G1 Sq A11, A13, B11 Loc. type Destruction layer to stone pavement

Date 03/08/94 High 13.23 Low 13.12 at NW
 Open 05/08/94 13.04 12.80 at SL
 Close 05/08/94 13.04 12.80 at SL
 Floor: type C/E Width 1.5 Vol 11.0
 Length 2.0 Remove No / 1 Drawn? 101
 Value 14

Photo #(1) Photo #(2)
 Written by: CAB Checked by: JAZ

Unit	Phase	Stage	Stratum	PoM

Summary

Opened: Opened L18087 when L18055, L18056 and L18057 reached the destruction "layer". They were collapsed to form L18087.

Limits (N) W9262 'S bank / pedestal
 (S) L18061 + L18068
 (E) L18090
 (W) W18048

Closed: Reached stone pavement across entire area - closed @ end of season.

Matrix: Brown compact earth with copious amounts of charcoal and destruction debris mix, isolated to southern area. F18087 is a stone pavement with a white plaster coating, covering + sealing the interstices of the rocks.

Relations: Above L18087; L18055 (pavement making + fill below) and L18057 + L18056 were collapsed when they reached the different matrix of brown earth w/ charcoal - i.e. destruction. To the north, L18087 continues into the pedestal below W9262, F18087 also continues into pedestals to the south, L18087 continues in stratigraphic relation to L18061 and L18068, though their matrices are ^{F18055} different. F18087 continues into F18061 and F18068.

To the west F/L18087 reaches W18048

To the east F/L18087 continues into L18090.

When F18087 was defined, the locus was closed due to end of season.

not excavated below.

see 152A

unsealed by F1805

Unit	Phase	Stage	Stratum	PoM
Summary				

Opened: Opened L18087 when L18055, L18056 and L18057 reached the "destruction" layer. They were collapsed to form L18087.

Limits (N) W9262 is bank / pedestal
 (S) L18061 + L18068
 (E) L18090
 (W) W18048.

Closed: Reached stone pavement across entire area - closed @ end of season.

Matrix: Brown compact earth with copious amounts of charcoal and destruction debris mix, isolated to southern area. F18087 is a stone pavement with a white plaster coating covering + sealing the interstices of the rocks.

Relations: Above L18087; L18055 (pavement makeup + fill below) and L18057 + L18056 were collapsed when they reached the different matrix of brown earth w/ charcoal - i.e. destruction. To the north, L18087 continues into the pedestal below W9262, F18087 also continues into pedestal. To the south, L18087 continues in stratigraphic relation to L18061 and L18068, though their matrices are ^{unsealed by F18055} different. F18087 continues into F18061 and F18068.

To the west F/L18087 reaches W18048.
To the east F/L18087 continues into L18090.
When F18087 was defined, the locus was closed due to end of season.
Not excavated below.

Additional Observations/Value: High value. The third iron age pavement superimposed in Area G. No parallel to any other area in Non-Age Area G.
Also that F18087 = F18061 = F18068 = F18090 All reaching the installation L9982.

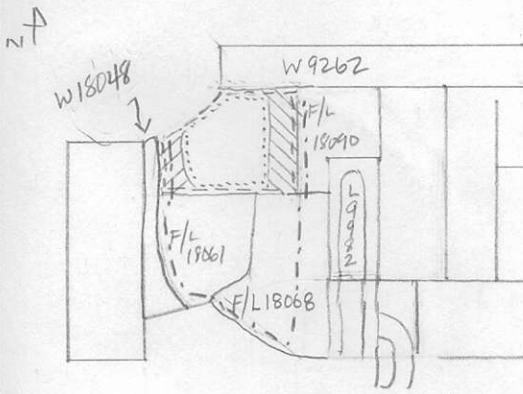
1b
 2 u 1r1
 u
 2 s
 u

LOCUS

L 181987

--- L18035 L18055 + L18056 + L18057 = L18087 below = ---
 F18035 → L18055 below
 // L18057
 \ L18056

Sketch plan 1:100



Photo

Photo

Section

Section

