

Locus L18215	Dor 1917	Fld G	Sq AJ32	Loc. type Floor maceup and fill below
Open 17/07/17	High 12.53	at W	Low 12.42	at E
Close 215/07/17	High 12.37	at E	Low 12.14	at W
Floor: type CIP	High 12.37	at E	Low 12.14	at W
Length 3.5	Width 4.5	Vol	Drawn? Yes	
Value 2id	Remove	Drawn? Yes		
Photo #(1) 166757	Photo #(2) 166758	Loci 18269		
Written by: JCM	Checked by: JRZ	below		

Unit	Phase	Stage	Stratum	PoM
------	-------	-------	---------	-----

Summary

Opened: Began excavation in the area below F18216 = F9832 to see predestruction levels

Limits (N) L18221

(S) Balk

(E) L18244

(W) L18214

Closed: Realized we had mixed materials from both pre-destruction, and destruction layers because of the dramatic slope westwards in destruction F18016.

Matrix: Sandy tan loose material to the east, and mudbrick debris with charcoal to the west.

Relations: Above: L9832 comes down on F18216 which mostly covers L18215, but does not seal it

North: L18215 continues into destruction L18061 above and predestruction L18234 below.

South: L18215 continues into the balk.

East: This side of L18215 partially continues into L18244, which is below the floor *

West: This side of L18215 continues into destruction L18214

Below: L18215 covers but does not seal L18269.

L18215 is equivalent to destruction F18061. Because it slopes downwards to the west so dramatically, L18215 contains both destruction material above L18215, and predestruction material to the east. L18215 slopes/continues through L18214 into L18242. When excavation of L18215 was begun it was believed we were going through the destruction floor; only later did we realize that floors contemporary with the AJ32 destruction floor were at a lower level in AJ32 and that the area of L18215 and L18214 was where this sloping transition took place

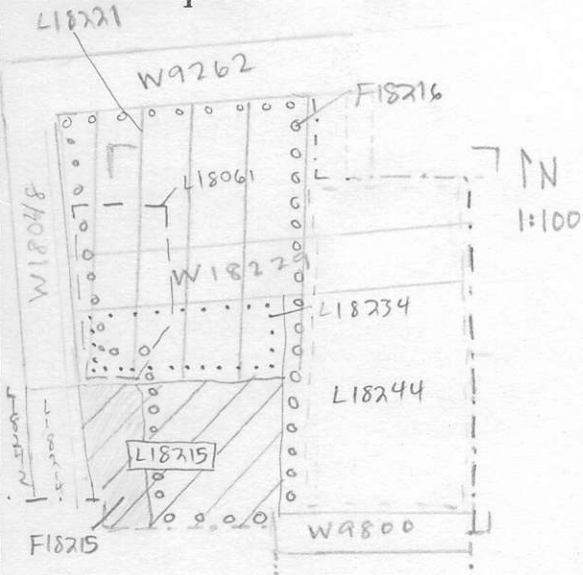
Additional Photos: 166759

Additional Observations/Value: Low Value, Disturbed Locus.

Locus

L 1,8,2,1,5

Sketch plan



Photo

Photo

Section

Section

