

<b>Locus</b> L18217	Dor 1917	Fld G	Sq A137	Loc. type Floor make-up + fill below
Open 10/07/17	High at 12.83	N	Low at 12.55	Seals: 18243 18244 18229
Close 18/07/17	12.59	E	12.48	Sealed by:
Floor: type	Width 3.0		Vol	Loci 18217 18058 18072 9795
Length 2.2	Remove		Drawn?	above
Value 1				below
Photo #(1)	Photo #(2)			Loci 18243 18244 18229
Written by: JCM	Checked by: JAZ			below

Unit	Phase	Stage	Stratum	PoM
------	-------	-------	---------	-----

Summary

Opened: Began season and began to excavate below [F18058]

Limits (N) W9262, Balk  
 (S) L18051, L18220  
 (E) Balk  
 (W) L18221

Closed: Came down on possible extension of W18229. Separated to L18243 north of W18229, and L18244 south. Collapsed L18220 into L18244

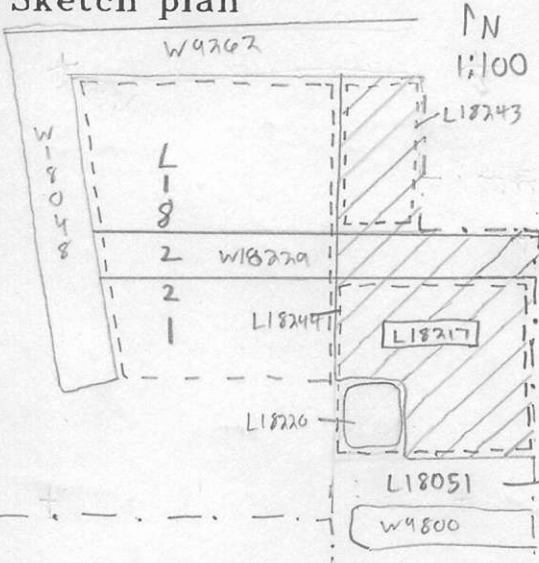
Matrix: Ashy white surface with a number of resurfacings (5-6). Between surfaces, mud brick debris was found (possibly used for leveling). Thickness of floor resurfacings was ca. 10-12 cm; F18058 is actually last resurfacing in this room.

Relations:  
 Above: L18058 = 18072 = 9795 = 18075 seal [L18217] via F18058 = 18072 = 18075 = 9795.  
 North: [L18217] reaches W9262 and continues into the balk to the NE.  
 South: [L18217] continues into L18051.  
 East: [L18217] continues into the balk.  
 Below: [L18217] comes down on W18229 and continues down into L18243 (north) and L18244 (south).  
 West: Continues under installation L9872 into L18221.  
 Continues south west of L18221.

Additional Observations/Value: High Value. Material below destruction.

LOCUS  
L 18217

Sketch plan



Photo

Photo

Section

Section

