

Locus <u>L 18221</u>	Dor <u>1917</u>	Fld <u>G</u>	Sq <u>A132/A133</u>	Loc. type <u>EMU, Fill to floor</u>
Open <u>11/07/97</u>	High <u>12.90</u>	at <u>NE</u>	Low <u>12.58</u>	at <u>S</u>
Close <u>16/07/97</u>	<u>12.72</u>	<u>NE</u>	<u>12.63</u>	<u>NE</u>
Floor: type <u>clp</u>	<u>12.72</u>	<u>NE</u>	<u>12.63</u>	<u>M</u>
Length <u>4.0</u>	Width <u>2.2</u>	Vol <u> </u>	Drawn? <u>Yes</u>	
Value <u>S</u>	Remove <u>/ / /</u>			
Photo #(1) <u>166408</u>	Photo #(2) <u>166409</u>			
Written by: <u>JEM</u>	Checked by: <u>JRZ</u>			

Unit	Phase	Stage	Stratum	PoM
------	-------	-------	---------	-----

Summary

Opened: While excavating L18216 we came down on F18216. Changed to L18221 north of unsealed and possibly disturbed L18215.

Limits (N) W9262
 (S) L18215
 (E) L18217
 (W) W18048

Closed: Came down on F18221, W18229, and F18235. Changed to L18233 north of W18229, and L18234 south of this well.

Matrix: F18216 is plaster/white ash material with flecks of charcoal. The matrix below is reddish pebbly mudbrick debris and sterile beach sand. There were probably resurfacing materials. F18221 is also white ash floor with flecks of charcoal.

Relations: Above: L18216 seals [L18221] lower of 2 human (5-6) replacements
 North: [L18221] reaches W9262. It covers F18233 and F18235 but also
 South: [L18221] continues south into L18215. It covers and seals
 East: [L18221] continues under installation L9982 and into L18217.
 West: [L18221] reaches W18048. It continues east of L18217 and south of L18215. F18221 seals L18233 below.

[F18221] reaches W18229 south, and continues north under W9262, west under W18048, and east as the bottom subfloor of F18058 (L18217)

Installation L9982 floats above the level of [F18221]

Additional Photo: #166410

Additional Observations/Value: high value. Material below earliest phase of destruction floor.

Locus

L 18221

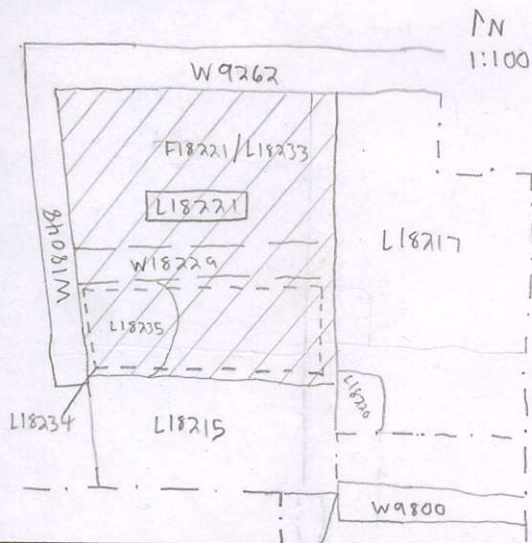


166409



166410

Sketch plan



Photo

Photo

Section

Section

