

Locus W 18224	Dor 1917	Fld G <sub>1</sub>	Sq A.I.32	Loc. type Installation Bin. (See L9805)
Open Date 14/07/97	High at 12.8.9 M <sub>1</sub>	Low at 12.6.2 S <sub>1</sub>	Seals: 18220	Sealed by:
Close Date 15/07/97	12.6.11 M <sub>1</sub>	12.5.4 S <sub>1</sub>	Loci	
Floor: type	Length 0.8	Width 0.8	Vol	above
Value	Remove 15/07/97	Drawn? YES	below	
Photo #(1)	Photo #(2)	Loci 18220		
Written by: J.C.M.	Checked by: J.R.Z.	below		

Unit	Phase	Stage	Stratum	PoM
------	-------	-------	---------	-----

Summary

Opened: see L9805. Bin wall and contents labeled as same locus. We retroactively gave the bin wall wall number 18224.

Limits (N) See L9805 for 917 limits  
 (S)  
 (E)  
 (W)

Closed: Removed and went below.

Matrix: See L9805.

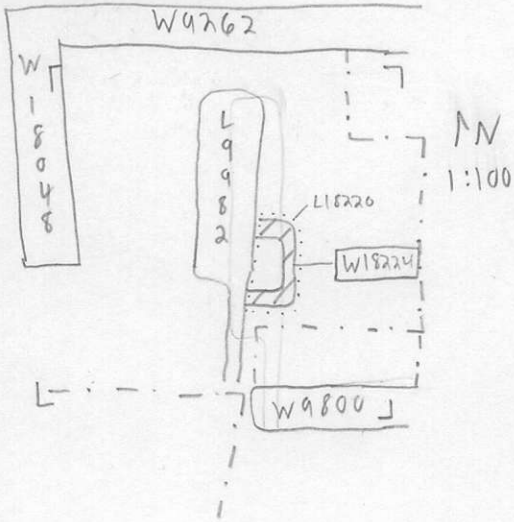
Relations: See L9805  
 Below: W18224 covers and along with F9805, seals L18220.

For Photos see L9805 card  
 Additional Observations/Value: High Value.

Locus

W 1,8,22,4

Sketch plan



Photo

Photo

Section

Section