

Locus L 18234	Dor 1917	Fld 61	Sq 1E32	Loc. type Fill to Floor
Open Date 16/07/17	High at 12.60 E	Low at 12.56 W	Seals: _____	
Close Date 31/07/17	12.17 N	12.04 SW	Sealed by: _____	
Floor: type ce	12.17 N	12.04 SW	Loci 18221 18235	
Length 3.5	Width 1.5	Vol _____	above _____	
Value N	Remove ___/___/___	Drawn? Yes	Loci 18289	
Photo #(1) see 18244	Photo #(2) _____		below _____	
Written by: JFM	Checked by: JRZ			

Unit _____	Phase _____	Stage _____	Stratum _____	PoM _____
------------	-------------	-------------	---------------	-----------

Summary _____

Opened: While excavating 18221, came down on 18229, and a floor reached it from the south. The floor material became Phantom 18235, and material below 18221

Limits (N) 18229
 (S) 18269
 (E) 18244
 (W) 18048

Closed: Came down on 18234 = 18244. Collapsed with 18244 and 18269 into 18289.

Matrix: Mix of loose sandy tan material, and hard packed underbrick debris.

Relations: Above: 18235 and 18221 cover but do not seal 18234
 North: 18234 reaches 18229.
 South: 18234 continues into 18269.
 East: 18234 continues into 18244.
 West: 18234 reaches 18048.
 Below: 18234 comes down on 18234, which seals 18289.

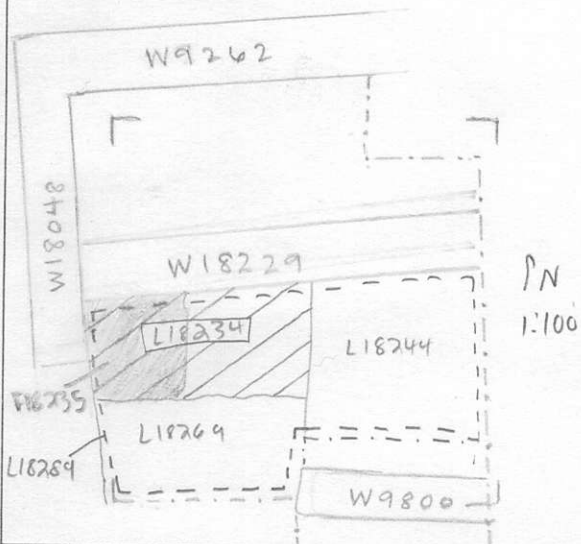
18234 reaches 18229 and 18048, and continues into 18244 and 18269
 probably under it?

Additional Observations/Value: High Value.

Locus

L 1,8,2,3,4

Sketch plan



Photo

Photo

Section

Section