

Focus 18235	Dor 1917	Fld G	Sq A133	Loc. type Floor Surface
Open Date 16/07/17	High at 12.56 N.E	Low at 12.50 S.W	Seals: _____	
Close Date 16/07/17	High at 12.56 N.E	Low at 12.50 S.W	Sealed by: _____	
Floor: type GP	High at 12.56 N.E	Low at 12.50 S.W	Loci 18221 _____	
Length 1.5	Width 3.5	Vol _____	above _____	
Value 11	Remove 16/07/17	Drawn? _____	Loci 18234 _____	
Photo #(1) 166435	Photo #(2) 166436		below _____	
Written by: JCM	Checked by: JRZ			

Unit _____	Phase _____	Stage _____	Stratum _____	PoM _____
------------	-------------	-------------	---------------	-----------

Summary _____

Opened: While excavating L18221, came down on floor both north and south of W18229.

The floor to the north became F18221, and the surface south became Phantom L18235

Limits (N) W18229

(S) F18216

(E) L18234

(W) W18048 and north of L18215

Closed: Entire area south of W18229 excavated as L18234

Matrix: white arhy material.

Relations: Above: L18221 covers but does not seal F18235

North: F18235 reaches W18229.

South: F18235 continues as a lower surface of F18016

East: F18235 slopes up to reach the eastern part of L18234 *

West: F18235 reaches W18048.

Below: F18235 covers L18234 but does not seal it.

* F18235 slopes westward dramatically and so covers the western part of L18234 at an angle.

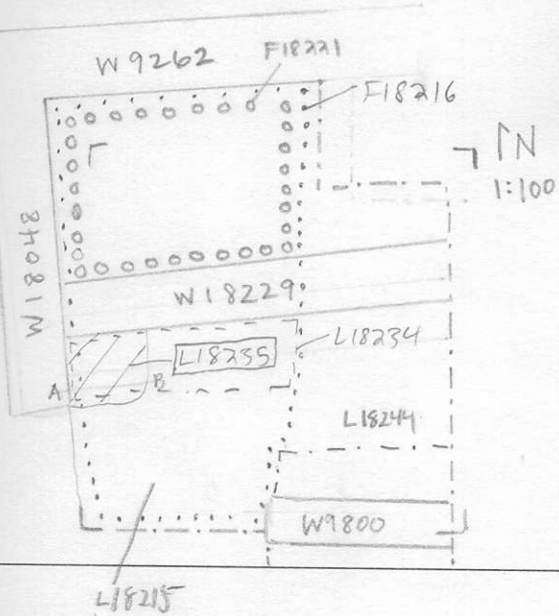
Additional Photos: 166437

Additional Observations/Value: Low Value. Opened for stratigraphic neatness.

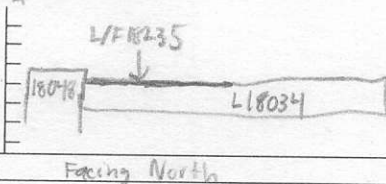
LOCUS

LJ 18235

Sketch plan



Section



Section

