

Locus L 18240	Dor 1917	Fld 6	Sq A532	Loc. type Pit or leveling surface
Open 17/17/17	High 12.64	at NE	Low 12.60	at SW
Close 17/17/17	12.63	S	12.57	NW
Floor: type	Length 0.7	Width 9.7	Vol	Drawn?
Value ?d	Remove / /			
Photo # (1)	Photo # (2)			Loci 18231
Written by: JCM	Checked by: JAZ			above
				Loci 18239
				below

Unit	Phase 9	Stage	Stratum	PoM
-------------	----------------	--------------	----------------	------------

Summary

Opened: While excavating L18231, we came down on soil change in the NW corner of the locus. Thought to be a pit, this area was designated L18240

Limits (N) Balk under W900
 (S) L18239
 (E) L18239
 (W) Balk under W9065

Closed: Shortly after we began excavating L18240, we bottomed out on material that was continual across the area. This entire area was changed to L18239.

Matrix: Light grey ashy material and very loose. Differed from the tan sandy material (wash) above in L18231, and the tan sandy harder material in L18239 East, South and below.

Relations: Above: L18231 covers but does not seal L18240.
 North: L18240 continued into the balk under W900.
 South East: If a pit, L18240 cuts L18239. If a leveling surface, L18240 cuts L18239.
 West: L18240 continues into the balk under W9065
 Below: L18240 either cuts or reached L18239 below

L18240 is the same material as L9997. Seasonal erosion obscured this material's limits requiring us to open cleaning L18231.

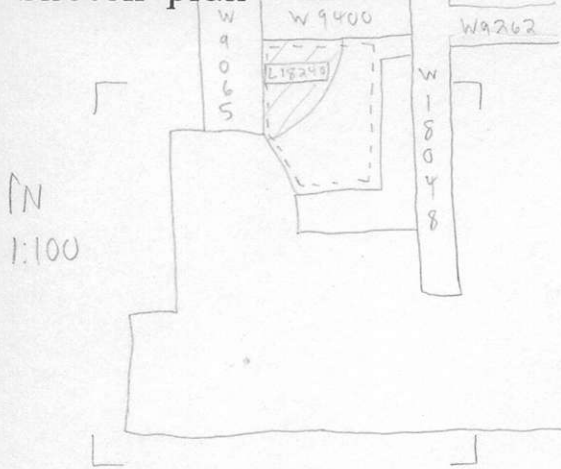
In the section below W9065 + W9400, L18240 + L9997 appear to be part of a large iron age pit. Since this pit was only identified near its bottom it likely contaminates all adjoining loci. The top preserved part of the pit is preserved in section at -

Additional Observations/Value: Low Value.

Locus

L 18240

Sketch plan



Photo

Photo

Section

Section

