

Focus 18242	Dor 1917	Fld 9	Sq AJ32	Loc. type Destruction Material
Open Date 08/07/97	High at 12.62 NW	Low at 12.51 SE	Seals: _____	Sealed by: _____
Close Date 06/08/97	12.20 N	12.00 S	Locs 9,96,7	above _____
Floor: type ce	12.20 N	12.00 S	below _____	
Length 1.2	Width 2.5	Vol _____		
Value 0.0	Remove -/-/-	Drawn? ___		
Photo #(1) 166724	Photo #(2) 166725			
Written by: JCM	Checked by: JRZ			

Unit _____	Phase 9	Stage _____	Stratum _____	PoM _____
------------	------------	-------------	---------------	-----------

Summary _____

Opened: Beginning of this season's excavations in this area.

Limits (N) W9909
 (S) Balk
 (E) W18048, L18214
 (W) W18250, L18293

Closed: Came down on F18242, No loci below, end of season reached

Matrix: Mixture of loose sandy material and mudbrick debris. Some burnt brick and charcoal in the eastern edge near L18214. Also layers of silty sand and mud covered some of the pottery in the North-West corner, indicating the room may have been left abandoned for some time after destruction.*

Relations: Above: L9967 continues down as L18242 and does not seal it
 North: L18242 reaches W9909. (stone socle)
 South: L18242 continues into the balk.
 East: L18242 reaches W18048* on the north, and continues into L18214 on the south. *(stone socle)
 West: L18242 reaches W18250 on the south, and continues into L18293 on the north.
 Below: L18242 comes down on F18242. No loci below.

F18242 is covered in veritable vessels, on the north and south, there is evidence to suggest the pottery may have sat on some kind of low mudbrick benches, but the material was too eroded to positively identify. Many of these vessels were upside down, suggesting they may have fallen from above.

Destruction Material from L18214 was spilling into the room of L18242 indicating that this room is part of the destruction level.

* Also find the head sized rubble littered the East side of the room. Most likely, this is rubble fall from W18048. Additional photos: 166726-166728

Additional Observations/Value: High value, Destruction Material



166890R



166893



166960



166955



167637



167634



166957



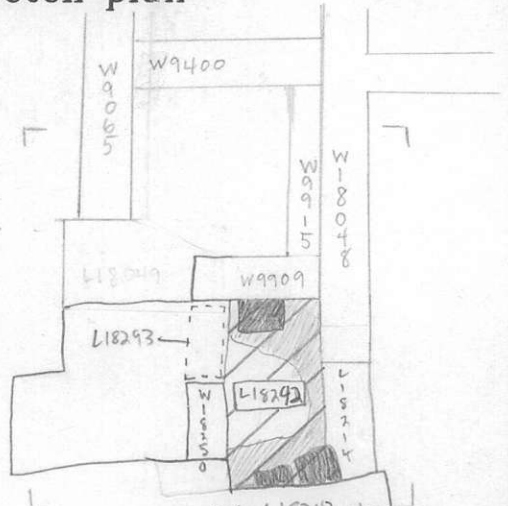
166961



167641

Locus
L 18249

Sketch plan



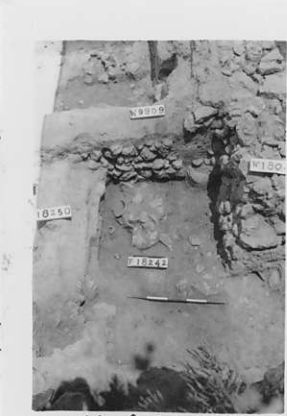
N 1:100
/// - L18242 above
F18242 below
--- - L18293
//// - restorable pottery vessels
- - - - - mudbricks



166724



166725



166727



166726



166728