

Locus <u>L18254</u>	Dor <u>1917</u>	Fld <u>G<sub>1</sub></u>	Sq <u>A13.1</u>	Loc. type <u>Destruction Layer</u>
Open <u>22/07/97</u>	Date	High at <u>12.84</u>	Low at <u>12.78</u>	Seals: <u>    </u> <u>    </u> <u>    </u> <u>    </u>
Close <u>25/07/97</u>		<u>12.67</u>	<u>12.65</u>	Sealed by: <u>    </u> <u>    </u> <u>    </u> <u>    </u>
Floor: type <u>    </u>				Loci <u>18025</u> <u>    </u> <u>    </u> <u>    </u>
Length <u>2.0</u>	Width <u>0.8</u>	Vol <u>    </u>	Drawn? <u>No</u>	above <u>    </u> <u>    </u> <u>    </u> <u>    </u>
Value <u>14</u>	Remove <u>    </u> / <u>    </u> / <u>    </u>			Loci <u>18265</u> <u>    </u> <u>    </u> <u>    </u>
Photo #(1) <u>    </u>	Photo #(2) <u>    </u>			below <u>    </u> <u>    </u> <u>    </u> <u>    </u>
Written by: <u>    </u>	Checked by: <u>JRZ</u>			

Unit <u>    </u>	Phase <u>    </u>	Stage <u>    </u>	Stratum <u>    </u>	PoM <u>    </u>
------------------	-------------------	-------------------	---------------------	-----------------

Summary     

Opened: Beginning of excavations this season in this area

Limits (N) L18033

(S) Dalk under W9715

(E) Balk

(W) L18262, L18261

Closed: Collapsed with L18262 into L18265.

Matrix: medium/dark brown with large chunks of charcoal which were probably burned beams. Some red burned brick inclusions.

Relations: Above: L18025 covers but does not seal L18254.

North: L18254 continues into L18033.

South: L18254 continues into a temporary built left to help support W9715

East: L18254 continues into the balk.

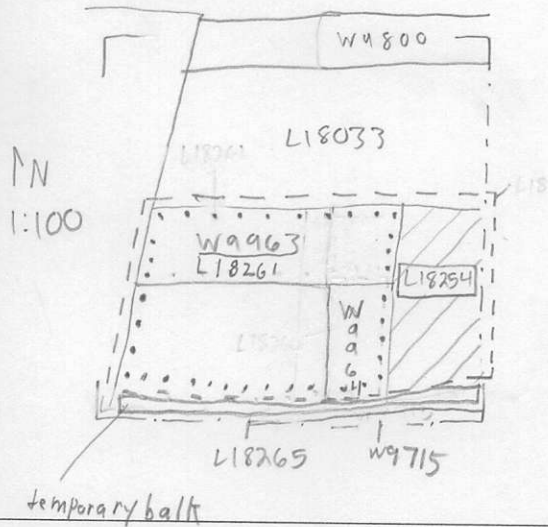
West: L18254 continues into L18262 and L18261

Below: L18254 continues down as L18265.

Additional Observations/Value: High Value. Destruction Material

Locus  
L 18254

Sketch plan



Photo

Photo

Section

Section

L 18262 is immediately below, and is the same dimensions as, W9964